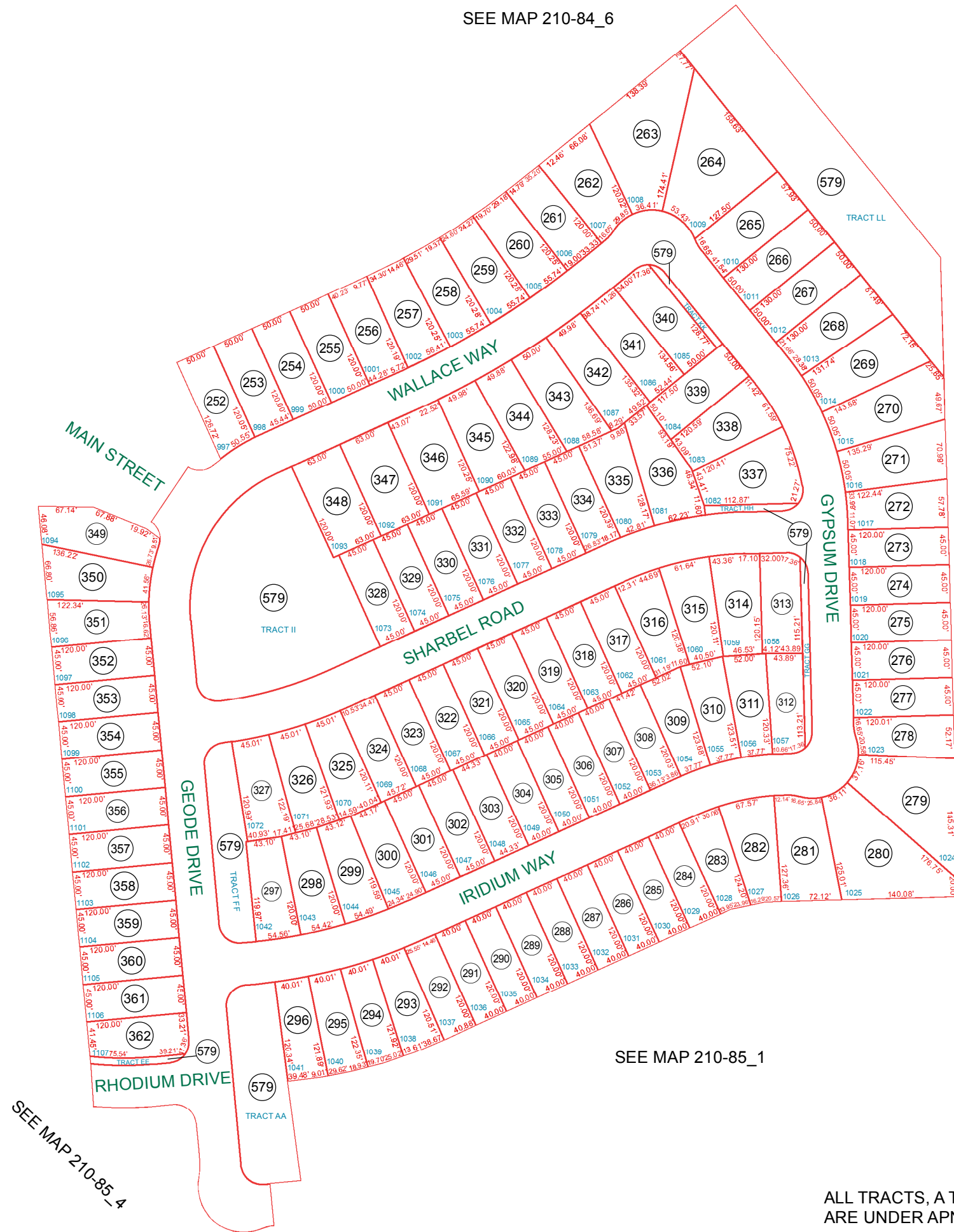


SEE MAP 210-84\_6



SEE MAP 210-85\_1

SEE MAP 210-84\_7

SEE MAP 210-85\_4

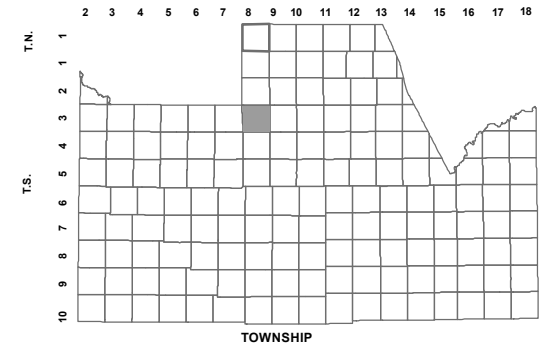
ALL TRACTS, A THROUGH M, Y & AA THROUGH LL ARE UNDER APN: 210-85-579

BOOK - MAP

# 210-85\_3

SE SEC. 27 T.03S. R.08E.  
THE VILLAGE AT COPPER BASIN  
UNIT 5C-1: 2017-019532

LOCATION MAPS  
R.E.



HASH KNIFE DRAW RD		SCHNEPP RD			
6	5	4	3	2	1
SKYLINE DR		GALZARDO			
7	8	9	10	11	12
ROBERTS RD		BELLAVISTARD		QUAIL RUN LN	
18	17	16	15	14	13
GARY RD		JUDD RD			
19	20	21	22	23	24
HUNTPARK		MAGMA RD		ATTAWAY RD	
30	29	28	26	25	
31		34		36	
		ARIZONA FARMS RD			



Revised: 11/30/2017

By: DW



**PINAL COUNTY**  
WIDE OPEN OPPORTUNITY

**Pinal County Assessor**

THIS MAP DOES NOT REPRESENT A SURVEY. NO LIABILITY IS ASSUMED FOR THE ACCURACY OF THE DATA DELINEATED HEREIN, EITHER EXPRESSED OR IMPLIED BY PINAL COUNTY OR ITS EMPLOYEES. THIS MAP IS COMPILED FROM OFFICIAL RECORDS, INCLUDING PLATS, SURVEYS, RECORDED DEEDS AND CONTRACTS, AND ONLY CONTAINS INFORMATION REQUIRED FOR THE PINAL COUNTY ASSESSOR'S OFFICE PURPOSES.