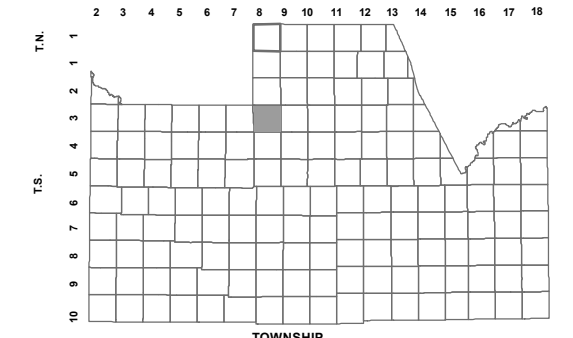


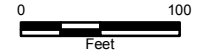
210-85_4

SE SEC. 27 T.03S. R.08E.
THE VILLAGE AT COPPER BASIN
UNIT 5C-1: 2017-019532

LOCATION MAPS
R.E.



HASH KNIFE DRAW RD		SCHNEPP RD		1	
6	5	4	3	2	1
SKYLINE DR		CANTON RD		12	
7	8	9	10	11	12
ROBERTS RD		SIERRA VISTARD		13	
18	17	16	15	14	13
GARY RD		BELLA VISTARD		24	
19	20	21	22	23	24
30		JUDD RD		25	
30	29	28	27	26	25
31		MAGMA RD		36	
31	32	33	34	35	36
		ARIZONA FARMS RD			



Revised: 12/4/2017

By: DW



PINAL COUNTY
WIDE OPEN OPPORTUNITY

Pinal County Assessor

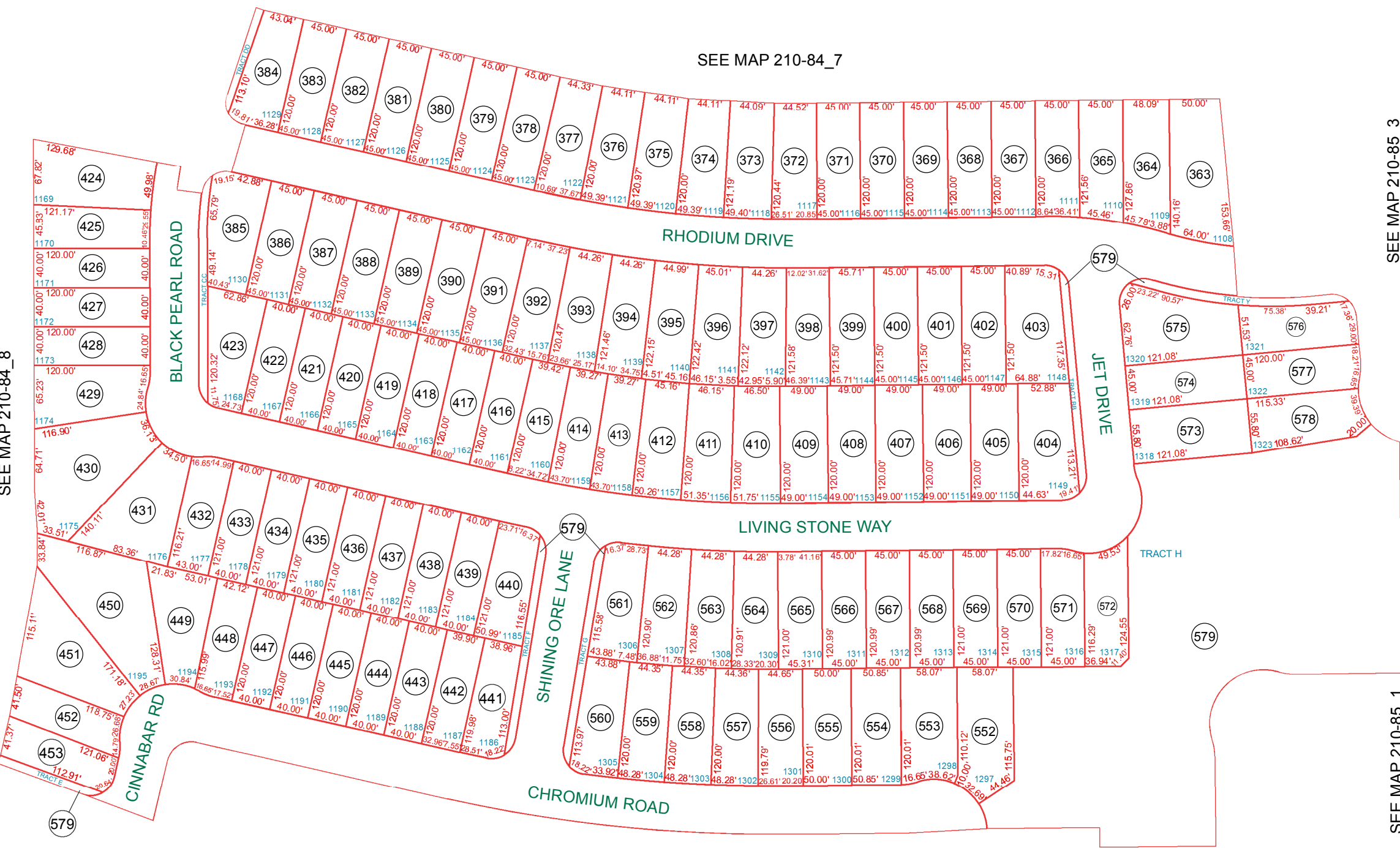
THIS MAP DOES NOT REPRESENT A SURVEY. NO LIABILITY IS ASSUMED FOR THE ACCURACY OF THE DATA DELINEATED HEREIN, EITHER EXPRESSED OR IMPLIED BY PINAL COUNTY OR ITS EMPLOYEES. THIS MAP IS COMPILED FROM OFFICIAL RECORDS, INCLUDING PLATS, SURVEYS, RECORDED DEEDS AND CONTRACTS, AND ONLY CONTAINS INFORMATION REQUIRED FOR THE PINAL COUNTY ASSESSOR'S OFFICE PURPOSES.

SEE MAP 210-84_7

SEE MAP 210-85_3

SEE MAP 210-85_1

SEE MAP 210-84_8



SEE MAP 210-85_5

ALL TRACTS, A THROUGH M, Y & AA THROUGH LL
ARE UNDER APN: 210-85-579