

SEC. 30 TN.5S RG.8E

SEE MAP 209-19
E KENILWORTH RD

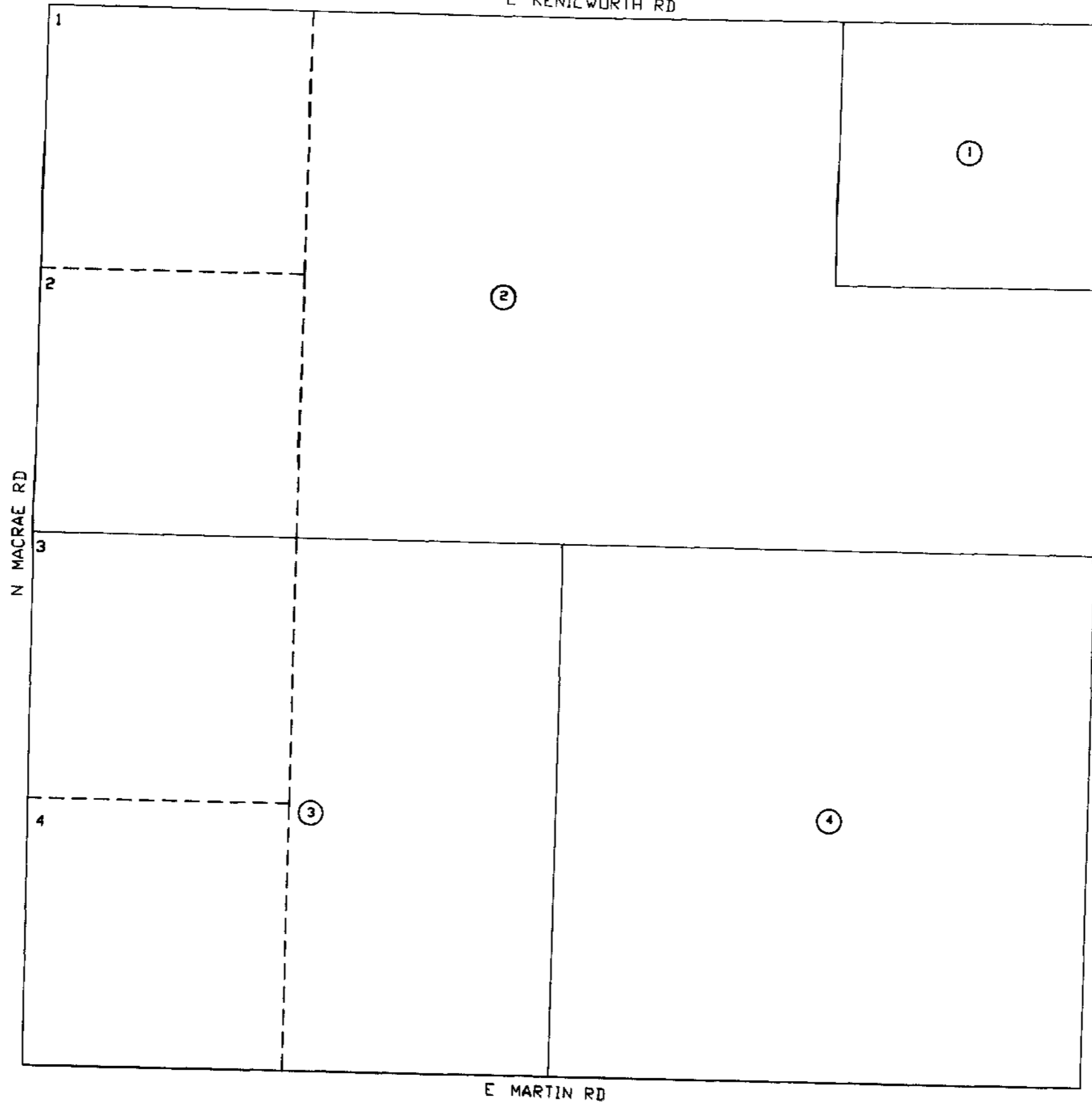
209-28

AREA CODE
2103
2114

SPECIAL DISTRICTS
12662
16608

THIS MAP IS FOR TAX PURPOSES ONLY
THIS OFFICE WILL NOT ASSUME LIABILITY FOR
REPRESENTATION, MEASUREMENTS OR ACREAGE.

SEE BOOK 509



SEE MAP 209-25

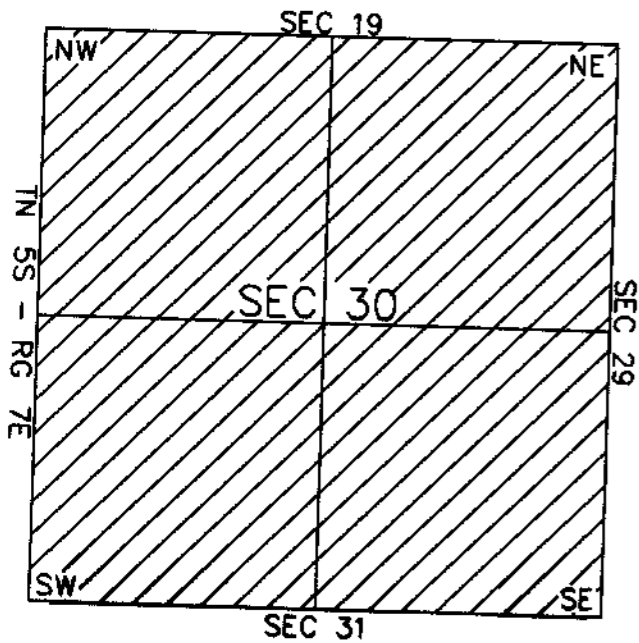
THE ORIGINAL PLAT OF THIS SUBDIVISION IS
ON FILE WITH THE PINAL COUNTY RECORDERS
OFFICE, FOR COMPLETE INFORMATION OF PLAT
AND CC&R'S CALL (520) 868-7100.



SCALE: 1" = 600'

09-03-2001

VICINITY MAP



SEE MAP 209-29

PINAL COUNTY ASSESSORS MAP