

# SEC. 36 TN.5S RG.10E

SEE MAP 206-01

# 206-26

AREA CODE  
0000

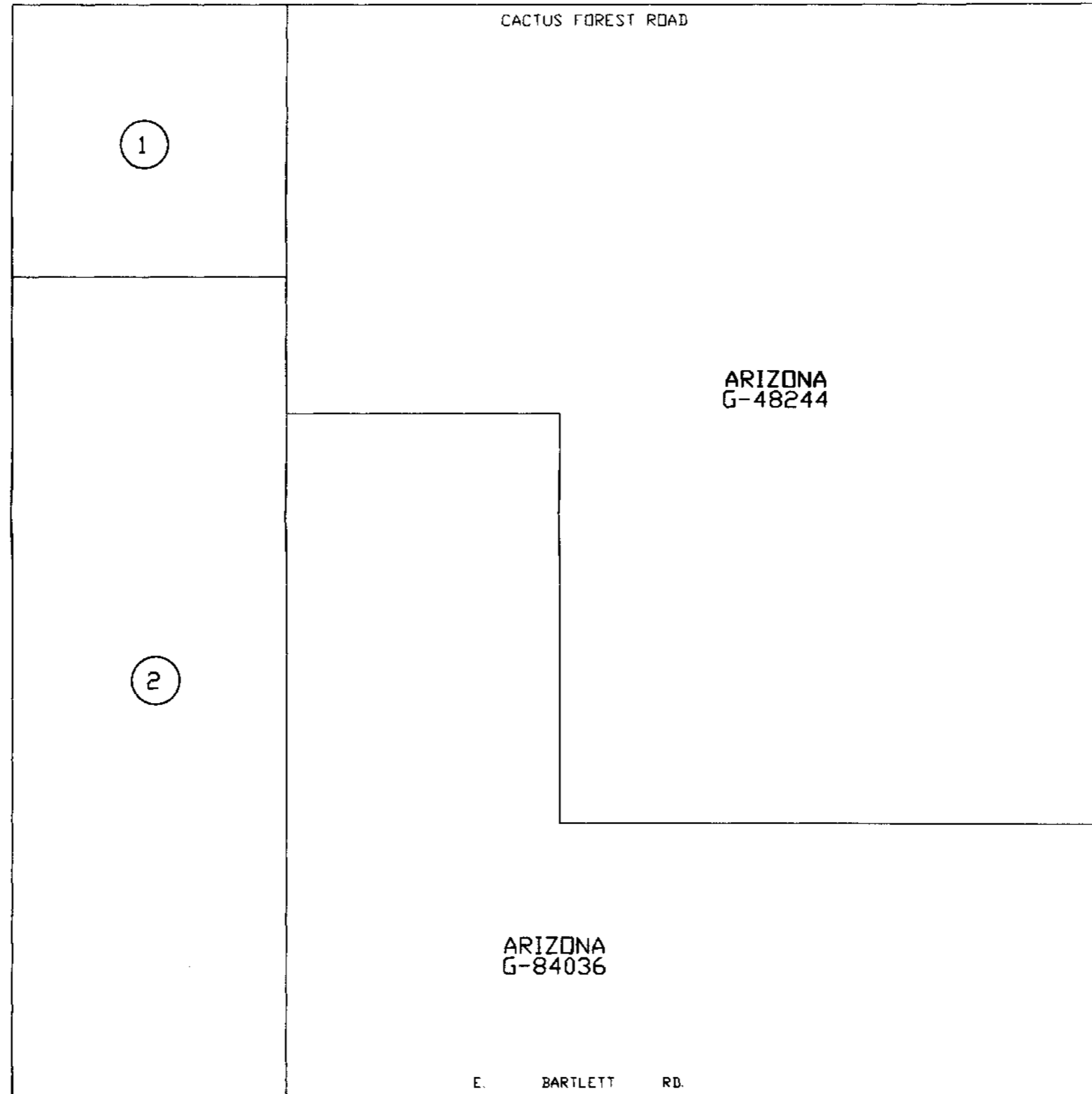
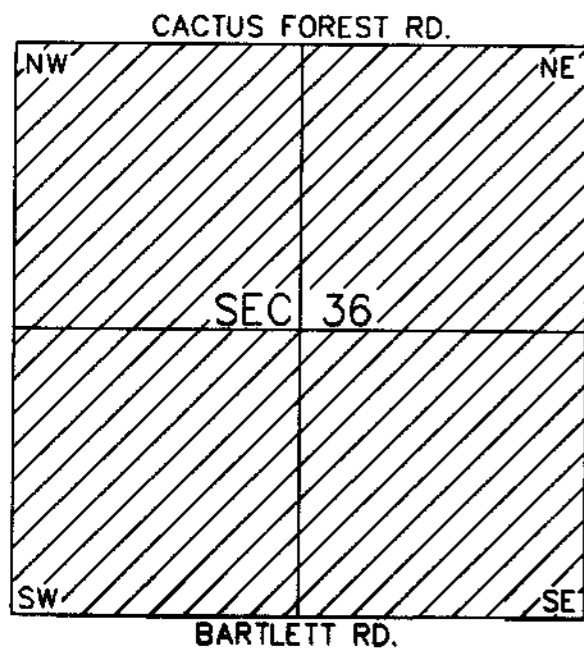
SPECIAL DISTRICTS  
00000  
00000

THIS MAP IS FOR TAX PURPOSES ONLY.

THIS OFFICE WILL NOT ASSUME LIABILITY FOR  
REPRESENTATION, MEASUREMENTS OR ACREAGE.

SEE MAP 206-25

## VICINITY MAP



SEE MAP 400-05

THE ORIGINAL PLAT OF THIS SUBMISSION IS  
ON FILE WITH THE PINAL COUNTY RECORDERS  
OFFICE, FOR COMPLETE INFORMATION OF PLAT  
AND CC&R'S CALL (520) 868-7100.

SEE MAP 206-27



SCALE: 1" = 600'

08-10-2001