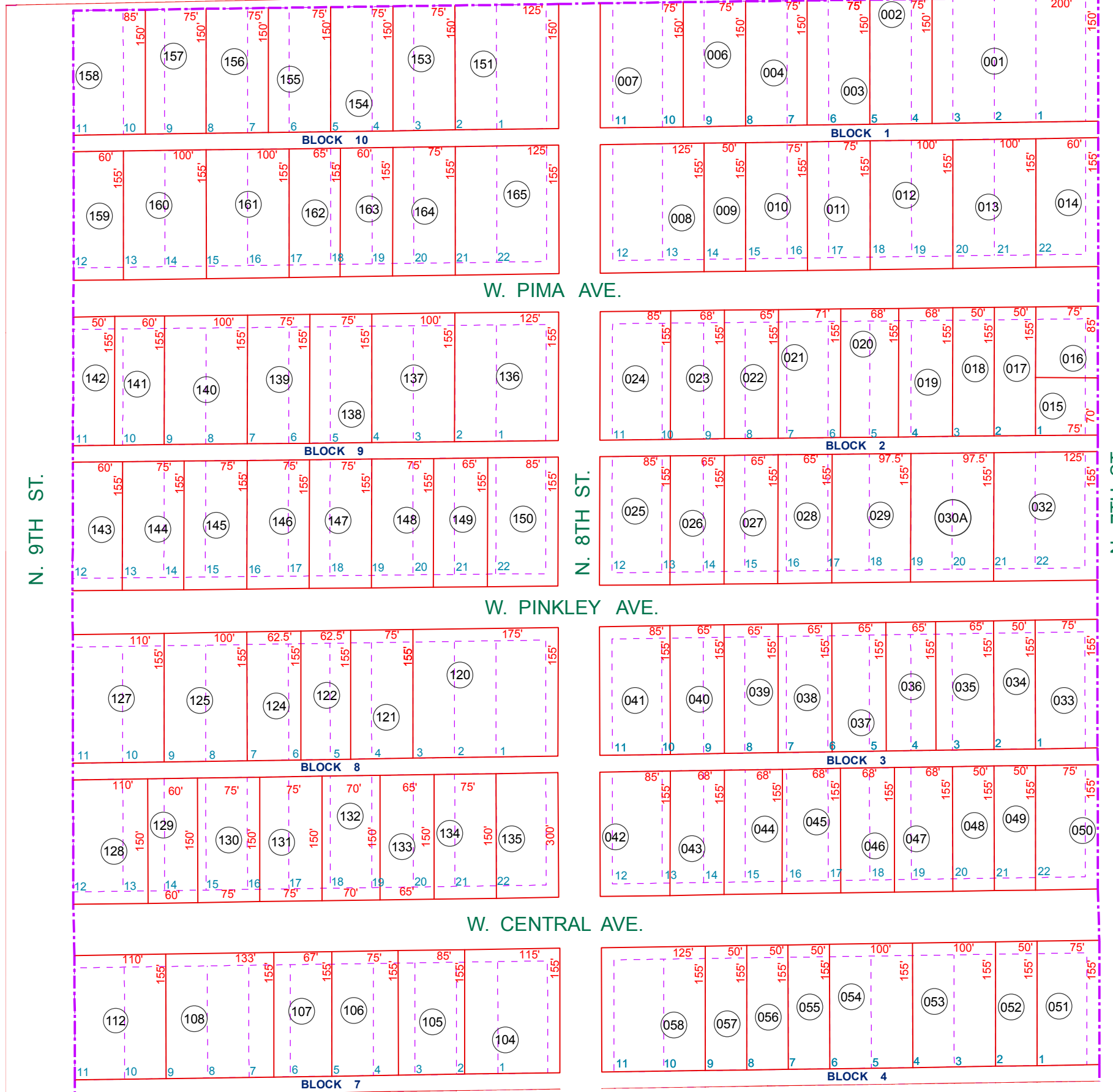


SEE MAP 204-05
W. NORTHERN AVE.



SEE MAP 204-05

N. 9TH ST.

N. 8TH ST.

N. 7TH ST.

SEE MAP 204-08_1

SEE MAP 204-09_2

BOOK - MAP

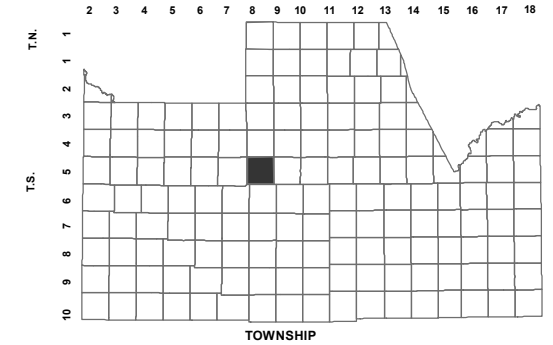
204-09_1

W2 SE SEC. 21 T.05S. R.08E.

HOGUE ADDITION

BK. 5 - PG. 33

LOCATION MAPS
R.E.



6	5	4	3	2	1
7	8	9	10	11	12
18	17	16	15	14	13
19	20	21	22	23	24
30	29	28	27	26	25
31	32	33	34	35	36

SECTION



Revised: 6/6/2012

By: **TH**



PINAL COUNTY
wide open opportunity

Pinal County Assessor

THIS MAP DOES NOT REPRESENT A SURVEY. NO LIABILITY IS ASSUMED FOR THE ACCURACY OF THE DATA DELINEATED HEREIN, EITHER EXPRESSED OR IMPLIED BY PINAL COUNTY OR ITS EMPLOYEES. THIS MAP IS COMPILED FROM OFFICIAL RECORDS, INCLUDING PLATS, SURVEYS, RECORDED DEEDS AND CONTRACTS, AND ONLY CONTAINS INFORMATION REQUIRED FOR THE PINAL COUNTY ASSESSOR'S OFFICE PURPOSES.