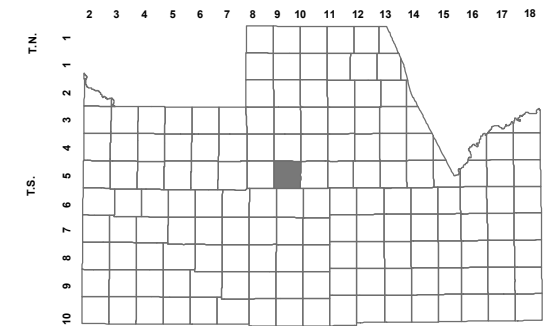


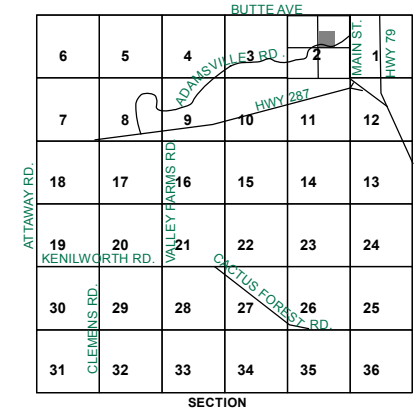
202-09

SEC. 02 T.05S. R.09E.
TURNER ADDITION TO FLORENCE:
BK 16 OF MISC PG 540

LOCATION MAPS
R.E.



TOWNSHIP



SECTION



Revised: 06/27/2017

By: K G

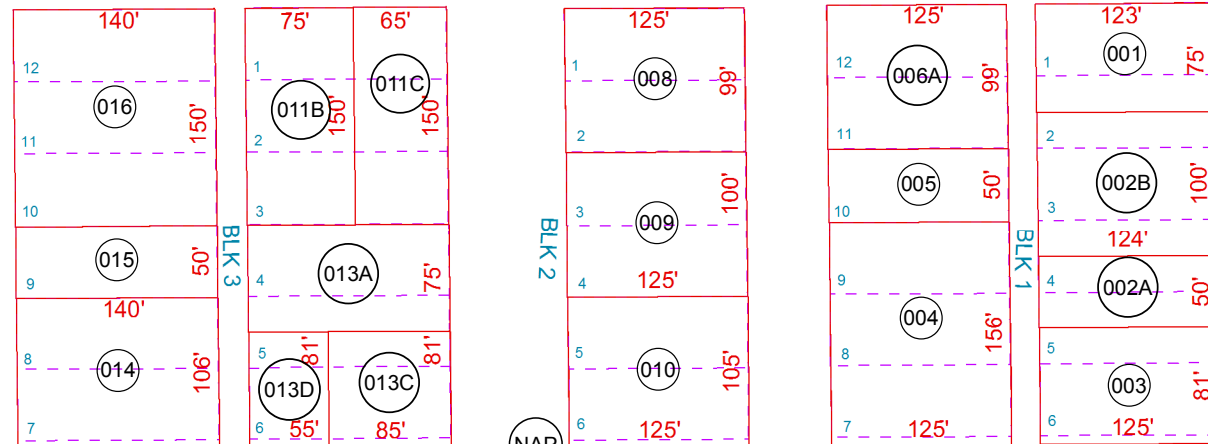


PINAL COUNTY
wide open opportunity

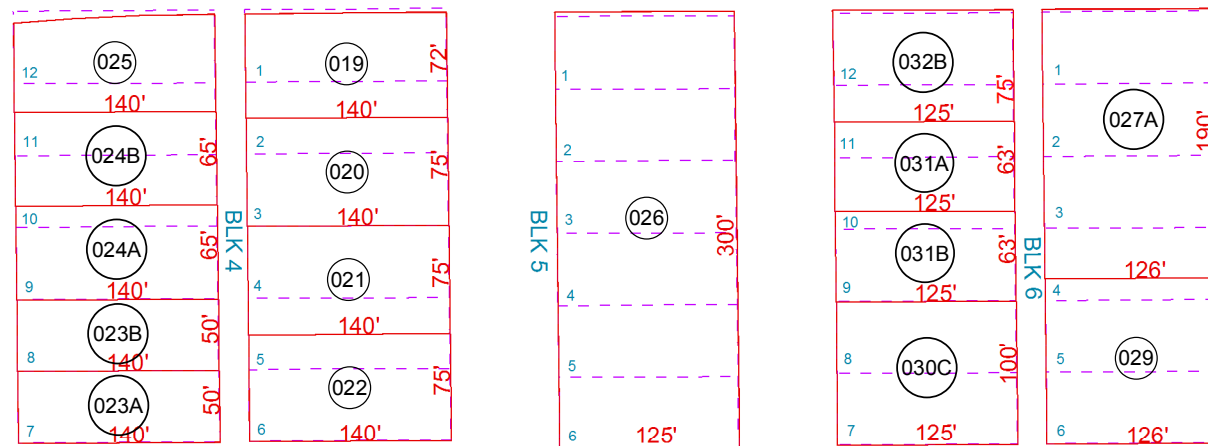
Pinal County Assessor

THIS MAP DOES NOT REPRESENT A SURVEY. NO LIABILITY IS ASSUMED FOR THE ACCURACY OF THE DATA DELINEATED HEREIN, EITHER EXPRESSED OR IMPLIED BY PINAL COUNTY OR ITS EMPLOYEES. THIS MAP IS COMPILED FROM OFFICIAL RECORDS, INCLUDING PLATS, SURVEYS, RECORDED DEEDS AND CONTRACTS, AND ONLY CONTAINS INFORMATION REQUIRED FOR THE PINAL COUNTY ASSESSOR'S OFFICE PURPOSES.

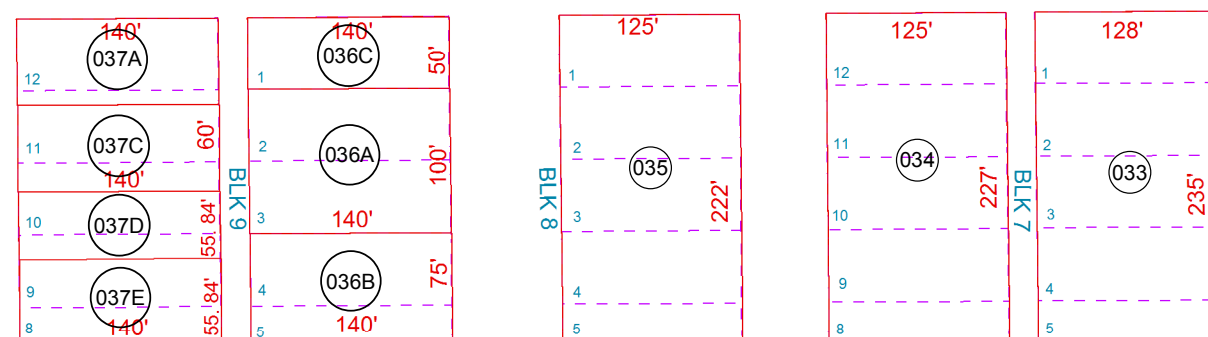
SEE MAP 202-07
20TH ST



21ST ST



22ND ST



SEE MAP 202-05

SEE MAP 202-10

CENTRAL AVE

SEE MAP 202-03_2
MAIN ST

2009-127310 ABND

039

038