

**SEC. 5 TN.05S RG.09E**

SEE BOOK 200

**202-13**

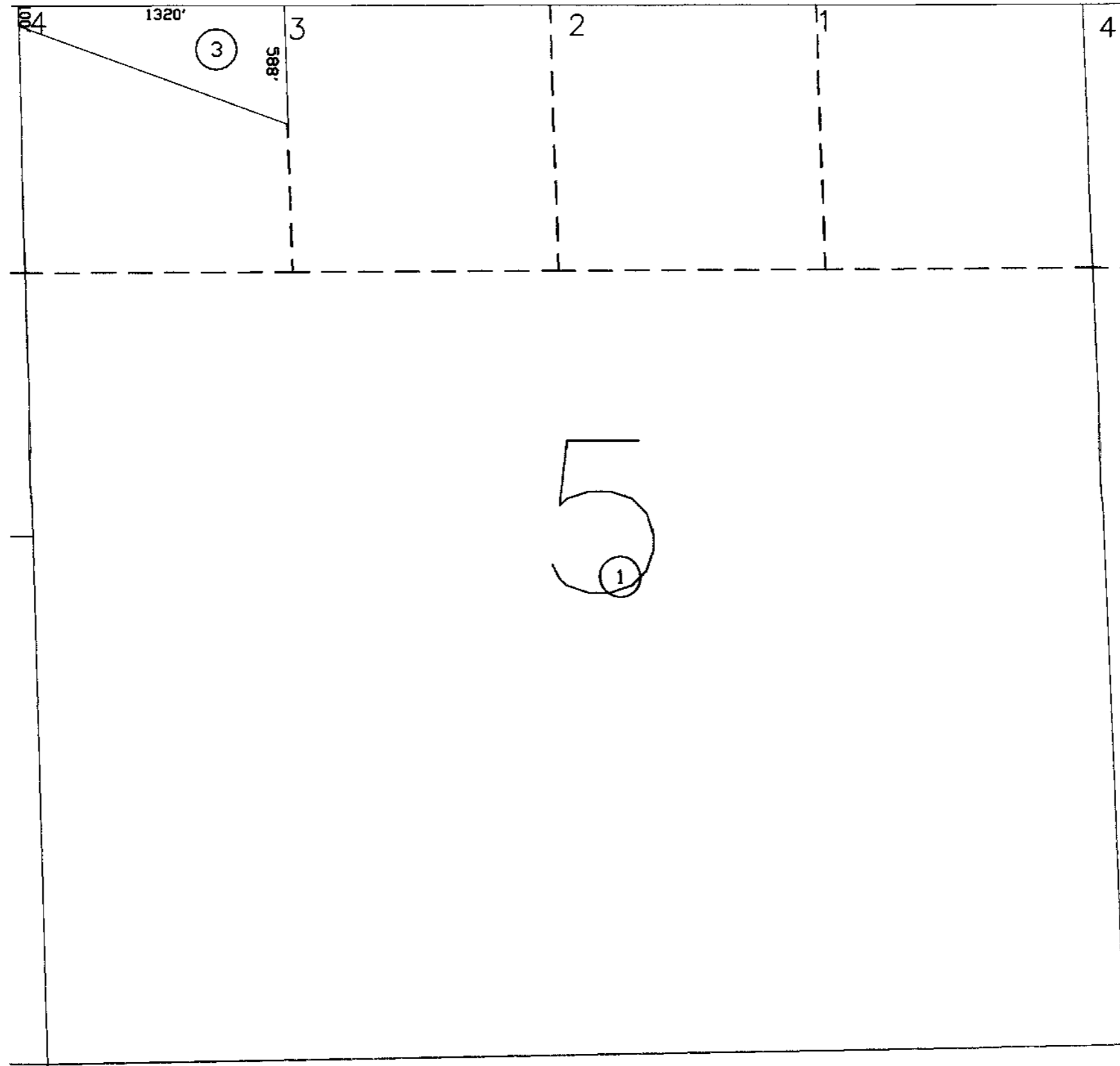
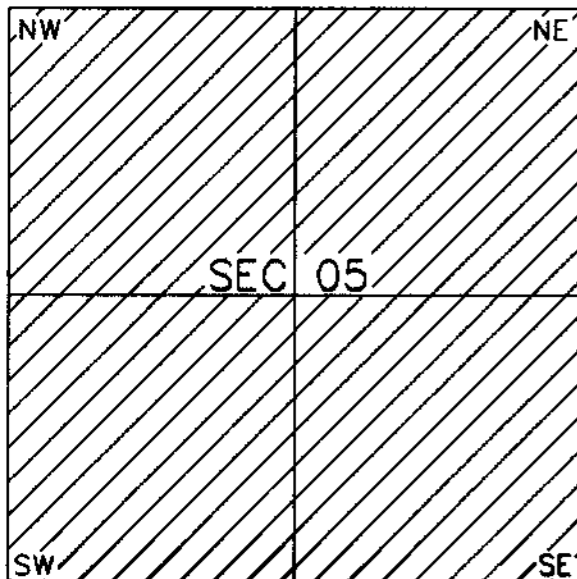
AREA CODE  
0000

SPECIAL DISTRICTS  
00000  
00000

THIS MAP IS FOR TAX PURPOSES ONLY.  
THIS OFFICE WILL NOT ASSUME LIABILITY FOR  
REPRESENTATION, MEASUREMENTS OR ACAGE.

SEE MAP 202-14

**VICINITY MAP**



THE ORIGINAL PLAT OF THIS SUBDIVISION IS  
ON FILE WITH THE PINAL COUNTY RECORDERS  
OFFICE, FOR COMPLETE INFORMATION OF PLAT  
AND CC&R's CALL (520) 866-7100.

SEE MAP 202-12



SCALE: 1" = 600'

07-24-2001

SEE MAP 202-16

**PINAL COUNTY ASSESSORS MAP**