

# SEC. 4 TN.05S RG.09E

SEE BOOK 200

# 202-12

AREA CODE  
0000

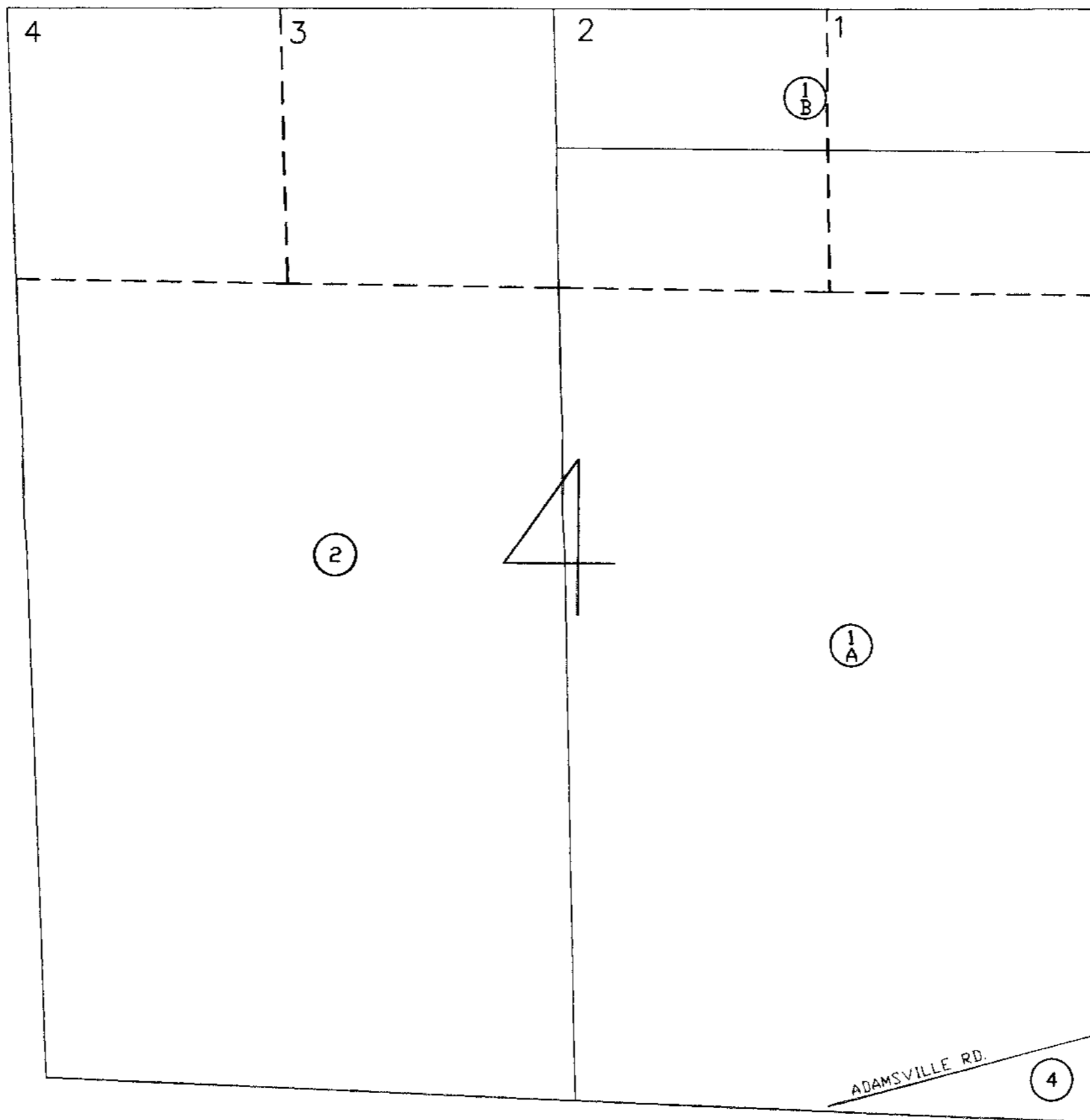
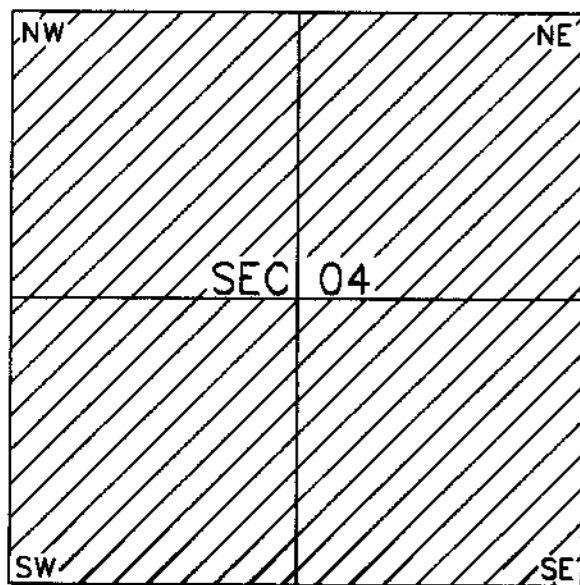
SPECIAL DISTRICTS  
00000  
00000

THIS MAP IS FOR TAX PURPOSES ONLY.

THIS OFFICE WILL NOT ASSUME LIABILITY FOR  
REPRESENTATION, MEASUREMENTS OR ACREAGE.

SEE MAP 202-13

## VICINITY MAP



SEE MAP 202-11

THE ORIGINAL PLAT OF THIS SUBDIVISION IS  
ON FILE WITH THE PINAL COUNTY RECORDERS  
OFFICE, FOR COMPLETE INFORMATION OF PLAT  
AND CCAR'S CALL (520) 868-7100.



SCALE: 1" = 600'

07-24-2001

SEE MAP 202-18

PINAL COUNTY ASSESSORS MAP