

SEC. 15 TN.5S RG.9E

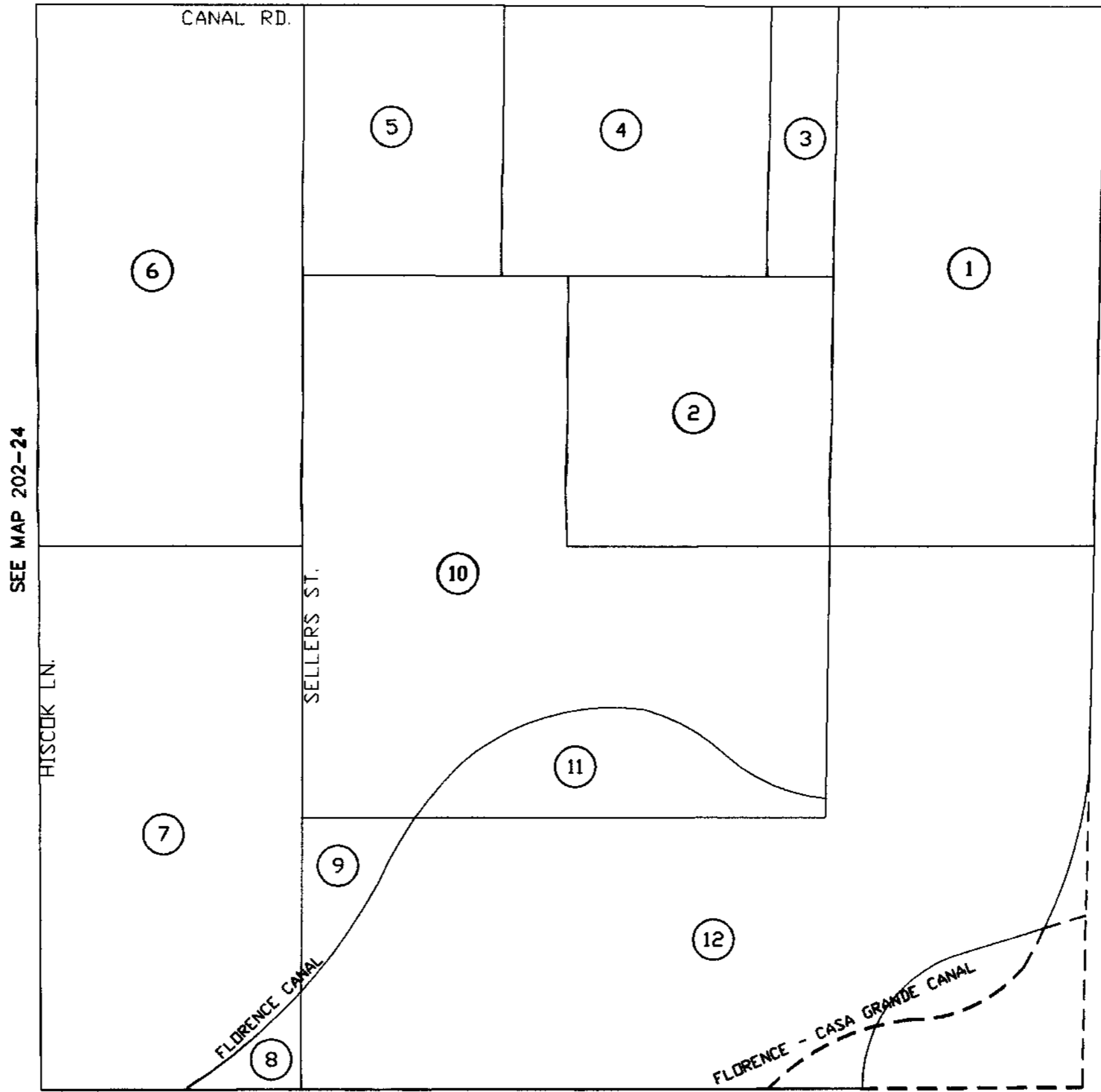
202-23

AREA CODE
0000

SPECIAL DISTRICTS
00000
00000

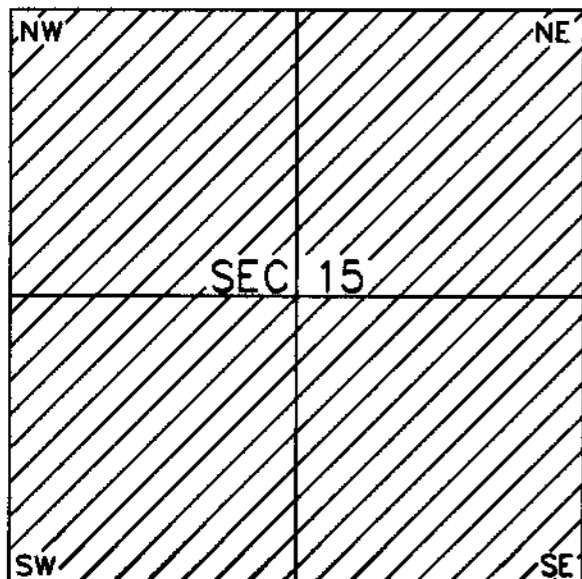
THIS MAP IS FOR TAX PURPOSES ONLY.
THIS OFFICE WILL NOT ASSUME LIABILITY FOR
REPRESENTATION, MEASUREMENTS OR ACRES.

SEE MAP 202-19



THE ORIGINAL PLAT OF THIS SUBDIVISION IS
ON FILE WITH THE PINAL COUNTY RECORDERS
OFFICE, FOR COMPLETE INFORMATION OF PLAT
AND CC&R's CALL (520) 968-7100.

VICINITY MAP



SCALE: 1" = 600'

7-24-2001

SEE MAP 202-31