

# SEC. 29 TN.5S RG.9E

SEE MAP 202-28

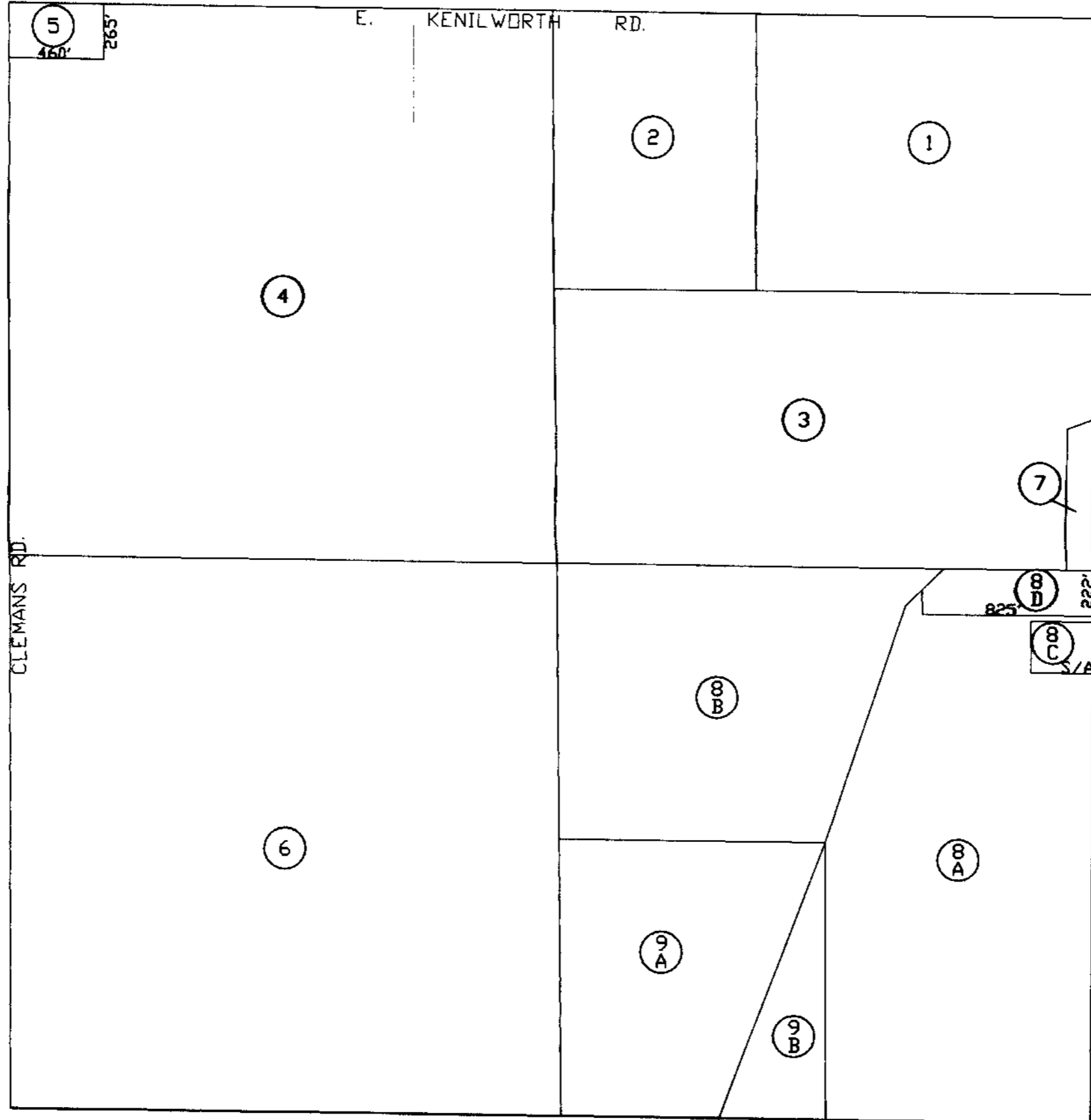
# 202-33

AREA CODE  
0000

SPECIAL DISTRICTS  
00000  
00000

THIS MAP IS FOR TAX PURPOSES ONLY.  
THIS OFFICE WILL NOT ASSUME LIABILITY FOR  
REPRESENTATION, MEASUREMENTS OR ACREAGE.

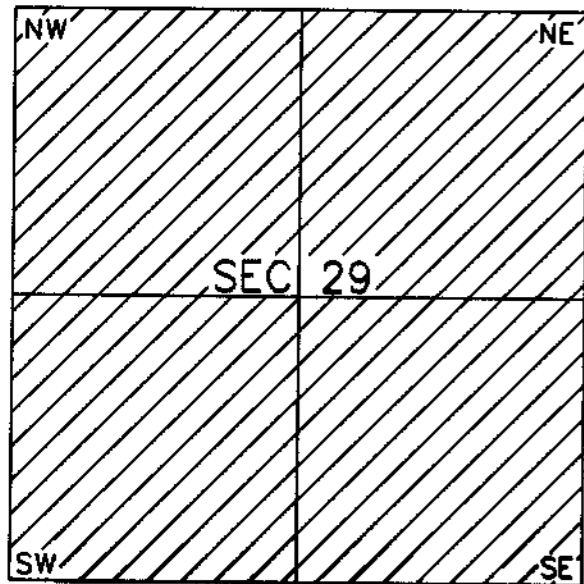
SEE MAP 202-34



SEE MAP 202-32

THE ORIGINAL PLAT OF THIS SUBDIVISION IS  
ON FILE WITH THE PINAL COUNTY RECORDERS  
OFFICE, FOR COMPLETE INFORMATION OF PLAT  
AND CCR's CALL (520) 868-7100.

## VICINITY MAP



SEE MAP 202-36



SCALE: 1" = 600'

07-24-2001