

TRACTS A THRU Y, AND TRACT AA  
ARE UNDER APN 200-03-531A

TRACT Z IS UNDER  
APN 200-03-531B

SEE MAP 200-58

SEE MAP 104-22

SEE MAP 200-24\_1

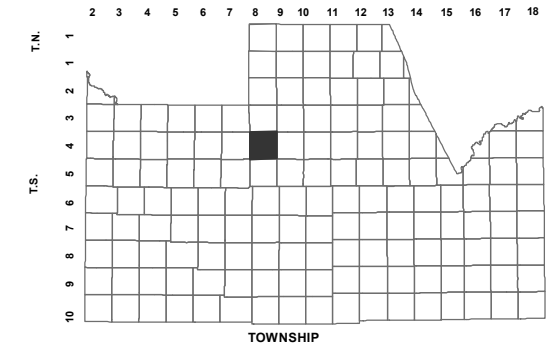
BOOK - MAP

# 200-03\_4

SEC. 2 T.04S. R.08E.

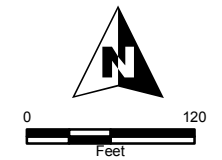
PARCEL G AND PORTIONS OF PARCELS  
K AND F AT MAGIC RANCH  
CAB. F - SLD. 73

LOCATION MAPS  
R.E.



TOWNSHIP

ARIZONA FARMS RD.					
6	5	4	3	2	1
7	8	9	10	11	12
18	17	16	15	14	13
19	20	21	22	23	24
30	29	28	27	26	25
31	32	33	34	35	36
PALMER RD.					



Revised: 5/13/2016

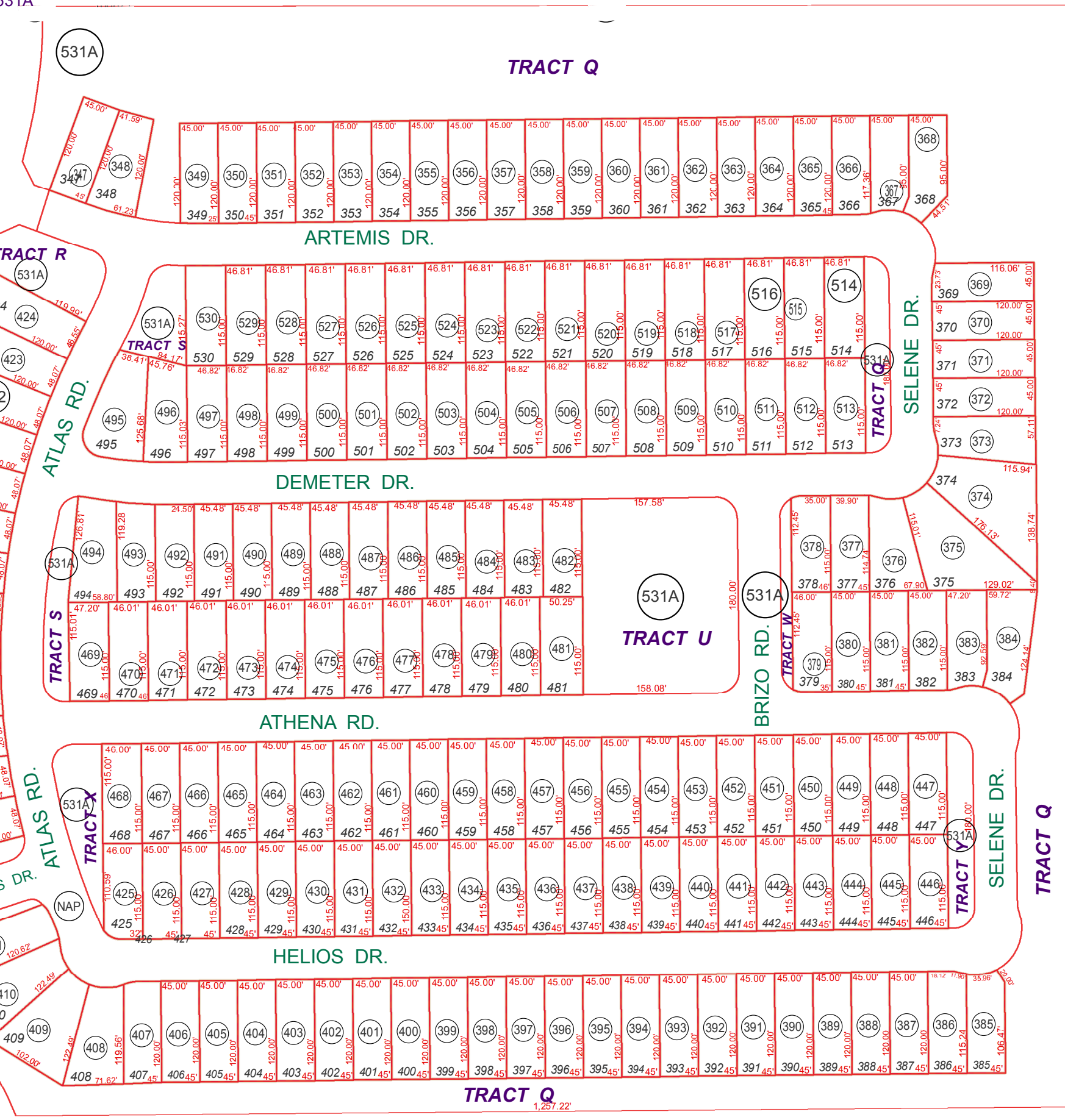
By: **TH**



PINAL COUNTY  
wide open opportunity

Pinal County Assessor

THIS MAP DOES NOT REPRESENT A SURVEY. NO LIABILITY IS ASSUMED FOR THE ACCURACY OF THE DATA DELINEATED HEREIN, EITHER EXPRESSED OR IMPLIED BY PINAL COUNTY OR ITS EMPLOYEES. THIS MAP IS COMPILED FROM OFFICIAL RECORDS, INCLUDING PLATS, SURVEYS, RECORDED DEEDS AND CONTRACTS, AND ONLY CONTAINS INFORMATION REQUIRED FOR THE PINAL COUNTY ASSESSOR'S OFFICE PURPOSES.



SEE MAP 104-22