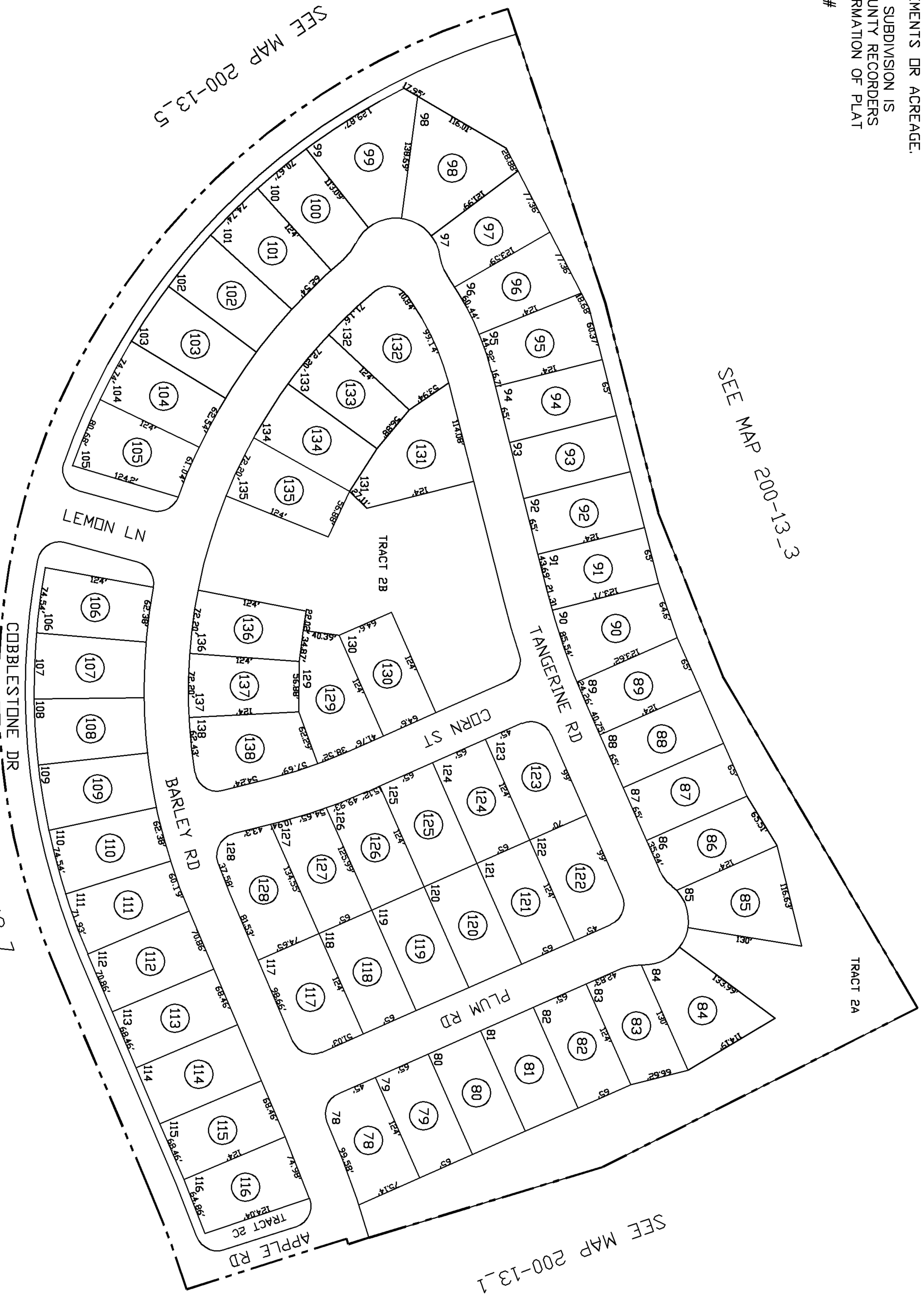


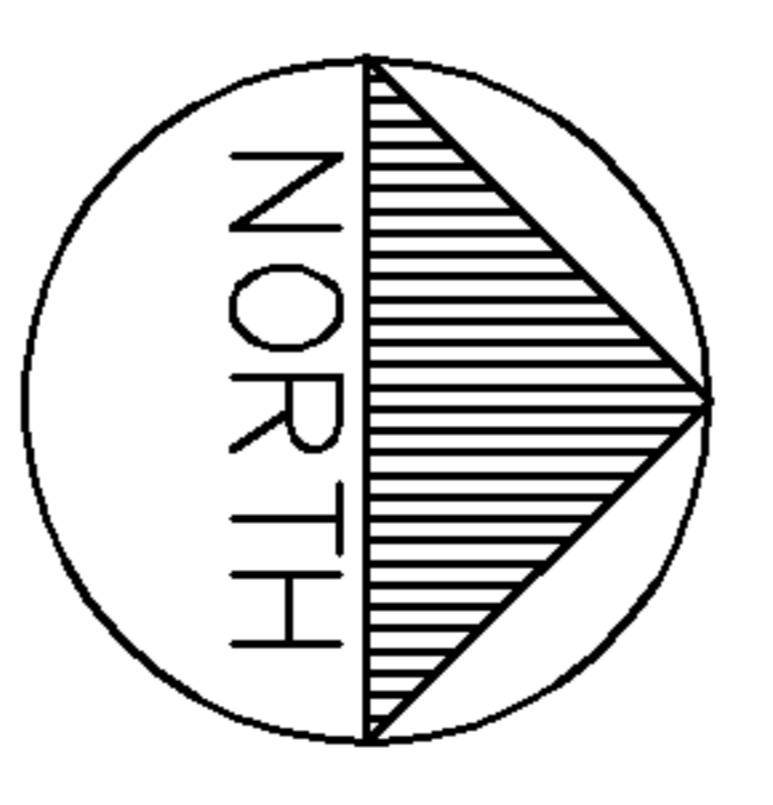
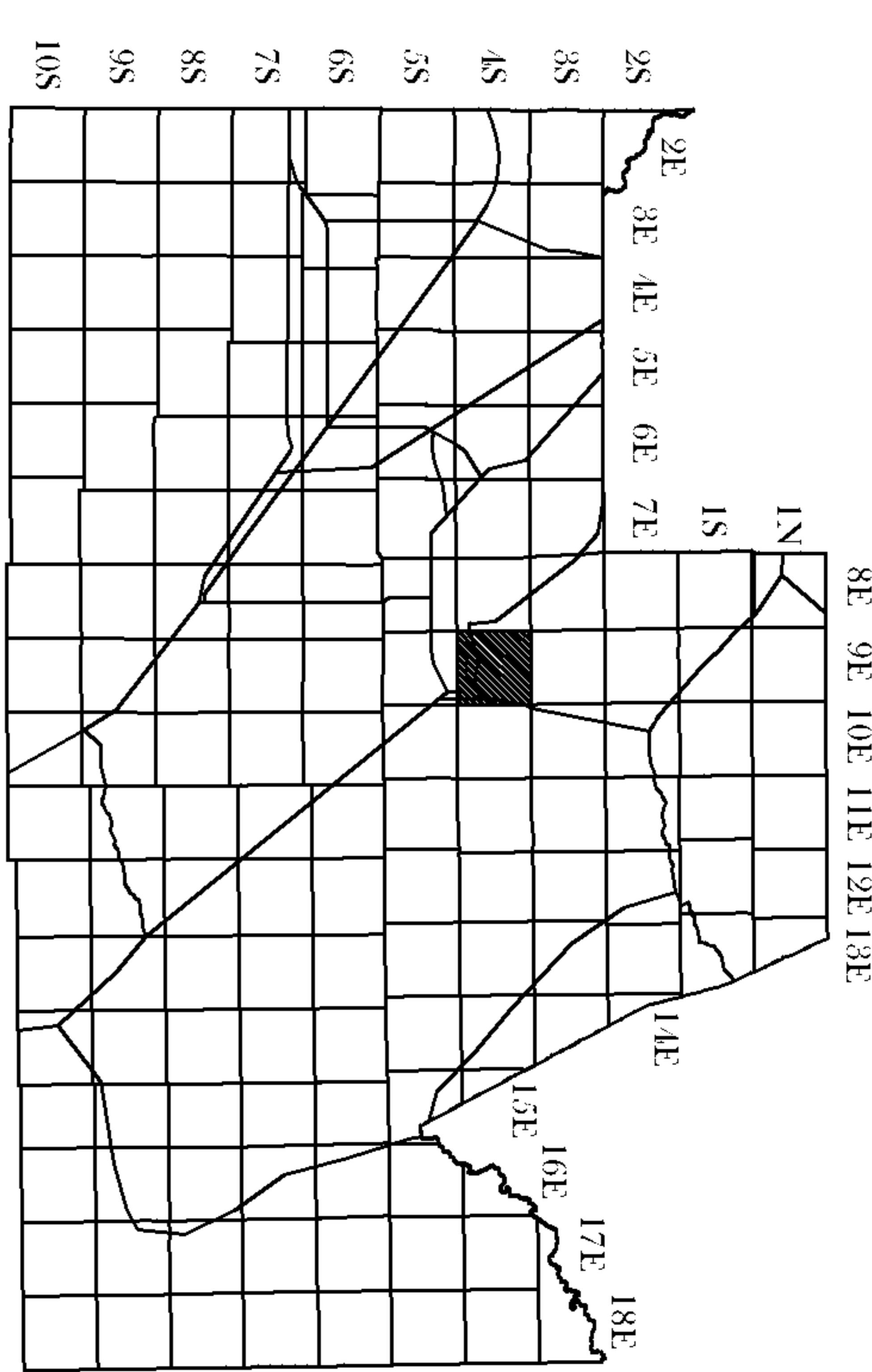
THIS MAP IS FOR TAX PURPOSES ONLY.
 THIS OFFICE WILL NOT ASSUME LIABILITY FOR REPRESENTATION, MEASUREMENTS OR ACREAGE.
 THE ORIGINAL PLAT OF THIS SUBDIVISION IS ON FILE WITH THE PINAL COUNTY RECORDERS OFFICE, FOR COMPLETE INFORMATION OF PLAT CANCELED PARCEL # 200-31-008

CRESTFIELD MANOR AT ARIZONA FARM VILLAGE PARCEL 2

CAB F - SLD 008



CRESTFIELD MANOR AT ARIZONA FARMS VILLAGE TRACTS FOR PARCELS 1 TRHU 7
 1A, 1B, 2A, 2B, 2C, 3A, 3B, 3C, 3D
 3E, 3F, 4A, 4B, 4C, 4D, 5A, 5B, 5C
 5D, 5E, 6A, 6B, 6C, 7A, 7B, 7C, 7D, 7E
 ARE UNDER PARCEL # 200-13-666D



SCALE: 1" = 150'
 9-28-2007
 UPDATED BY: TH

VICINITY MAP

ARIZONA FARMS RD

6	5	4	3	2	1
18	8	9	10	11	12
19	20	21	22	23	24
30	29	28	27	26	25
31	32	33	34	35	36

HERITAGE RD
 UNION PACIFIC RR
 FELIX RD
 HUNT HWY
 BUTTE AVE
 MAIN ST
 PINAL PKWY