

SEC. 33 TN.4S RG.9E

SEE MAP 200-31

200-38

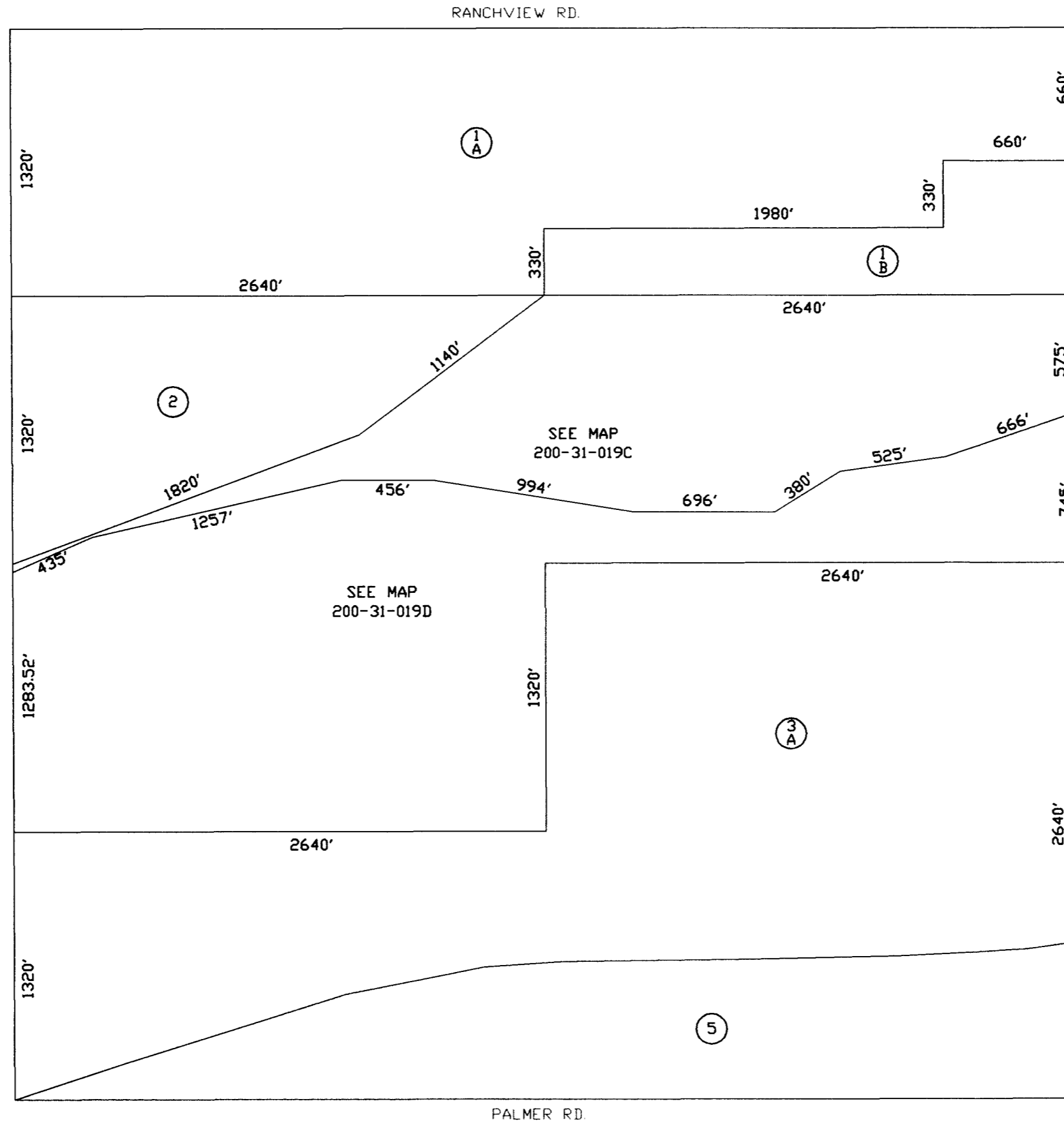
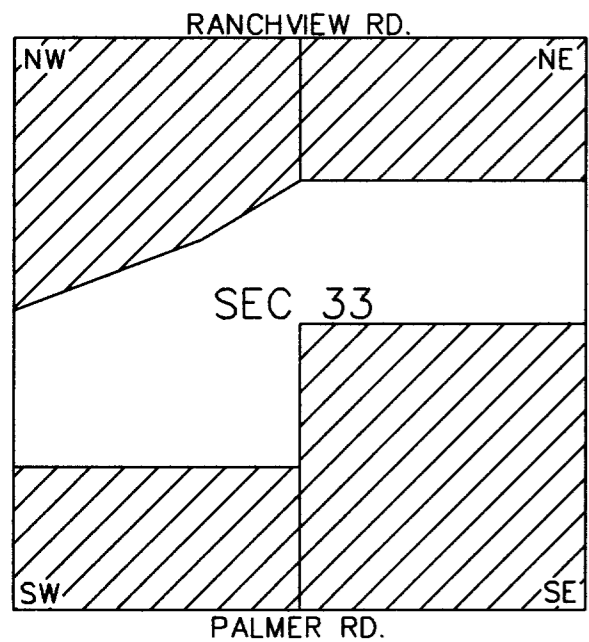
AREA CODE
0000

SPECIAL DISTRICTS
00000
00000

THIS MAP IS FOR TAX PURPOSES ONLY.
THIS OFFICE WILL NOT ASSUME LIABILITY FOR
REPRESENTATION, MEASUREMENTS OR ACREAGE.

SEE MAP 200-37

VICINITY MAP



THE ORIGINAL PLAT OF THIS SUBDIVISION IS
ON FILE WITH THE PINAL COUNTY RECORDERS
OFFICE, FOR COMPLETE INFORMATION OF PLAT
AND CC&R's CALL (520) 868-7100.

GIS CONVERSION

SEE MAP 200-39

HISCOX LN.



SCALE: 1" = 600'

07-08-2002

SEE BOOK 202

PINAL COUNTY ASSESSORS MAP