

200-76_3

SEC. 31 T.04S. R.09E.

MONTERRA SOUTH PARCEL 1 - 4

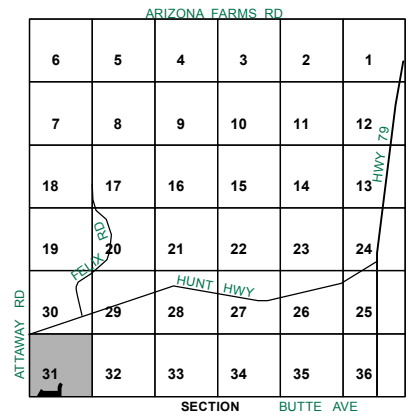
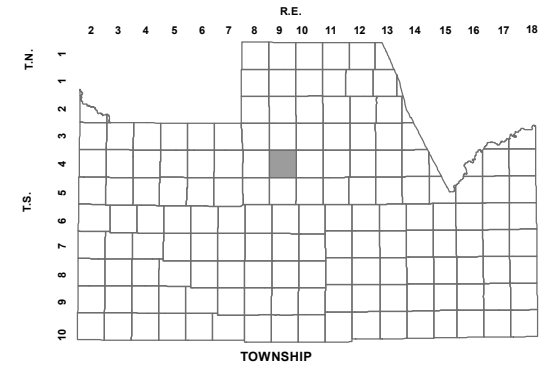
CAB. "G" SLD. 009

RE-SUBDIVISION OF TRACTS 4-A, 4-D & 4-E

MONTERRA SOUTH PARCEL 1 - 4

2014-030186

LOCATION MAPS



Revised: 7/17/2014

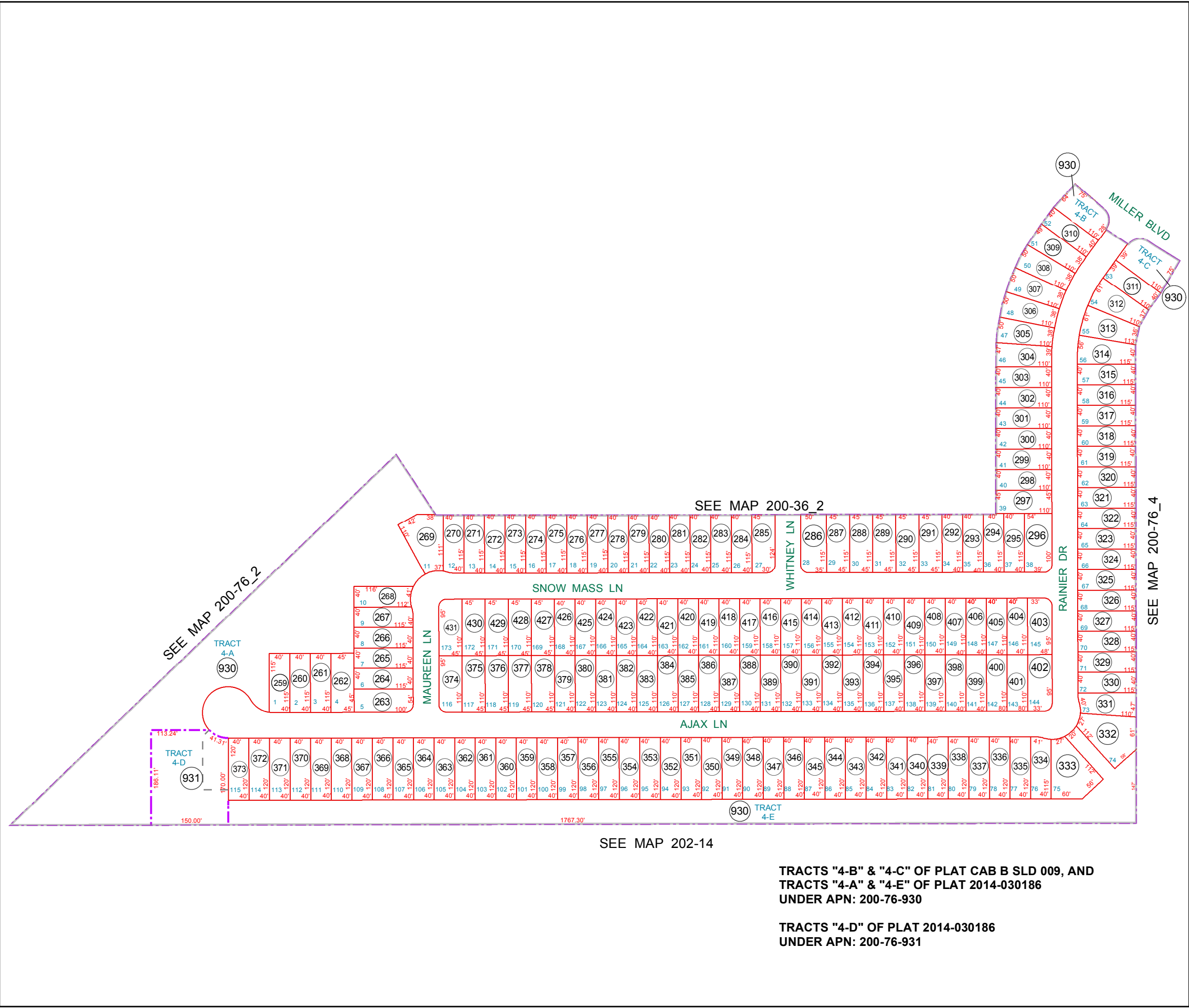
By: DW



PINAL COUNTY
wide open opportunity

Pinal County Assessor

THIS MAP DOES NOT REPRESENT A SURVEY. NO LIABILITY IS ASSUMED FOR THE ACCURACY OF THE DATA DELINEATED HEREIN, EITHER EXPRESSED OR IMPLIED BY PINAL COUNTY OR ITS EMPLOYEES. THIS MAP IS COMPILED FROM OFFICIAL RECORDS, INCLUDING PLATS, SURVEYS, RECORDED DEEDS AND CONTRACTS, AND ONLY CONTAINS INFORMATION REQUIRED FOR THE PINAL COUNTY ASSESSOR'S OFFICE PURPOSES.



TRACTS "4-B" & "4-C" OF PLAT CAB B SLD 009, AND TRACTS "4-A" & "4-E" OF PLAT 2014-030186 UNDER APN: 200-76-930

TRACTS "4-D" OF PLAT 2014-030186 UNDER APN: 200-76-931