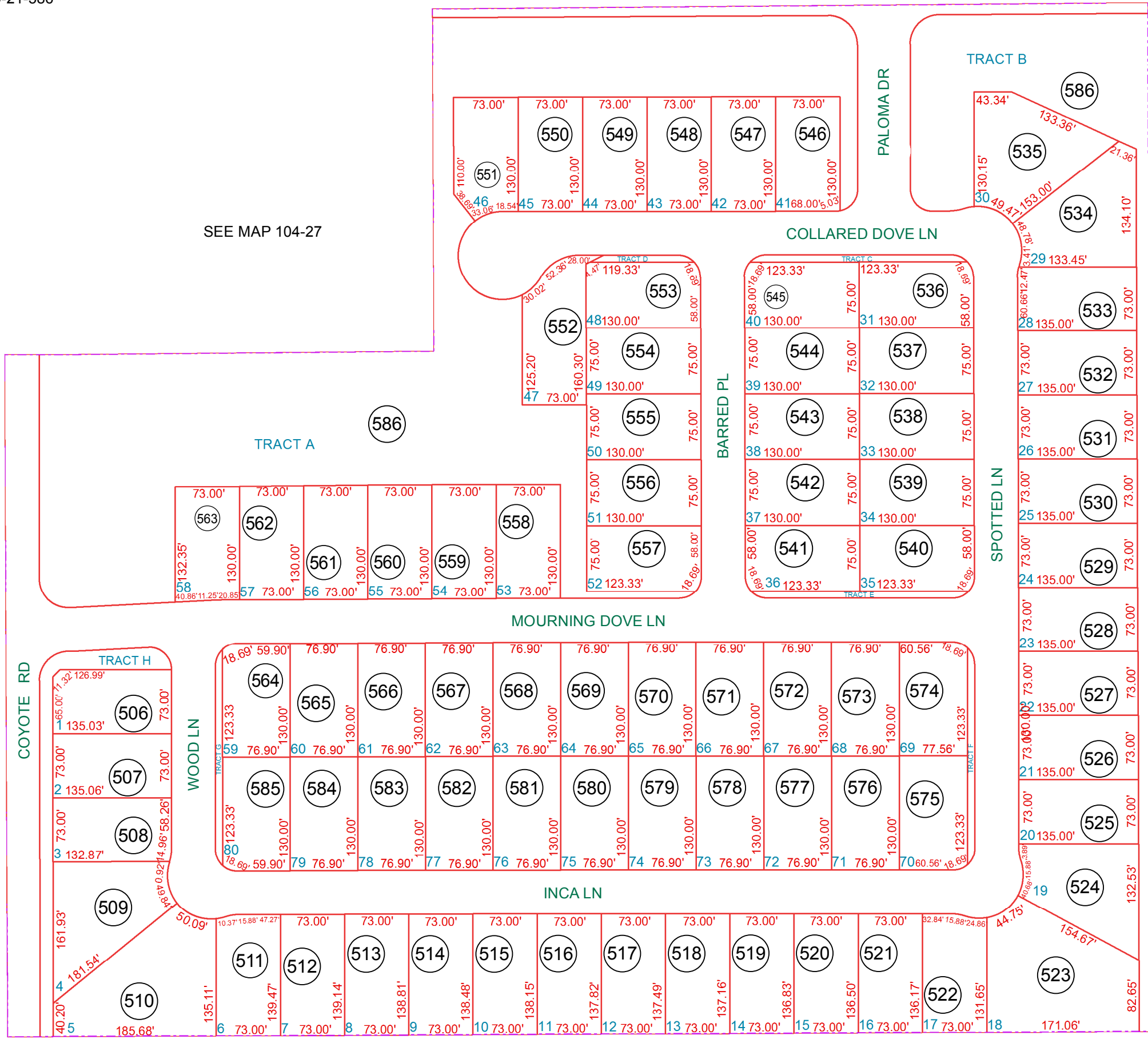


TRACTS A-H ARE UNDER  
APN # 109-21-586

SEE MAP 104-46

E OCOTILLO RD



SEE MAP 104-27

SEE MAP 104-27

SEE MAP 104-27

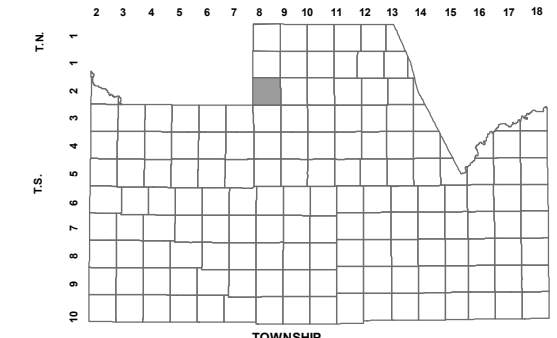
BOOK - MAP

# 109-21\_4

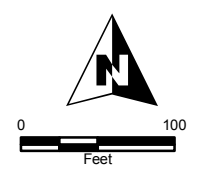
NW NE SEC. 21 T.02S. R.08E.

PALOMA RANCH : 2017-089175

LOCATION MAPS  
R.E.



|                 |              |            |             |    |    |
|-----------------|--------------|------------|-------------|----|----|
| MARICOPA COUNTY |              |            |             |    |    |
| 6               | 5            | 4          | 3           | 2  | 1  |
|                 |              |            | GERMANN RD  |    |    |
| 7               | 8            | 9          | 10          | 11 | 12 |
|                 |              |            | PIMA RD     |    |    |
| 18              | 17           | 16         | 15          | 14 | 13 |
|                 |              |            | OCOTILLO RD |    |    |
| 19              | 20           | 21         | 22          | 23 | 24 |
|                 | IRONWOOD DR  |            |             |    |    |
| 30              | 29           | 28         | 27          | 26 | 25 |
|                 | KENWORTHY RD | SCHNEPP RD | COMBS RD    |    |    |
| 31              | 32           | 33         | 34          | 35 | 36 |
|                 |              |            |             |    |    |
| SECTION         |              |            |             |    |    |



Revised: 4/11/2018

By: DW



**PINAL COUNTY**

WIDE OPEN OPPORTUNITY

Pinal County Assessor

THIS MAP DOES NOT REPRESENT A SURVEY. NO LIABILITY IS ASSUMED FOR THE ACCURACY OF THE DATA DELINEATED HEREIN, EITHER EXPRESSED OR IMPLIED BY PINAL COUNTY OR ITS EMPLOYEES. THIS MAP IS COMPILED FROM OFFICIAL RECORDS, INCLUDING PLATS, SURVEYS, RECORDED DEEDS AND CONTRACTS, AND ONLY CONTAINS INFORMATION REQUIRED FOR THE PINAL COUNTY ASSESSOR'S OFFICE PURPOSES.

SEE MAP 109-21\_3