

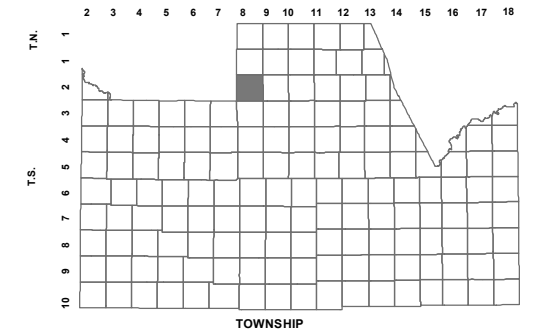
# 109-52\_3

## SEC. 32 T.02S. R.08E.

SHEA HOMES AT JOHNSON FARMS  
NEIGHBORHOOD 2:  
CAB H - SLIDE 035

REPLAT OF LOTS 282 & 283, TRACTS J AND  
A PORTION OF TRACT A OF  
SHEA HOMES AT JOHNSON FARMS,  
NEIGHBORHOOD 2  
2012-077538

LOCATION MAPS  
R.E.



6	5	4	3	2	1
7	8	9	10	11	12
18	17	16	15	14	13
19	20	21	22	23	24
30	29	28	27	26	25
31	32	33	34	35	36



Revised: 01//2013

By: YL

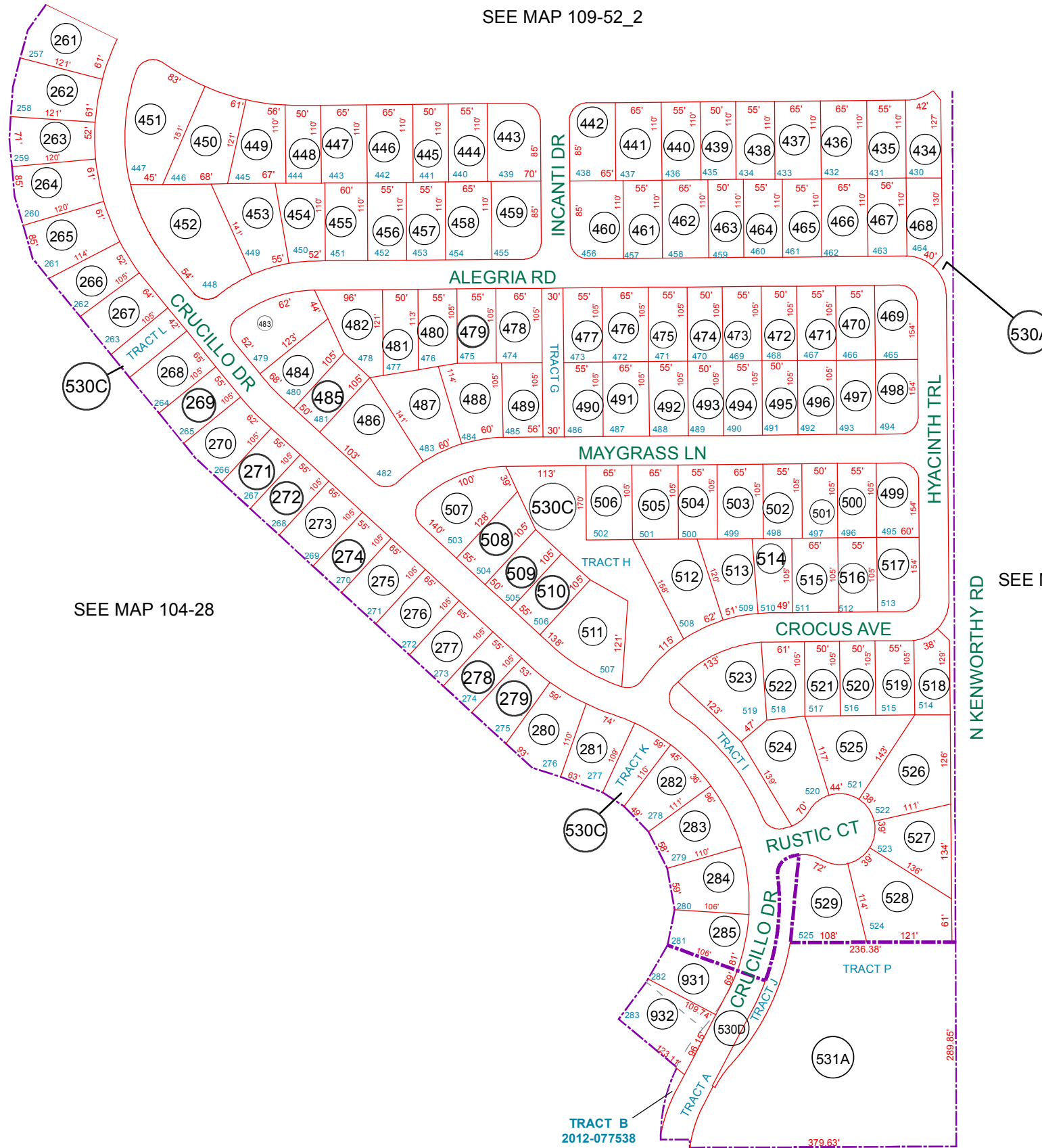


PINAL COUNTY  
*wide open opportunity*

**Pinal County Assessor**

THIS MAP DOES NOT REPRESENT A SURVEY. NO LIABILITY IS ASSUMED FOR THE ACCURACY OF THE DATA DELINEATED HEREIN, EITHER EXPRESSED OR IMPLIED BY PINAL COUNTY OR ITS EMPLOYEES. THIS MAP IS COMPILED FROM OFFICIAL RECORDS, INCLUDING PLATS, SURVEYS, RECORDED DEEDS AND CONTRACTS, AND ONLY CONTAINS INFORMATION REQUIRED FOR THE PINAL COUNTY ASSESSOR'S OFFICE PURPOSES.

SEE MAP 109-52\_2



SEE MAP 104-28

SEE MAP 104-64

SEE MAP 104-28

TRACTS: B, C, D, E, N & O  
UNDER PARCEL 109-52-530A  
CABINET H - SLIDE 035

TRACTS: F THRU I, K, L & M  
AND A PORTION OF TRACT A  
UNDER PARCEL 109-52-530C  
CABINET H - SLIDE 035

TRACTS: A, B & J  
UNDER PARCEL 109-52-530D  
RE-PLAT 2012-077538

TRACT: P  
UNDER PARCEL 109-52-531A  
RE-PLAT 2012-077538

TRACT B  
2012-077538