

COMMON AREA COMBO:
 IRONWOOD CROSSING UNIT 1
 TRACTS A THRU Z, TRACTS AA THRU ZZ,
 TRACTS AAA & BBB
 AND
 IRONWOOD CROSSING UNIT 3B
 TRACTS A THRU S
 ALL UNDER PARCEL 109-18-662E

SEE MAP 109-18_7

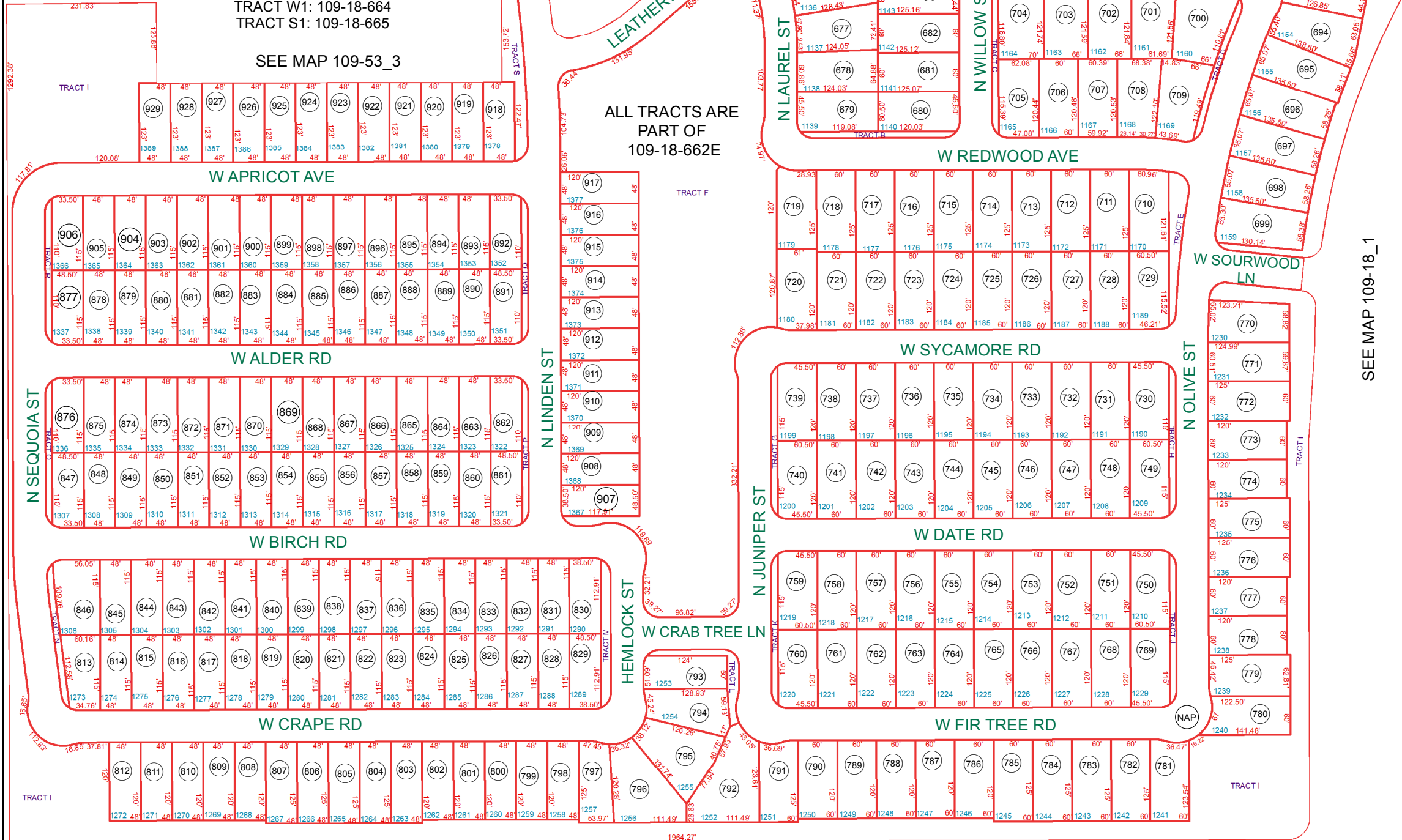
(EXCEPT FROM IRONWOOD UNIT 1)
 PORTION OF TRACT V (WELL SITE)
 UNDER PARCEL 109-18-662A
 PORTION OF TRACT P UNDER PARCEL 109-18-662D
 TRACT C1: 109-18-663A & 663B
 TRACT W1: 109-18-664
 TRACT S1: 109-18-665

SEE MAP 109-53_3

ALL TRACTS ARE
 PART OF
 109-18-662E

SEE MAP 104-25

SEE MAP 109-18_1



SEE MAP 104-26

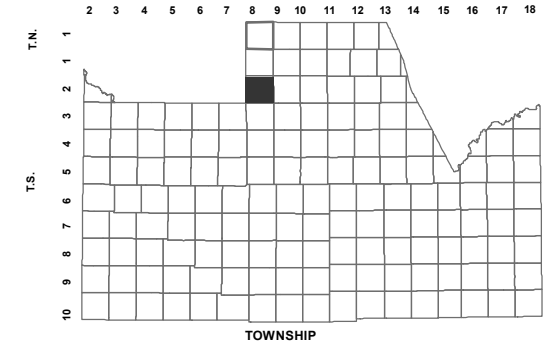
BOOK - MAP

109-52_7

S2 SW SEC. 18 T.02S. R.08E.

IRONWOOD CROSSING UNIT 3B: 2012-081597

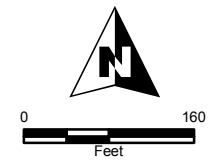
LOCATION MAPS
 R.E.



TOWNSHIP

6	5	4	3	2	1
7	8	9	10	11	12
18	17	16	15	14	13
19	20	21	22	23	24
30	29	28	27	26	25
31	32	33	34	35	36

SECTION



Revised: 12/22/2016

By: MBG



PINAL COUNTY
wide open opportunity

Pinal County Assessor

THIS MAP DOES NOT REPRESENT A SURVEY. NO LIABILITY IS ASSUMED FOR THE ACCURACY OF THE DATA DELINEATED HEREIN, EITHER EXPRESSED OR IMPLIED BY PINAL COUNTY OR ITS EMPLOYEES. THIS MAP IS COMPILED FROM OFFICIAL RECORDS, INCLUDING PLATS, SURVEYS, RECORDED DEEDS AND CONTRACTS, AND ONLY CONTAINS INFORMATION REQUIRED FOR THE PINAL COUNTY ASSESSOR'S OFFICE PURPOSES.