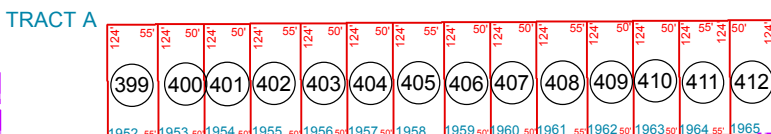
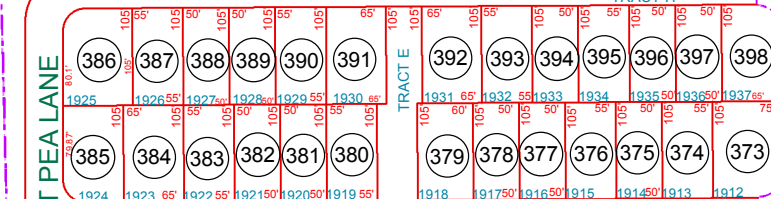


SEE MAP 104-22\_3

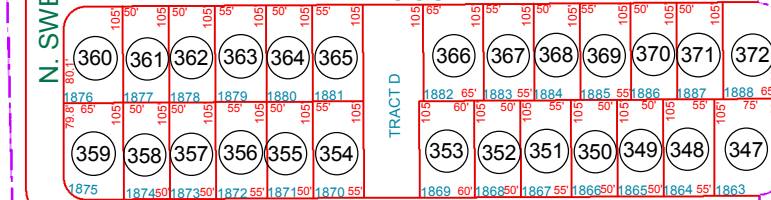
W COMBS RD



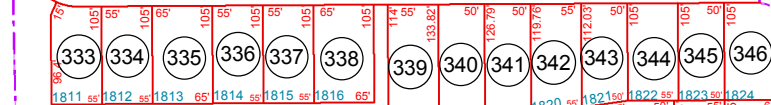
E. VESPER TRAIL



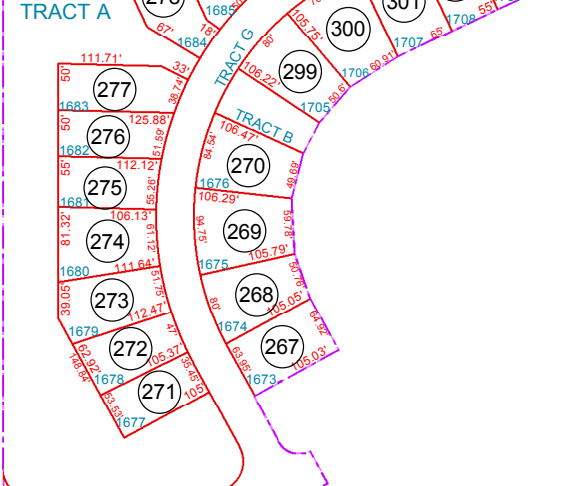
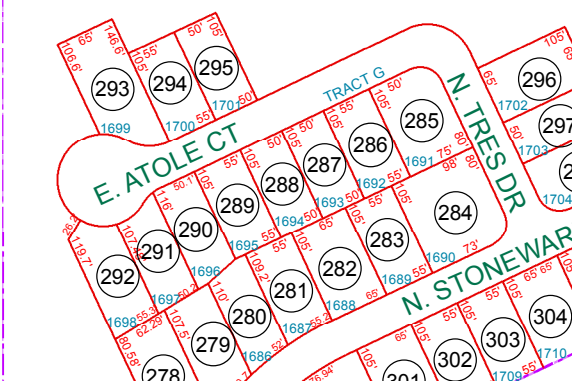
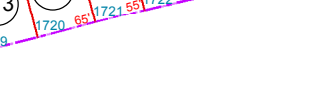
E. LADDOOS AVE



E. HARMONY WAY



TRACT A



E. BRACCIANO AVE

TRACT C OF NEIGHBORHOOD 6C PART OF APN 109-53-953 SEE MAP 109-53\_5

SEE MAP 104-28

SEE MAP 104-22\_2

N. GANTZEL RD

SEE MAP 109-52\_4

SEE MAP 109-52\_6

TRACTS: A, B, D, E, F, G & H UNDER APN: 109-53-413A

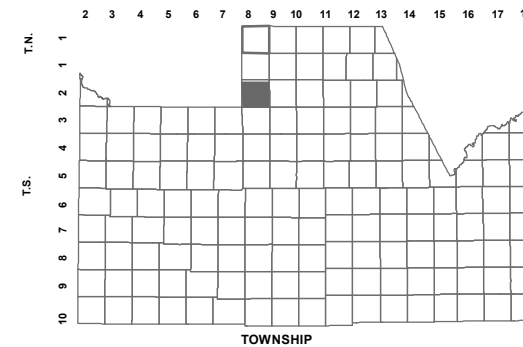
TRACT C HAS BEEN RE-PLATTED IN FEE 2014-066677 NOW PART OF APN: 109-53-935 SEE MAP 109-53\_5

BOOK - MAP

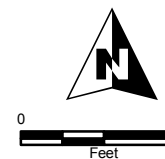
# 109-53\_2

NW SEC. 32 T.02S. R.08E.  
SHEA HOMES AT JOHNSON FARMS  
NEIGHBORHOOD 7A 2012-110779

LOCATION MAPS  
R.E.



|                    |    |    |    |    |    |
|--------------------|----|----|----|----|----|
| PECOS RD           |    |    |    |    |    |
| 6                  | 5  | 4  | 3  | 2  | 1  |
| GERMANN RD         |    |    |    |    |    |
| 7                  | 8  | 9  | 10 | 11 | 12 |
| IRONWOOD DR        |    |    |    |    |    |
| 18                 | 17 | 16 | 15 | 14 | 13 |
| OCOTILLO RD        |    |    |    |    |    |
| 19                 | 20 | 21 | 22 | 23 | 24 |
| KENWORTHY RD       |    |    |    |    |    |
| 30                 | 29 | 28 | 27 | 26 | 25 |
| SCHNEPPE RD        |    |    |    |    |    |
| 31                 | 32 | 33 | 34 | 35 | 36 |
| COMBS RD           |    |    |    |    |    |
| HASH KNIFE DRAW RD |    |    |    |    |    |
| SECTION            |    |    |    |    |    |



Revised: 8/10/2015

By: DW



PINAL COUNTY  
wide open opportunity

Pinal County Assessor

THIS MAP DOES NOT REPRESENT A SURVEY. NO LIABILITY IS ASSUMED FOR THE ACCURACY OF THE DATA DELINEATED HEREIN, EITHER EXPRESSED OR IMPLIED BY PINAL COUNTY OR ITS EMPLOYEES. THIS MAP IS COMPILED FROM OFFICIAL RECORDS, INCLUDING PLATS, SURVEYS, RECORDED DEEDS AND CONTRACTS, AND ONLY CONTAINS INFORMATION REQUIRED FOR THE PINAL COUNTY ASSESSOR'S OFFICE PURPOSES.