

ALL TRACTS A THRU I
 (EXCEPT PORTION OF TRACT I
 INCLUDED IN PLAT FEE 2014-066678)
 ARE UNDER PARCEL NUMBER: 109-53-881

ALL STREETS ARE PRIVATE.

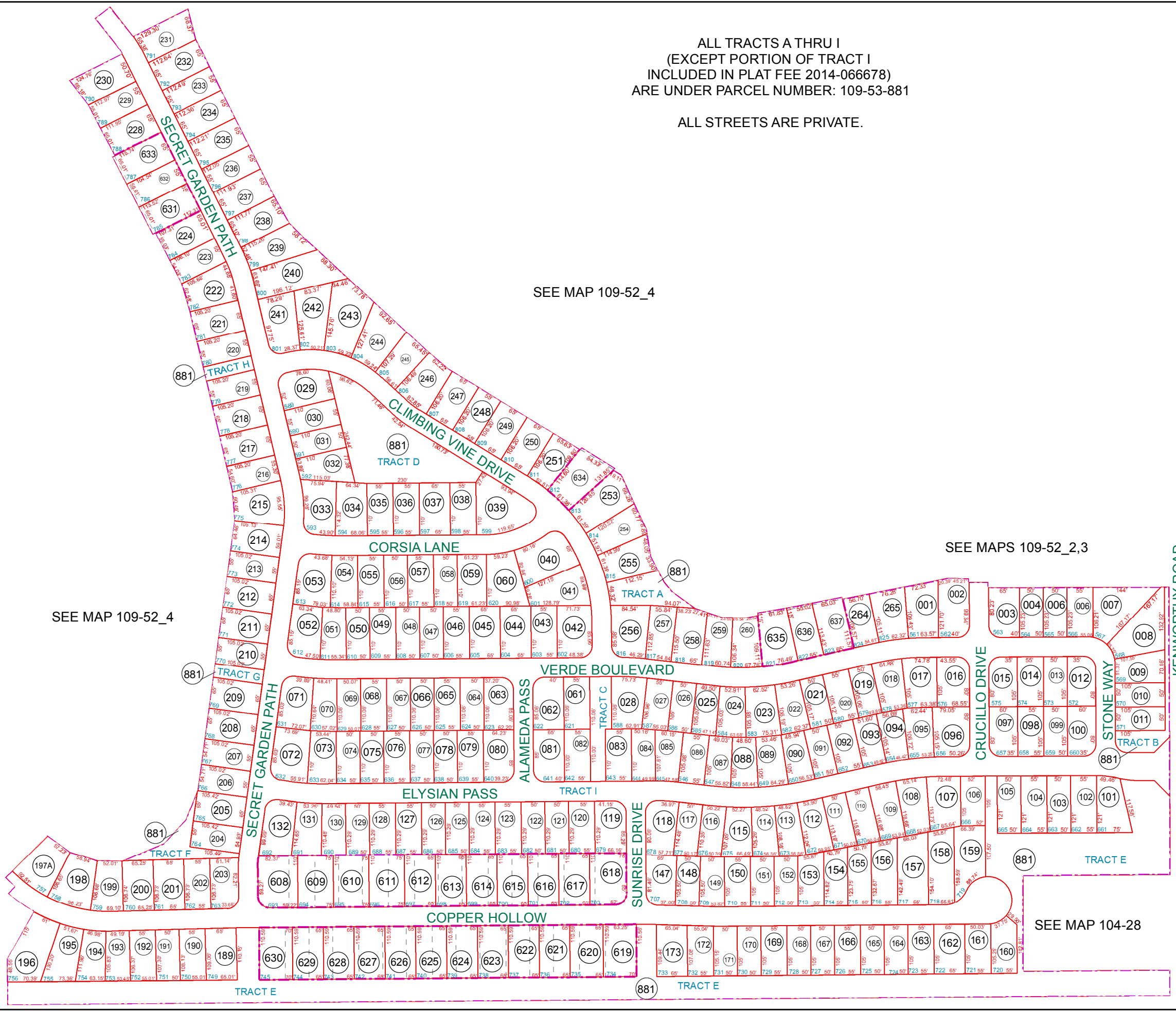
SEE MAP 109-52_4

SEE MAPS 109-52_2,3

SEE MAP 109-52_4

SEE MAP 104-64

SEE MAP 104-28



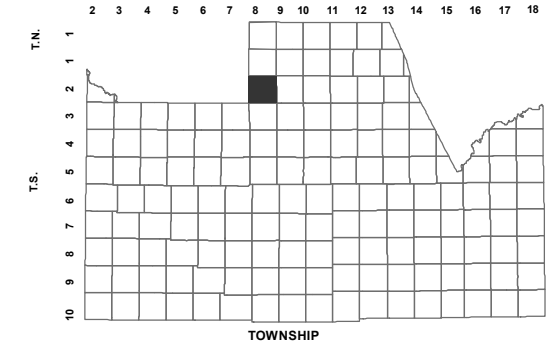
BOOK - MAP

109-53_1

SEC. 32 T.02S. R.08E.

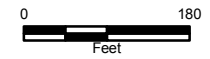
**SHEA HOMES AT JOHNSON FARMS
 NEIGHBORHOOD 3: 2012-094793
 AFFIDAVIT OF CORRECTION: 2013-003018
 RE-PLAT OF LOTS 693-703; 734-745; 785-787;
 812; 821-823 & TRACTS D & E: 2013-081052
 RE-PLAT OF PORTION OF LOT 757: 2015-005297**

LOCATION MAPS
 R.E.



TOWNSHIP

	6	5	4	3	2	1
6			GERMAN RD			
7		8	9	10	11	12
18		17	KENWORTHY RD			
19		20	21	22	23	24
30		29	28	27	26	25
31		32	33	34	35	36
			HASH KNIFE DRAW RD			



Revised: 7/21/2016

By: DW



PINAL COUNTY
wide open opportunity

Pinal County Assessor

THIS MAP DOES NOT REPRESENT A SURVEY. NO LIABILITY IS ASSUMED FOR THE ACCURACY OF THE DATA DELINEATED HEREIN, EITHER EXPRESSED OR IMPLIED BY PINAL COUNTY OR ITS EMPLOYEES. THIS MAP IS COMPILED FROM OFFICIAL RECORDS, INCLUDING PLATS, SURVEYS, RECORDED DEEDS AND CONTRACTS, AND ONLY CONTAINS INFORMATION REQUIRED FOR THE PINAL COUNTY ASSESSOR'S OFFICE PURPOSES.