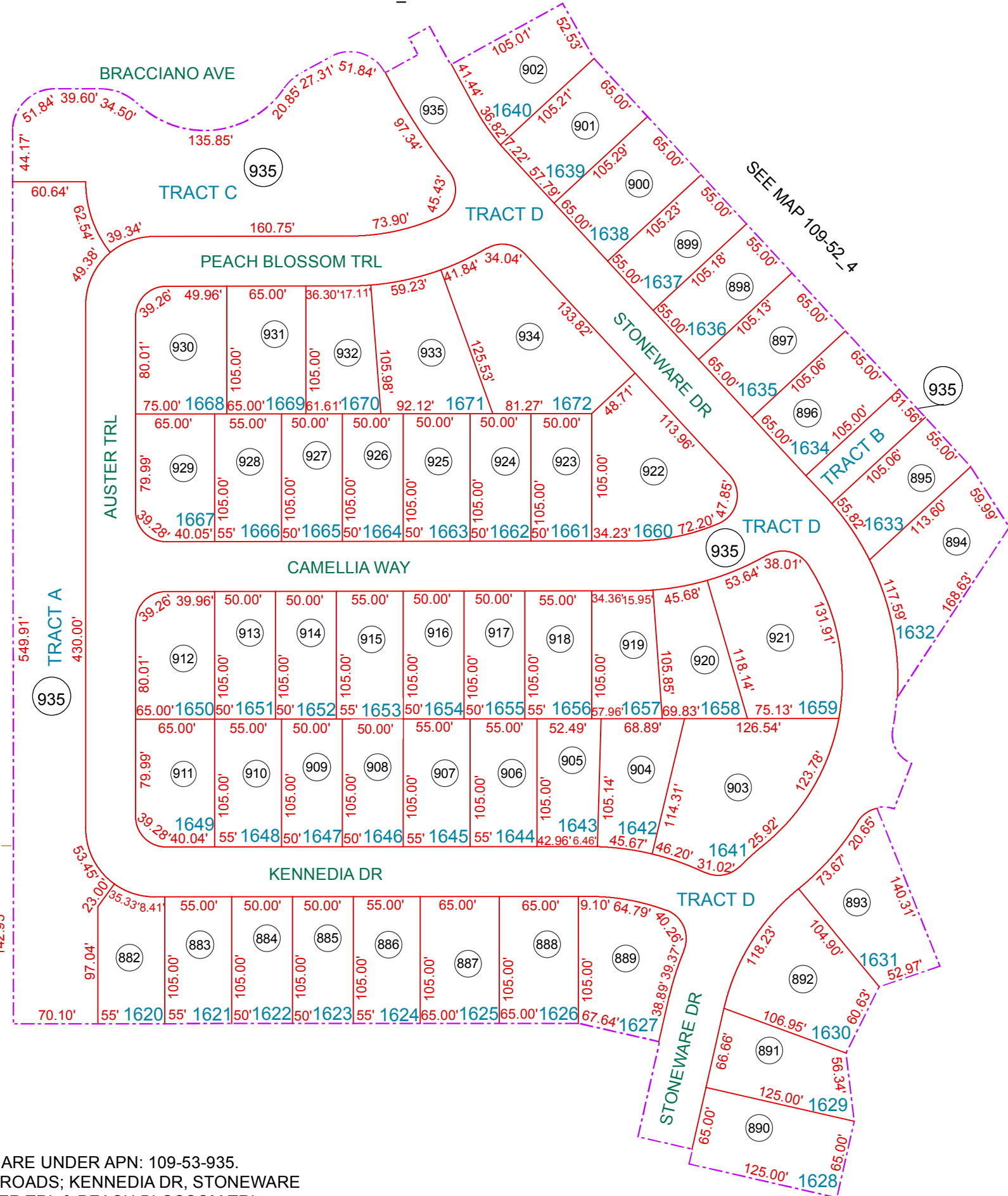


SEE MAP 109-53\_2



SEE MAP 104-22\_2

W1/4 CORNER 75.00'

SEE MAP 109-52\_5

ALL TRACTS (A, B, C & D) ARE UNDER APN: 109-53-935.  
 TRACT D IS THE PRIVATE ROADS; KENNEDIA DR, STONEWARE DR, CAMELLIA WAY, AUSTER TRL & PEACH BLOSSOM TRL.

SEE MAP 104-28

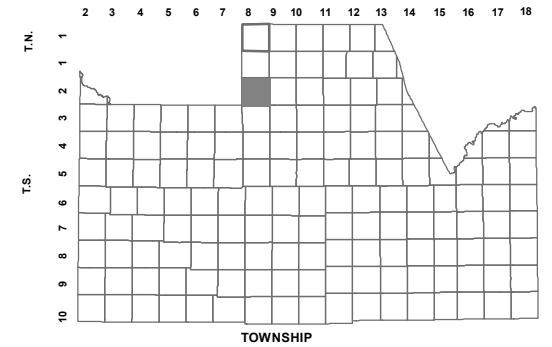
BOOK - MAP

# 109-53\_5

## SEC. 32 T.02S. R.08E.

**SHEA HOMES AT JOHNSON FARMS  
 NEIGHBORHOOD 6C:  
 2014-066677**

LOCATION MAPS  
R.E.



PECOS RD		5	4	3	2	1
6	GERMANN DR	8	9	10	11	12
7	IRONWOOD DR	17	16	15	14	13
18	OCOTILLO RD	21	22	23	24	
19	KENWORTHY RD	28	27	26	25	
30	COMBS RD	33	34	35	36	
31	GANTZEL RD	32	HASH KNIFE DRAW RD			
		SECTION				



Revised: 8/10/2015

By: DW



**PINAL COUNTY**  
*wide open opportunity*

**Pinal County Assessor**

THIS MAP DOES NOT REPRESENT A SURVEY. NO LIABILITY IS ASSUMED FOR THE ACCURACY OF THE DATA DELINEATED HEREIN, EITHER EXPRESSED OR IMPLIED BY PINAL COUNTY OR ITS EMPLOYEES. THIS MAP IS COMPILED FROM OFFICIAL RECORDS, INCLUDING PLATS, SURVEYS, RECORDED DEEDS AND CONTRACTS, AND ONLY CONTAINS INFORMATION REQUIRED FOR THE PINAL COUNTY ASSESSOR'S OFFICE PURPOSES.