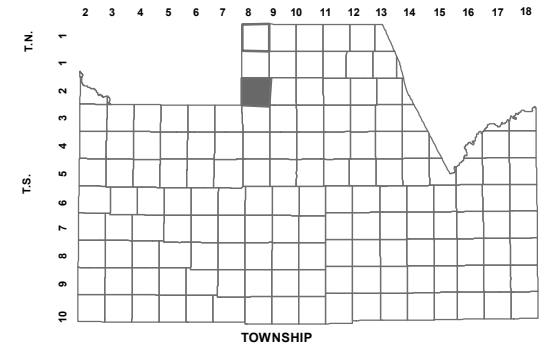


109-54_4

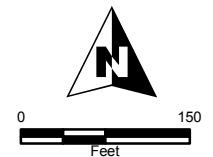
S2 NW SEC. 18 T.02S. R.08E.

**IRONWOOD CROSSING UNIT 4A:
2016-027985**

LOCATION MAPS
R.E.



MARIKOPIA COUNTY					
6	5	4	3	2	1
7	8	9	10	11	12
18	17	16	15	14	13
19	20	21	22	23	24
30	29	28	27	26	25
31	32	33	34	35	36
SECTION					



Revised: 5/31/2017

By: MBG



PINAL COUNTY
wide open opportunity

Pinal County Assessor

THIS MAP DOES NOT REPRESENT A SURVEY. NO LIABILITY IS ASSUMED FOR THE ACCURACY OF THE DATA DELINEATED HEREIN, EITHER EXPRESSED OR IMPLIED BY PINAL COUNTY OR ITS EMPLOYEES. THIS MAP IS COMPILED FROM OFFICIAL RECORDS, INCLUDING PLATS, SURVEYS, RECORDED DEEDS AND CONTRACTS, AND ONLY CONTAINS INFORMATION REQUIRED FOR THE PINAL COUNTY ASSESSOR'S OFFICE PURPOSES.

SEE MAP 109-54_3

SEE MAP 109-54_2

SEE MAP 109-18_5

SEE MAP 109-18_7

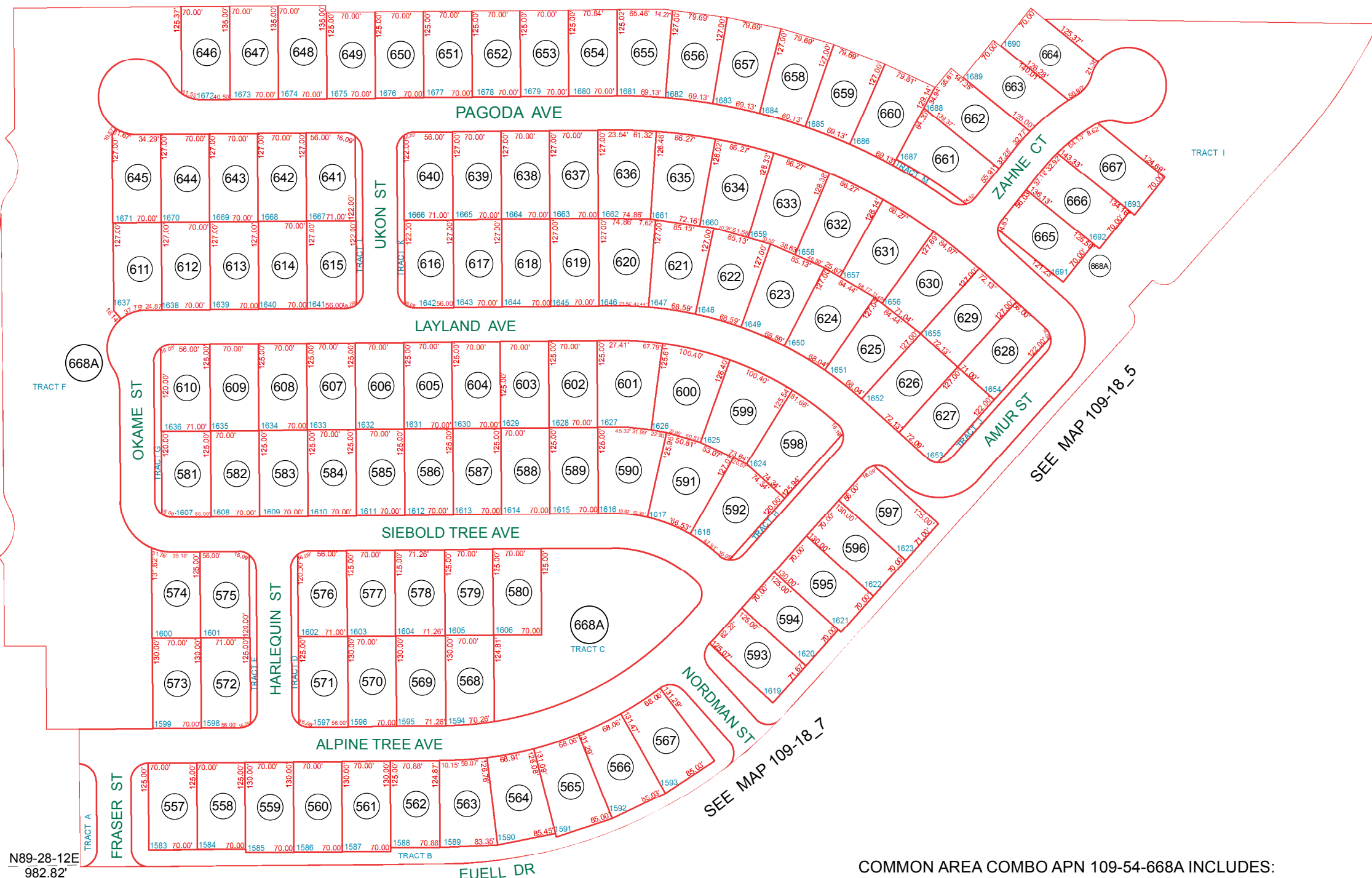
SEE MAP 109-53_3

SEE MAP 104-25

N00-31-47W,
265.14'

N89-28-12E
982.82'

W 1/4
CORNER



COMMON AREA COMBO APN 109-54-668A INCLUDES:
ALL TRACTS (A THRU F) OF IRONWOOD CROSSING UNIT 3A - TRACT K
ALL TRACTS (A THRU M) OF IRONWOOD CROSSING UNIT 4A
ALL TRACTS (A THRU O) OF IRONWOOD CROSSING UNIT 4B