

SEC. 06 TN.01S RG.09E

SEE MAP 104-09

108-20

**PARCEL 22 EAST
@ GOLD CANYON
RANCH
CAB C, SLD 035**

**AREA CODE
4321**

**SPECIAL DISTRICTS
11642
24002**

THIS MAP IS FOR TAX PURPOSES ONLY.

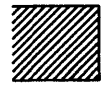
THIS OFFICE WILL NOT ASSUME LIABILITY FOR
REPRESENTATION, MEASUREMENTS OR ACREAGE.

All Tracts part of 104-09-027A

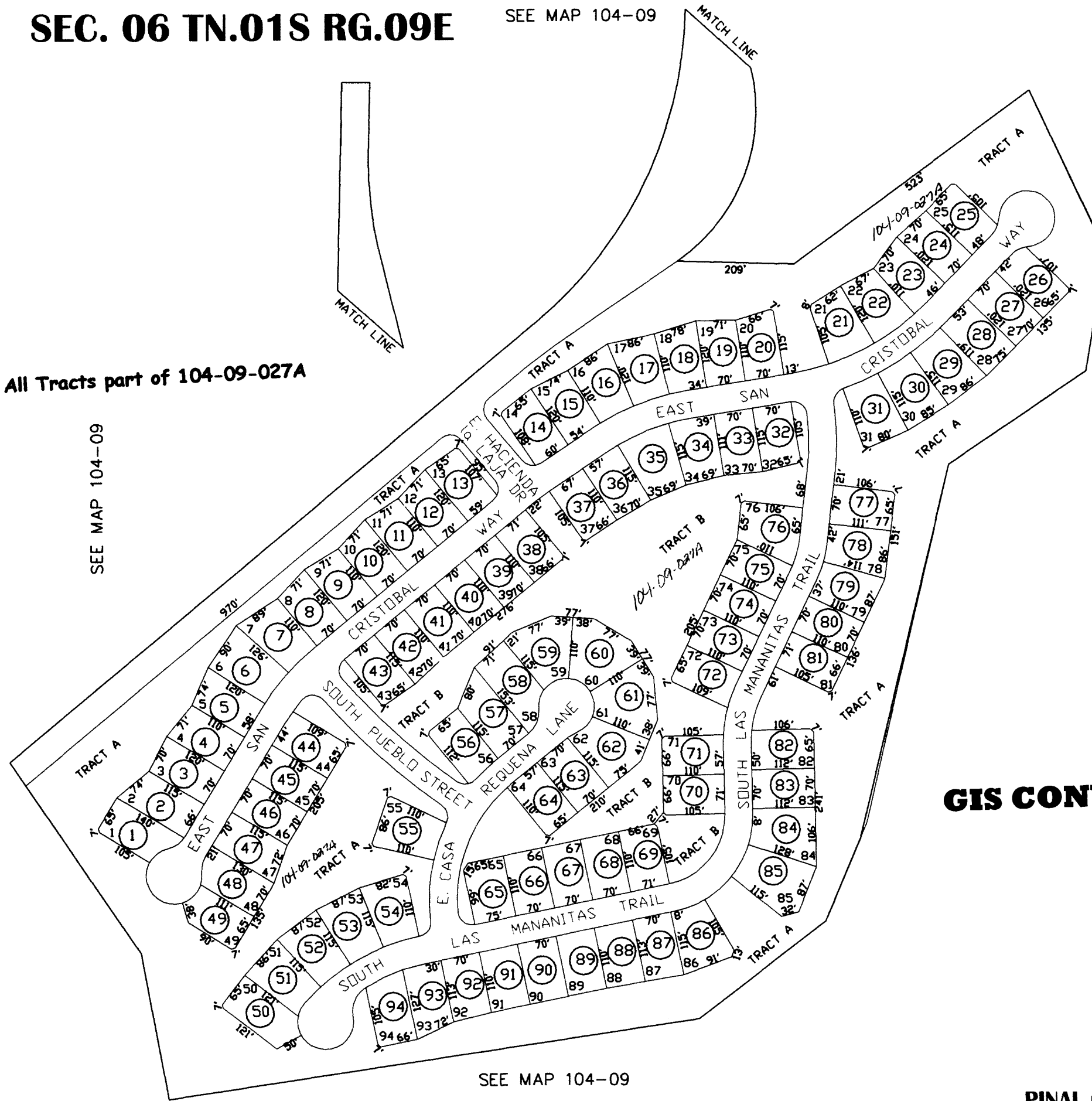
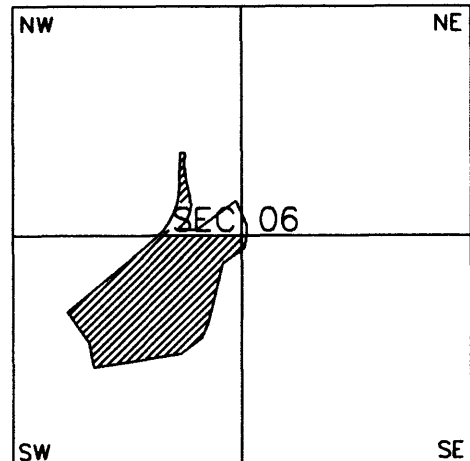
SEE MAP 104-09

SEE MAP 104-09

THE ORIGINAL PLAT OF THIS SUBDIVISION IS
ON FILE WITH THE PINAL COUNTY RECORDERS
OFFICE, FOR COMPLETE INFORMATION OF PLAT
AND CC&R'S CALL (520) 868-7100.



VICINITY MAP



SEE MAP 104-09

GIS CONVERSION

SCALE: 1" = 200'

01-10-2003

PINAL COUNTY ASSESSORS MAP