

AREA CODE
0000

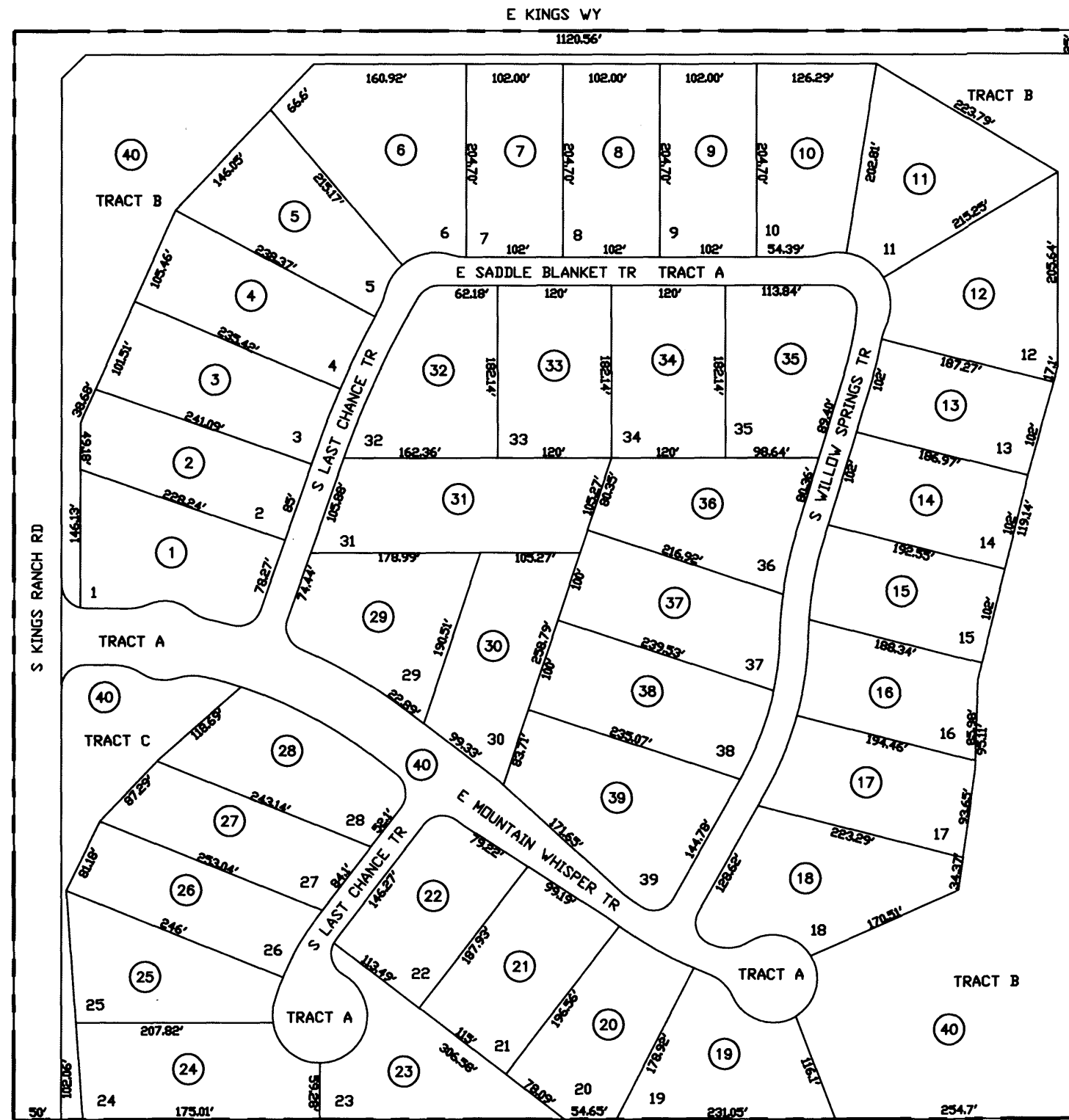
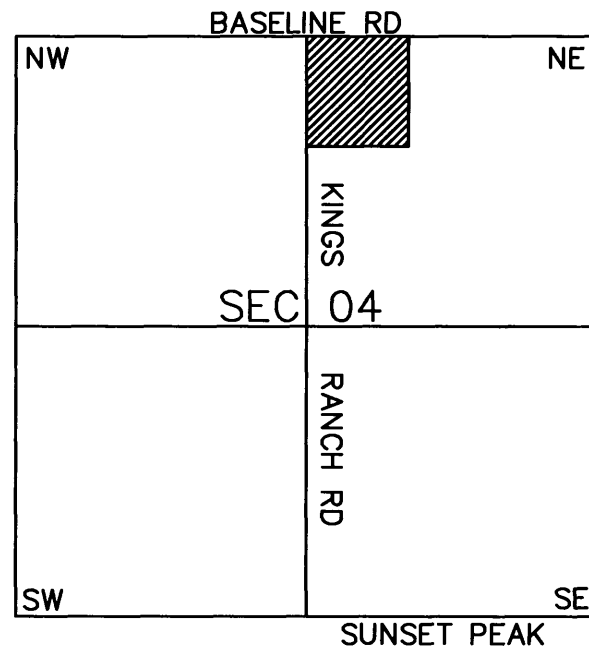
SPECIAL DISTRICTS
00000
00000

THIS MAP IS FOR TAX PURPOSES ONLY.
THIS OFFICE WILL NOT ASSUME LIABILITY FOR
REPRESENTATION, MEASUREMENTS OR ACREAGE.

THE ORIGINAL PLAT OF THIS SUBDIVISION IS
ON FILE WITH THE PINAL COUNTY RECORDERS
OFFICE, FOR COMPLETE INFORMATION OF PLAT
AND CC&R's CALL (520) 868-7100.

SEE MAP 104-10

VICINITY MAP



SEE MAP 104-10

MOUNTAIN WHISPER
AT GOLD CANYON

CAB C - SLD 088

REPLAT OF MOUNTAIN WHISPER
AT GOLD CANYON

CAB D - SLD 125

SEE MAP 104-10



SCALE: 1" = 150'

04-17-2003