

# SEC. 06 TN.01S RG.09E

SEE MAP 108-24

# 108-23

## PARCEL 24 EAST @ GOLD CANYON RANCH CAB. C, SLD. 019

AREA CODE  
4321

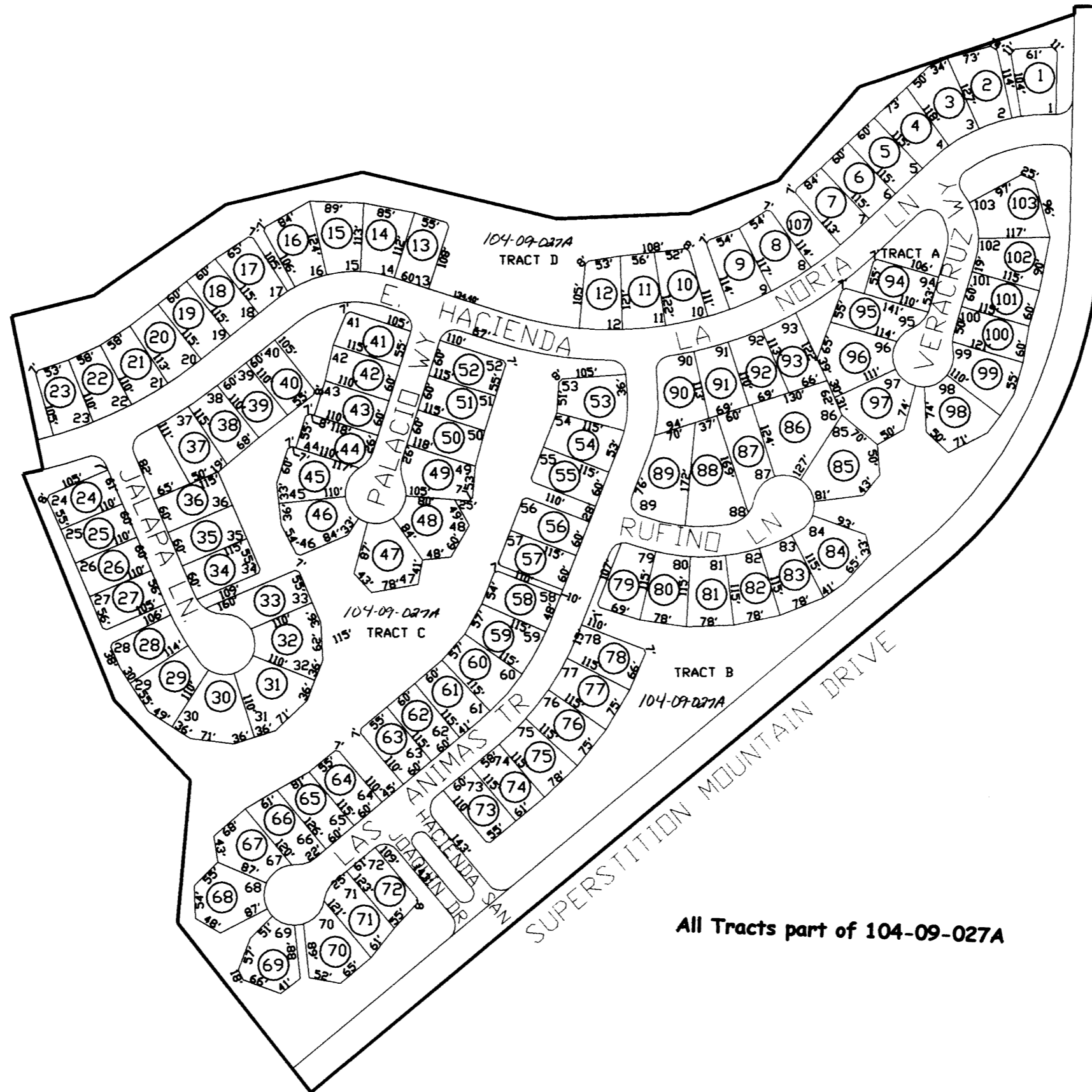
SPECIAL DISTRICTS  
11642  
24002

THIS MAP IS FOR TAX PURPOSES ONLY.

THIS OFFICE WILL NOT ASSUME LIABILITY FOR  
REPRESENTATION, MEASUREMENTS OR ACREAGE.

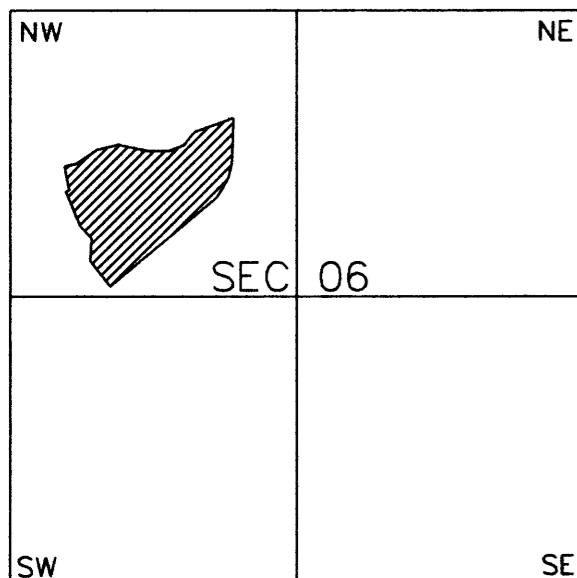
THE ORIGINAL PLAT OF THIS SUBDIVISION IS  
ON FILE WITH THE PINAL COUNTY RECORDERS  
OFFICE, FOR COMPLETE INFORMATION OF PLAT  
AND CC&R'S CALL (520) 868-7100.

SEE MAP 104-09



SEE MAP 104-09

### NEIGHBORHOOD MAP



SCALE: 1" = 200'

01-10-2003

All Tracts part of 104-09-027A

## GIS CONVERSION

SEE MAP 104-09

PINAL COUNTY ASSESSORS MAP