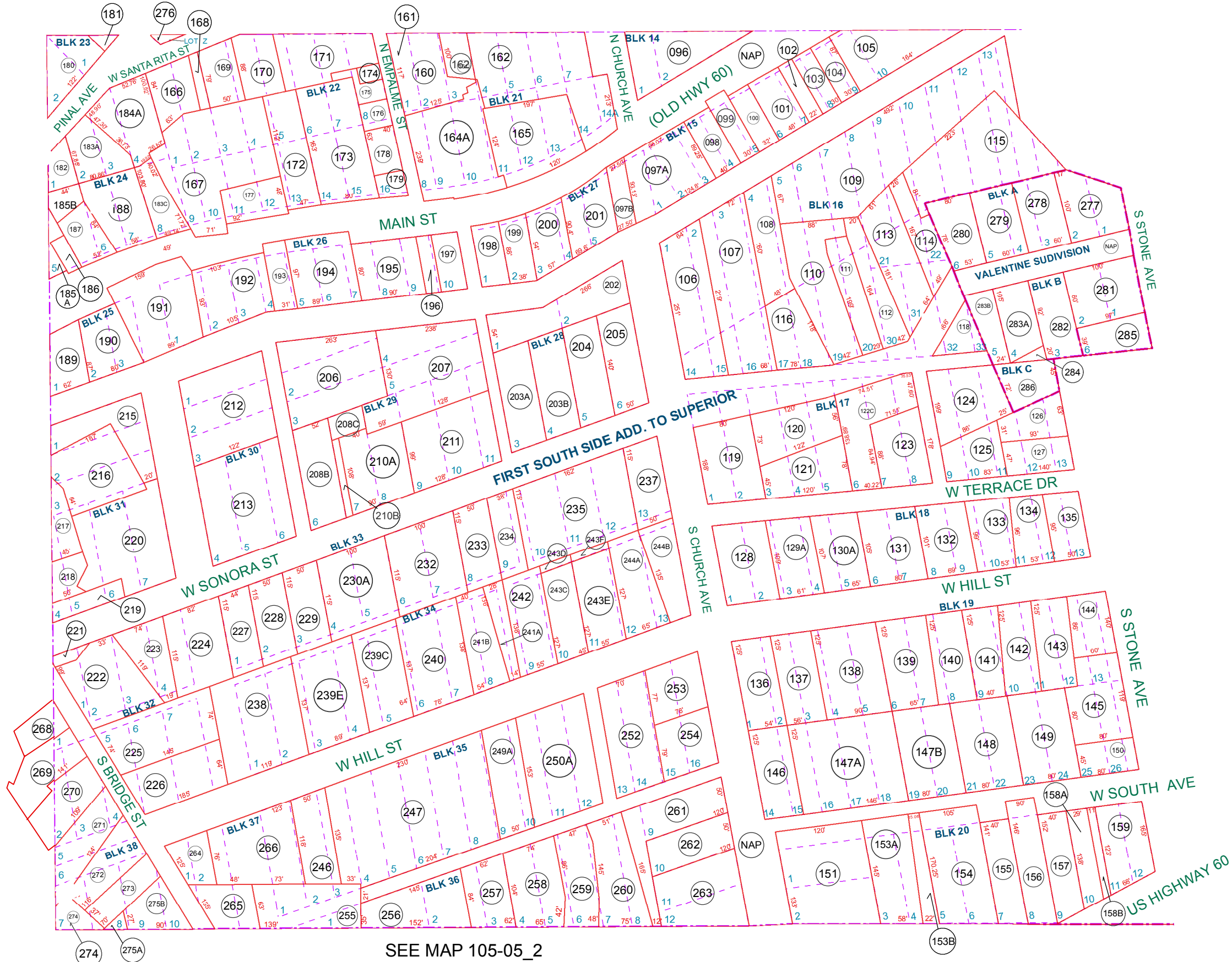


SEE MAP 106-09_1



SEE MAP 105-05_2

SEE MAP 105-05_1

ABANDONMENT OF ALLEY
IN BLKS 32, 33 & 34 RECORDED IN 2005-079193

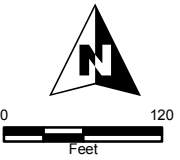
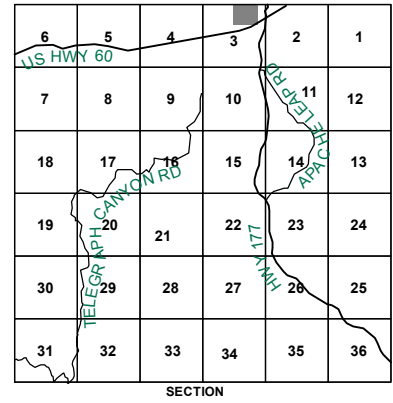
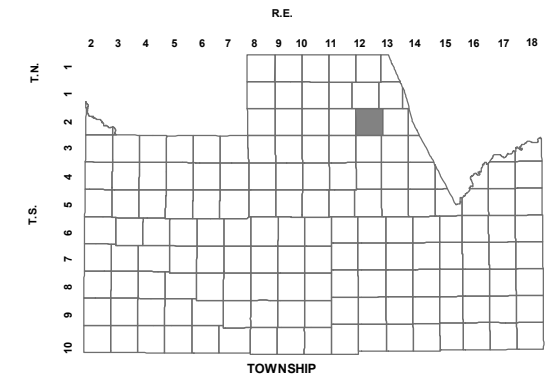
BOOK - MAP

105-04_2

N/2 NE SEC 3 T.02S. R.12E.
FIRST SOUTH SIDE ADDITION TO SUPERIOR
BOOK 3 OF MAPS PAGE 035

VALENTINE SUBDIVISION OF SUPERIOR
BOOK 4 OF MAPS PAGE 013

LOCATION MAPS



Revised: 11/13/2018

By: **TH**



PINAL COUNTY
WIDE OPEN OPPORTUNITY

Pinal County Assessor

THIS MAP DOES NOT REPRESENT A SURVEY. NO LIABILITY IS ASSUMED FOR THE ACCURACY OF THE DATA DELINEATED HEREIN, EITHER EXPRESSED OR IMPLIED BY PINAL COUNTY OR ITS EMPLOYEES. THIS MAP IS COMPILED FROM OFFICIAL RECORDS, INCLUDING PLATS, SURVEYS, RECORDED DEEDS AND CONTRACTS, AND ONLY CONTAINS INFORMATION REQUIRED FOR THE PINAL COUNTY ASSESSOR'S OFFICE PURPOSES.

SEE MAP 105-06

SEE MAP 105-04_1