

SEC 27, TN.2S RG.12E

SEE MAP 105-17

105-20

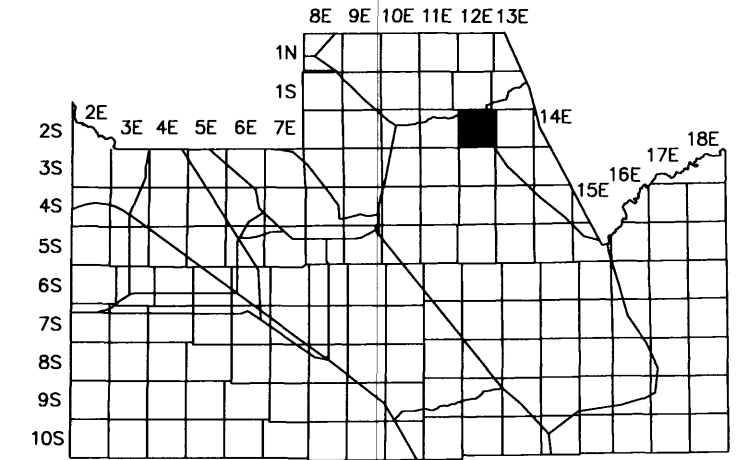
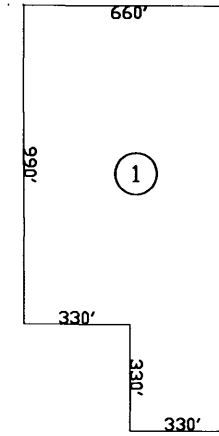
AREA CODE
0000

SPECIAL DISTRICTS
00000
00000

THIS MAP IS FOR TAX PURPOSES ONLY.
THIS OFFICE WILL NOT ASSUME LIABILITY FOR
REPRESENTATION, MEASUREMENTS OR ACREAGE.

THE ORIGINAL PLAT OF THIS SUBDIVISION IS
ON FILE WITH THE PINAL COUNTY RECORDERS
OFFICE, FOR COMPLETE INFORMATION OF PLAT
AND CC&R's CALL (520) 868-7100.

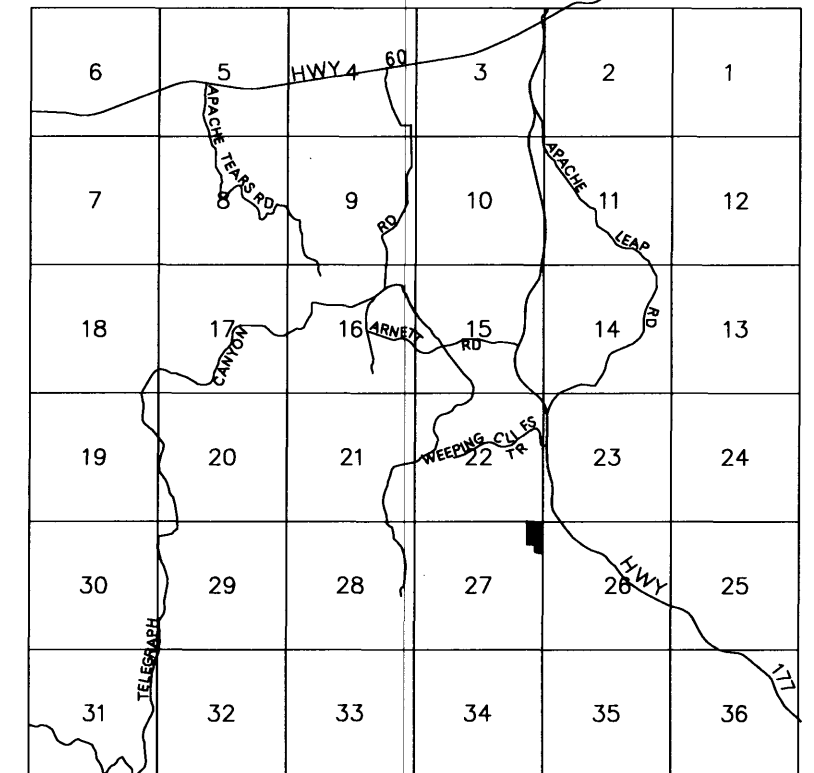
SEE MAP 105-01



SCALE: 1" = 600'
04-15-2005

VICINITY MAP

SEE MAP 105-19



SEE MAP 105-01

PINAL COUNTY ASSESSORS MAP