

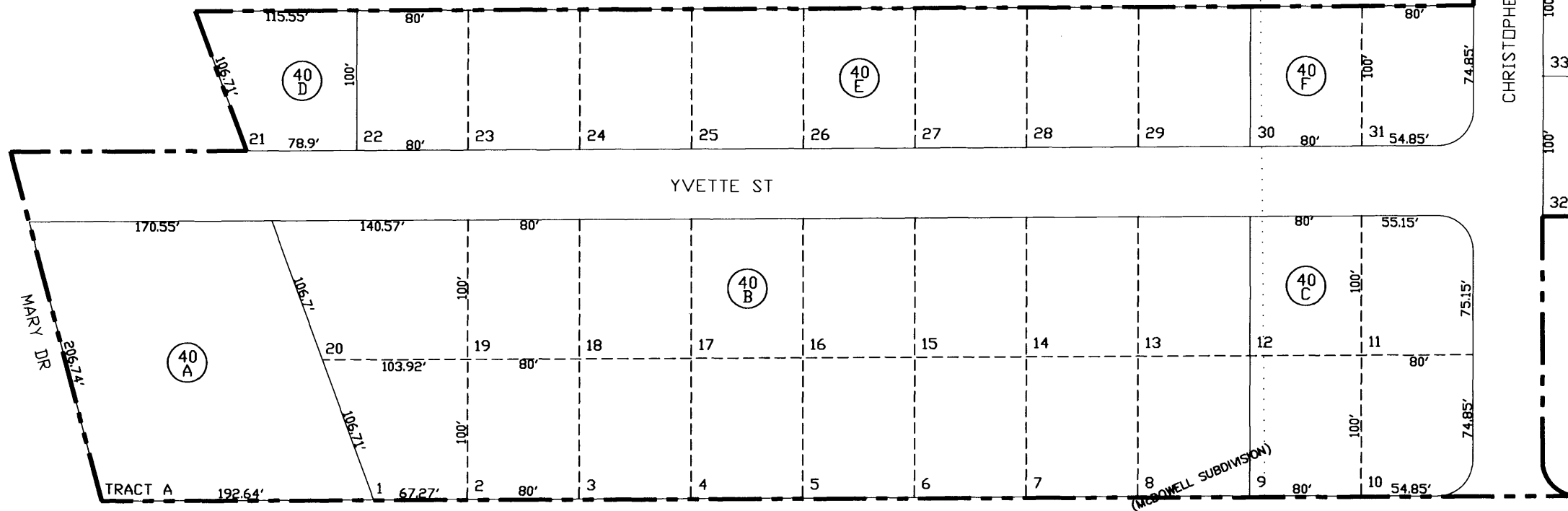
POR OF SEC 03 SW & 04 SE, TN.2S RG.12E

AREA CODE
0000

SPECIAL DISTRICTS
00000
00000



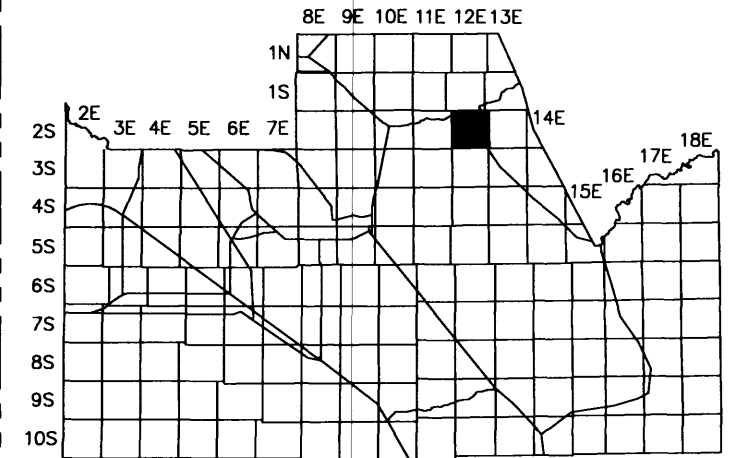
SEE MAP 105-11_1



SEE MAP 105-11_1

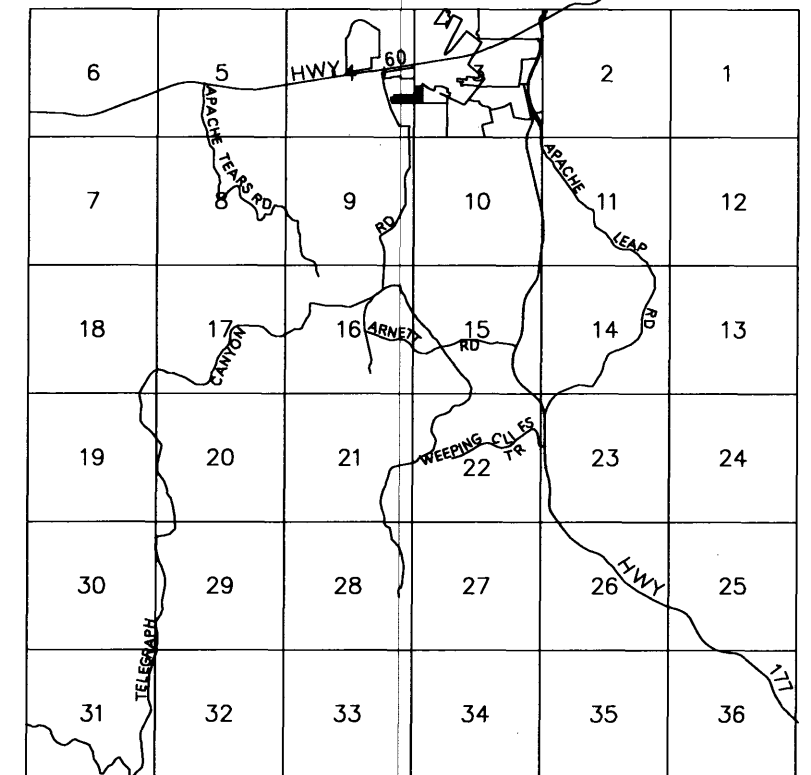
105-22

SUPERIOR VISTA
SUBDIVISION PHASE 1
BK 19 - PG 046



04-15-2005

VICINITY MAP



PINAL COUNTY ASSESSORS MAP

THIS MAP IS FOR TAX PURPOSES ONLY.
THIS OFFICE WILL NOT ASSUME LIABILITY FOR
REPRESENTATION, MEASUREMENTS OR ACREAGE.

THE ORIGINAL PLAT OF THIS SUBDIVISION IS
ON FILE WITH THE PINAL COUNTY RECORDERS
OFFICE, FOR COMPLETE INFORMATION OF PLAT
AND CC&R's CALL (520) 868-7100.