

BOOK - MAP

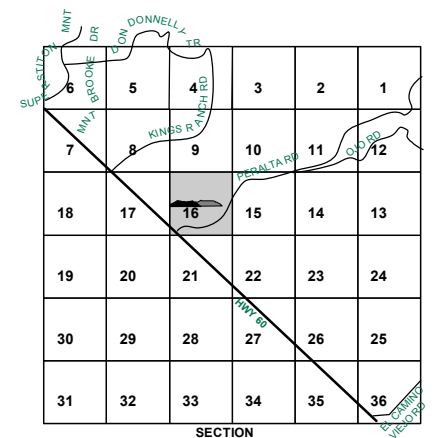
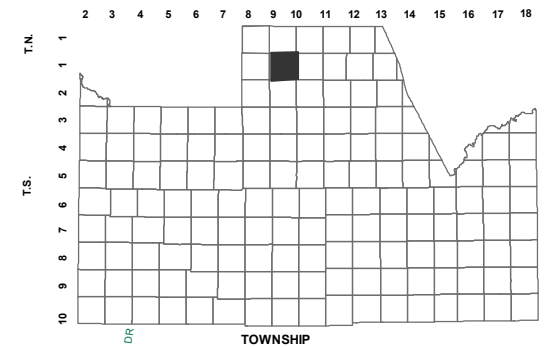
104-09_10

NW SEC. 16 T.01S. R.09E.

PERALTA CANYON PARCEL 2:

2017-055294

LOCATION MAPS
R.E.



Revised: 1/24/2018

By: *DW*



PINAL COUNTY

WIDE OPEN OPPORTUNITY

Pinal County Assessor

THIS MAP DOES NOT REPRESENT A SURVEY. NO LIABILITY IS ASSUMED FOR THE ACCURACY OF THE DATA DELINEATED HEREIN, EITHER EXPRESSED OR IMPLIED BY PINAL COUNTY OR ITS EMPLOYEES. THIS MAP IS COMPILED FROM OFFICIAL RECORDS, INCLUDING PLATS, SURVEYS, RECORDED DEEDS AND CONTRACTS, AND ONLY CONTAINS INFORMATION REQUIRED FOR THE PINAL COUNTY ASSESSOR'S OFFICE PURPOSES.

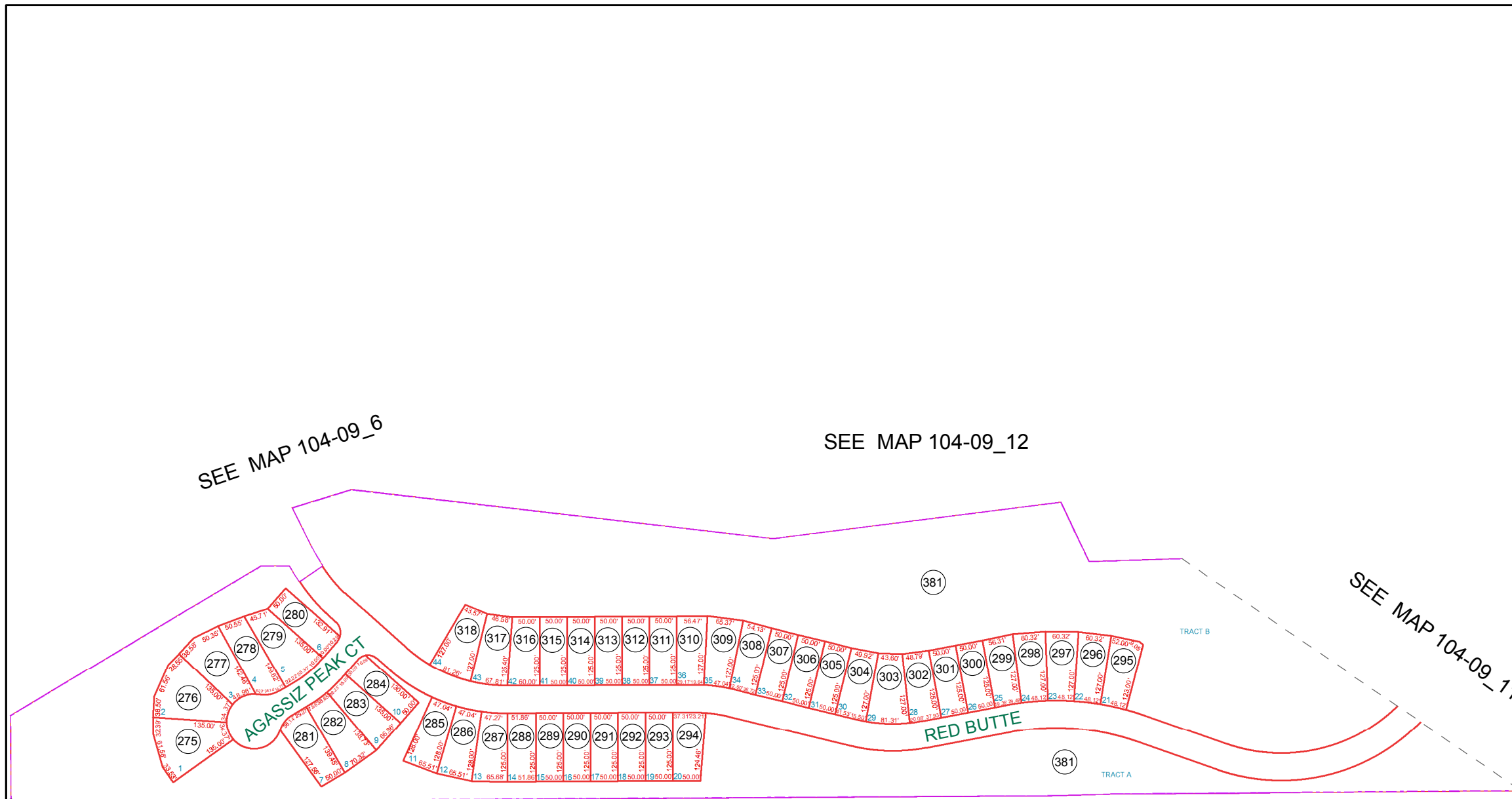
SEE MAP 104-09_6

SEE MAP 104-09_12

SEE MAP 104-09_11

SEE MAP 108-74_10

WEST
1/4 CORNER



TRACTS A & B ARE UNDER PARCEL: 104-09-381
TRACTS C, D, E, & F UNDER PARCEL: 104-09-382