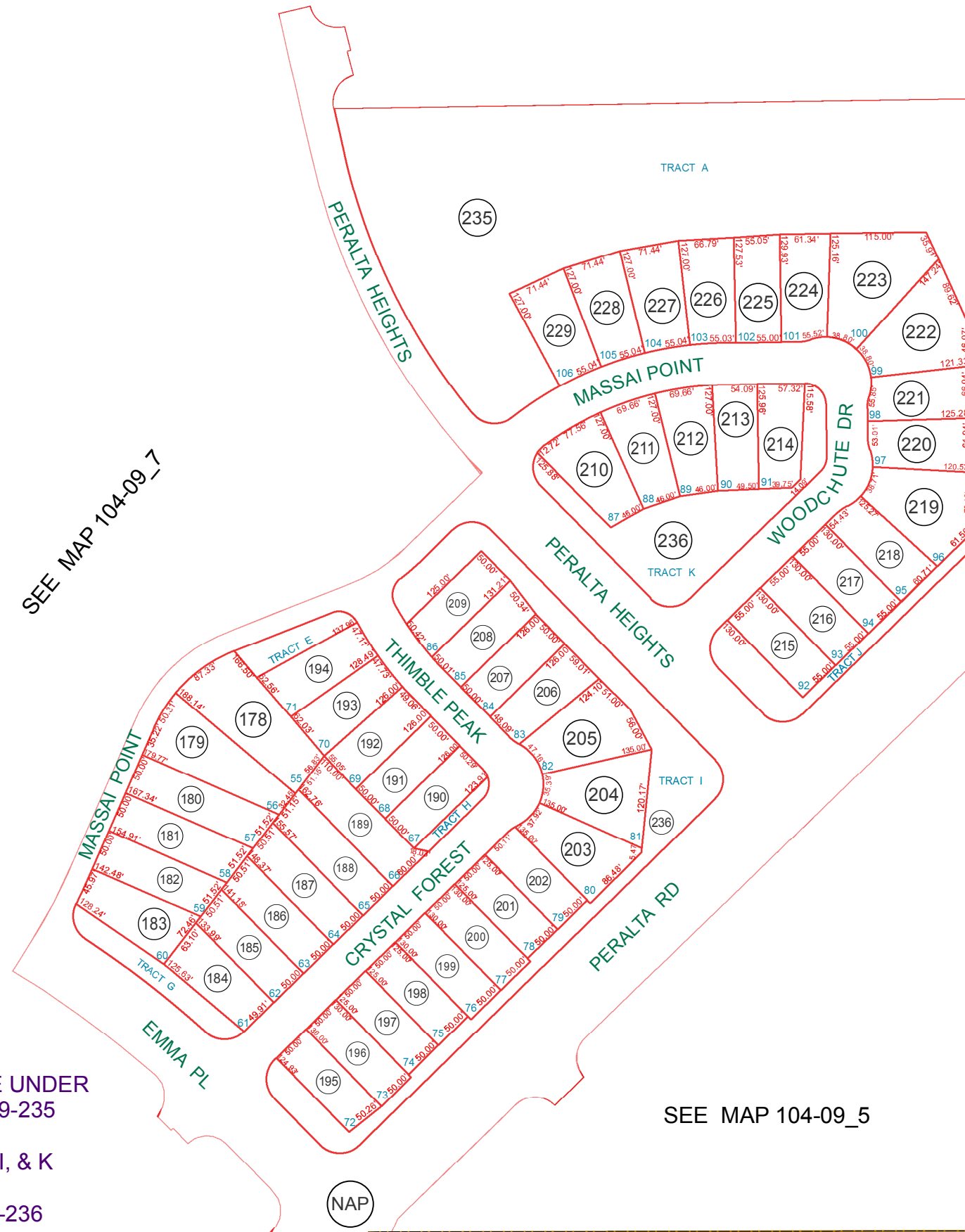


SEE MAP 104-09\_4

SEE MAP 104-09\_7



SEE MAP 104-09\_5

SEC 16  
EAST QTR  
CORNER

SEE MAP 104-09\_4

TRACTS A, B & J ARE UNDER  
PARCEL # 104-09-235

TRACTS C THRU I, & K  
ARE UNDER  
PARCEL #104-09-236

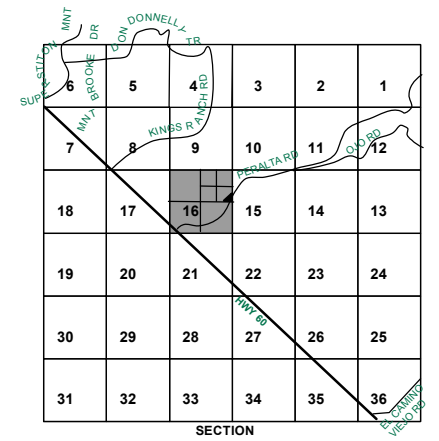
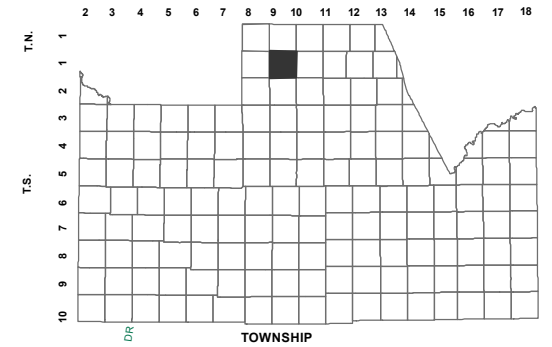
BOOK - MAP

# 104-09\_8

NE SEC. 16 T.01S. R.09E.

PERALTA CANYON  
PARCEL 1: 2017-055293

LOCATION MAPS  
R.E.



Revised: 10/31/2017

By: **YL**



**PINAL COUNTY**

WIDE OPEN OPPORTUNITY

Pinal County Assessor

THIS MAP DOES NOT REPRESENT A SURVEY. NO LIABILITY IS ASSUMED FOR THE ACCURACY OF THE DATA DELINEATED HEREIN, EITHER EXPRESSED OR IMPLIED BY PINAL COUNTY OR ITS EMPLOYEES. THIS MAP IS COMPILED FROM OFFICIAL RECORDS, INCLUDING PLATS, SURVEYS, RECORDED DEEDS AND CONTRACTS, AND ONLY CONTAINS INFORMATION REQUIRED FOR THE PINAL COUNTY ASSESSOR'S OFFICE PURPOSES.

SEE MAP 104-09\_1