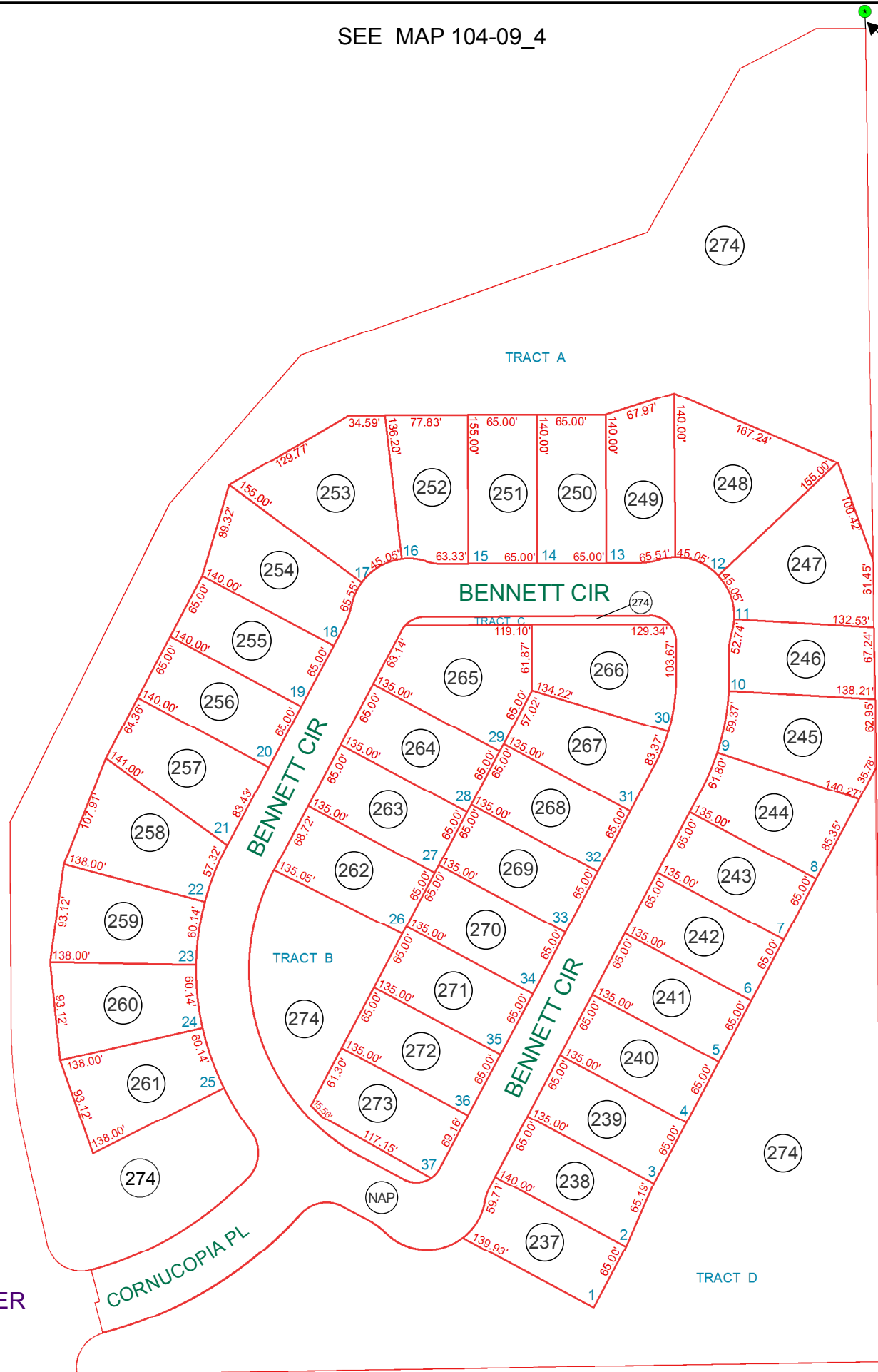


SEE MAP 104-09\_4

NE CORNER  
SEC 16  
24 FEET



SEE MAP 104-09\_4

SEE MAP 104-09\_1

TRACTS A THRU D ARE UNDER  
PARCEL # 104-09-274

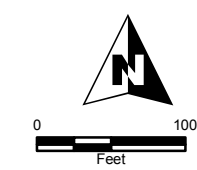
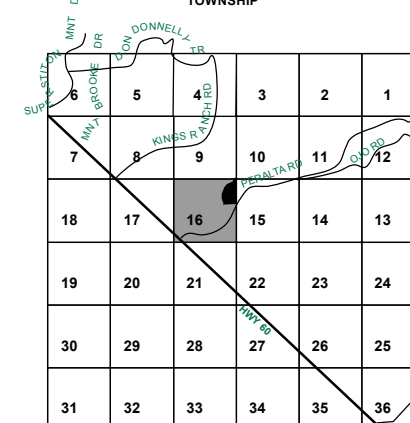
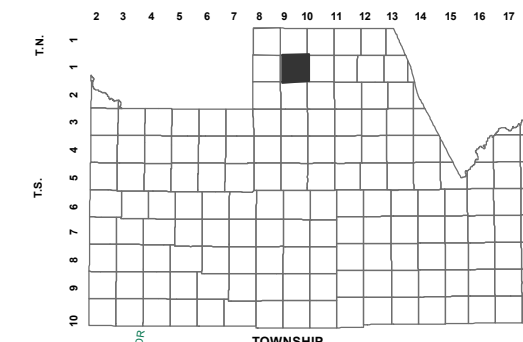
SEE MAP 104-09\_8

BOOK - MAP

# 104-09\_9

NE NE SEC. 16 T.01S. R.09E.  
PERALTA CANYON PARCEL 4:  
2017-055296

LOCATION MAPS  
R.E.



Revised: 11/15/2017  
By: YL



**PINAL COUNTY**  
WIDE OPEN OPPORTUNITY  
Pinal County Assessor

THIS MAP DOES NOT REPRESENT A SURVEY. NO LIABILITY IS ASSUMED FOR THE ACCURACY OF THE DATA DELINEATED HEREIN, EITHER EXPRESSED OR IMPLIED BY PINAL COUNTY OR ITS EMPLOYEES. THIS MAP IS COMPILED FROM OFFICIAL RECORDS, INCLUDING PLATS, SURVEYS, RECORDED DEEDS AND CONTRACTS, AND ONLY CONTAINS INFORMATION REQUIRED FOR THE PINAL COUNTY ASSESSOR'S OFFICE PURPOSES.