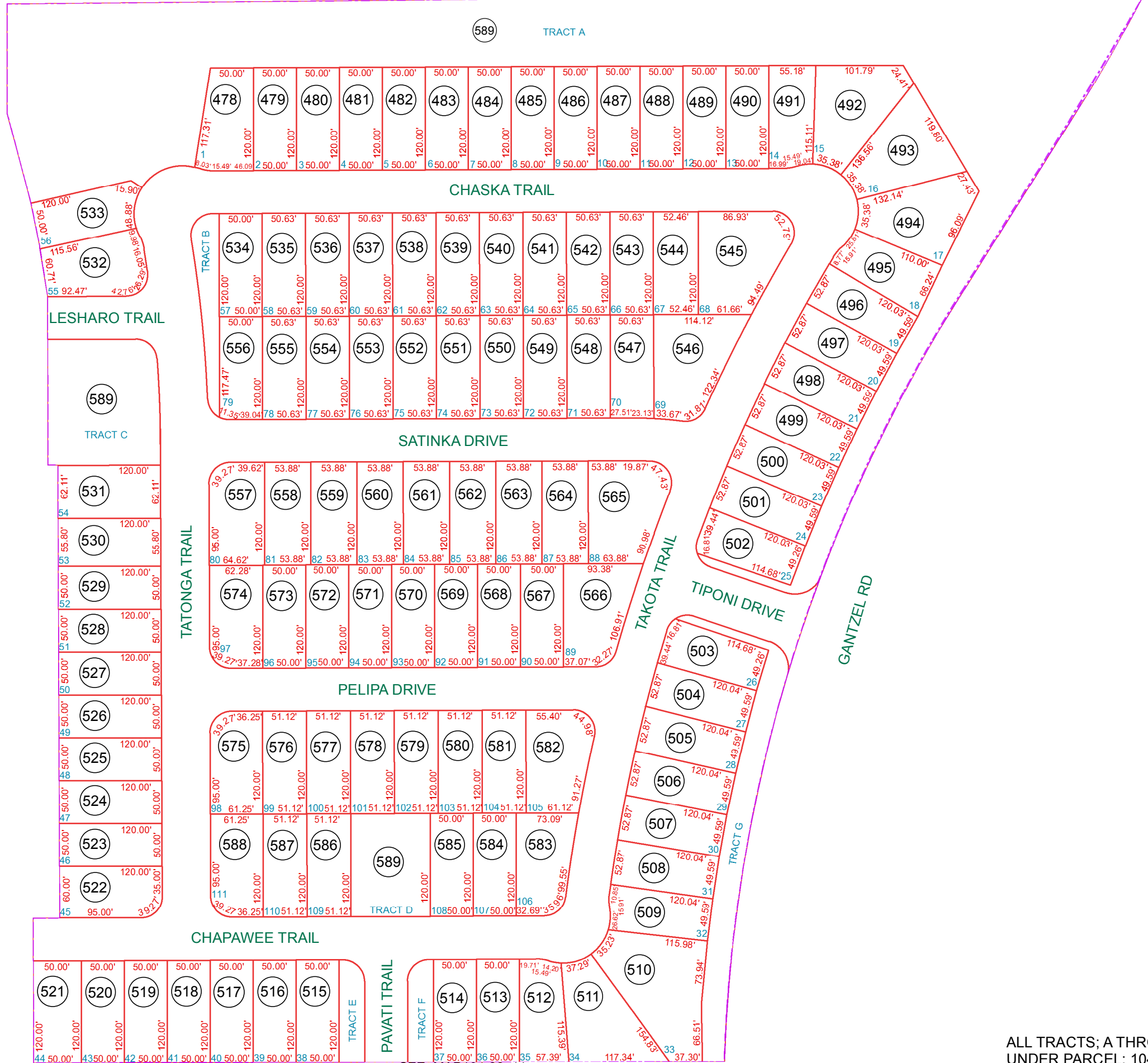


SEE MAP 104-22\_2

SEE MAP 104-22\_12



SEE MAP 104-22\_11

ALL TRACTS; A THROUGH G UNDER PARCEL: 104-22-589

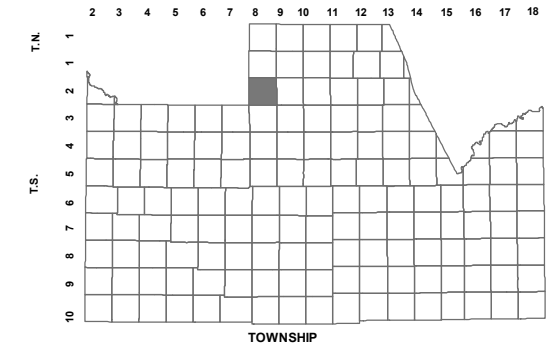
BOOK - MAP

# 104-22\_14

SE SEC. 31 T.02S. R.08E.

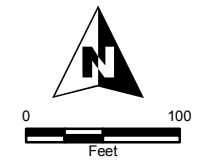
CIRCLE CROSS UNIT 3-PARCEL 4:  
2017-060928

LOCATION MAPS  
R.E.



6	5	4	3	2	1
7	8	9	10	11	12
18	17	16	15	14	13
19	20	21	22	23	24
30	29	28	27	26	25
31	32	33	34	35	36

SECTION



Revised: 2/13/2018

By: DW



**PINAL COUNTY**  
WIDE OPEN OPPORTUNITY

Pinal County Assessor

THIS MAP DOES NOT REPRESENT A SURVEY. NO LIABILITY IS ASSUMED FOR THE ACCURACY OF THE DATA DELINEATED HEREIN, EITHER EXPRESSED OR IMPLIED BY PINAL COUNTY OR ITS EMPLOYEES. THIS MAP IS COMPILED FROM OFFICIAL RECORDS, INCLUDING PLATS, SURVEYS, RECORDED DEEDS AND CONTRACTS, AND ONLY CONTAINS INFORMATION REQUIRED FOR THE PINAL COUNTY ASSESSOR'S OFFICE PURPOSES.

SEE MAP 104-22\_2