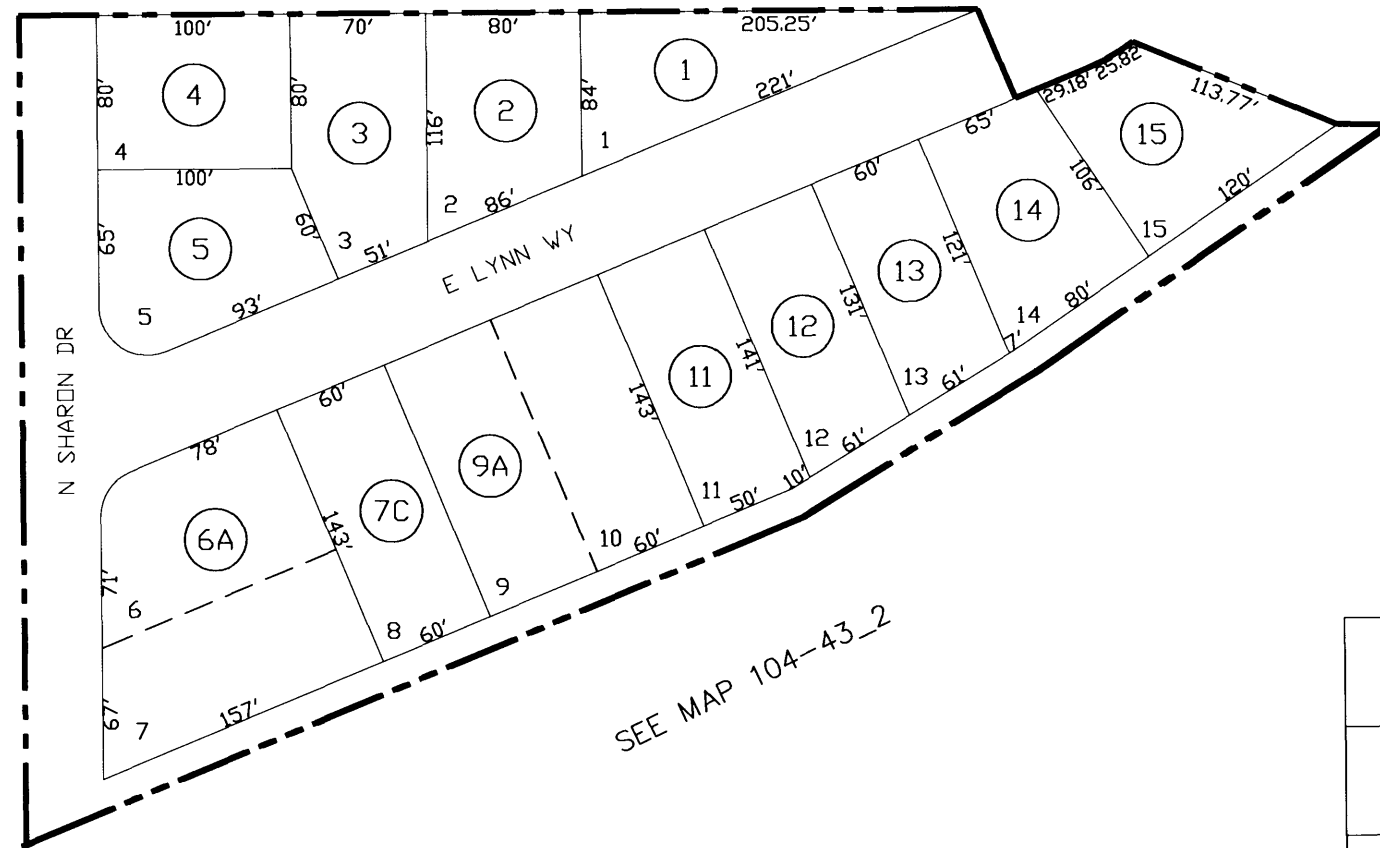


SEE MAP 104-41

SEE MAP 104-16



SEE MAP 104-43\_2

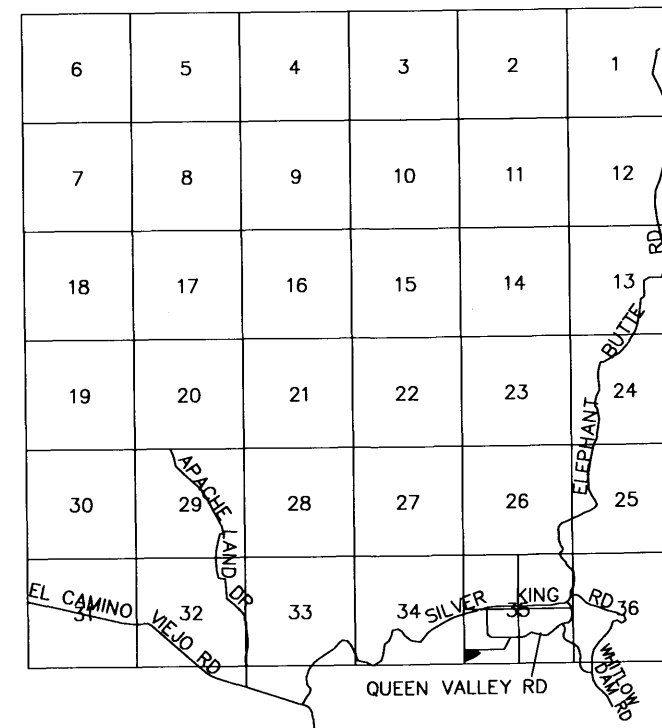
THE ORIGINAL PLAT OF THIS SUBDIVISION IS ON FILE WITH THE PINAL COUNTY RECORDERS OFFICE, FOR COMPLETE INFORMATION OF PLAT AND CC&R's CALL (520) 868-7100.

THIS MAP IS FOR TAX PURPOSES ONLY.

THIS OFFICE WILL NOT ASSUME LIABILITY FOR REPRESENTATION, MEASUREMENTS OR ACREAGE.



VICINITY MAP



SCALE: 1" = 100'

03-31-2005