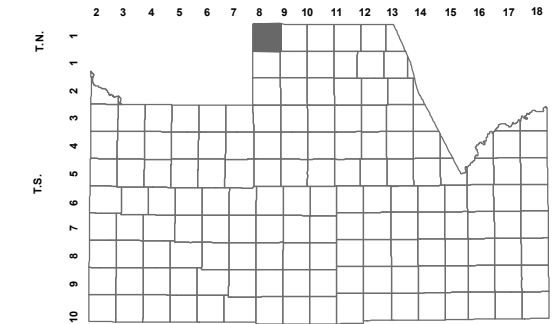


103-20_2

PORTION OF NW SW SEC. 27 T.01N. R.08E.

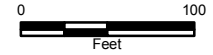
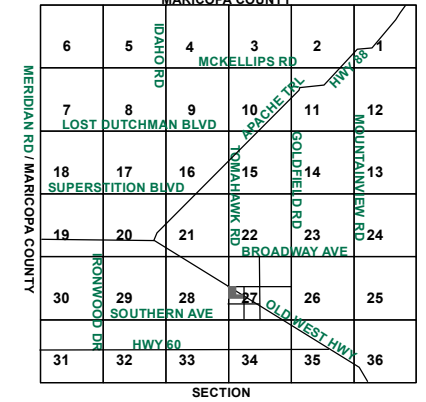
BEL AGAVE SUBDIVISION: 2016-029731

LOCATION MAPS
R.E.



TOWNSHIP

MARICOPA COUNTY



Revised: 10/14/2016

By: MBG



PINAL COUNTY
wide open opportunity

Pinal County Assessor

THIS MAP DOES NOT REPRESENT A SURVEY. NO LIABILITY IS ASSUMED FOR THE ACCURACY OF THE DATA DELINEATED HEREIN, EITHER EXPRESSED OR IMPLIED BY PINAL COUNTY OR ITS EMPLOYEES. THIS MAP IS COMPILED FROM OFFICIAL RECORDS, INCLUDING PLATS, SURVEYS, RECORDED DEEDS AND CONTRACTS, AND ONLY CONTAINS INFORMATION REQUIRED FOR THE PINAL COUNTY ASSESSOR'S OFFICE PURPOSES.

WEST 1/4 CORNER

SEE MAP 103-19

SEE MAP 103-20_1

ALL TRACTS (A THROUGH N) ARE UNDER PARCEL: 103-20-140
 NOTE TRACT N IS A PRIVATE RIGHT OF WAY

CITY OF AJ PER PLAT 2016-029731

CITY OF AJ PER PLAT 2016-029731

SEE MAP 103-20_1

SEE MAP 102-07_1

SEE MAP 103-20_1

