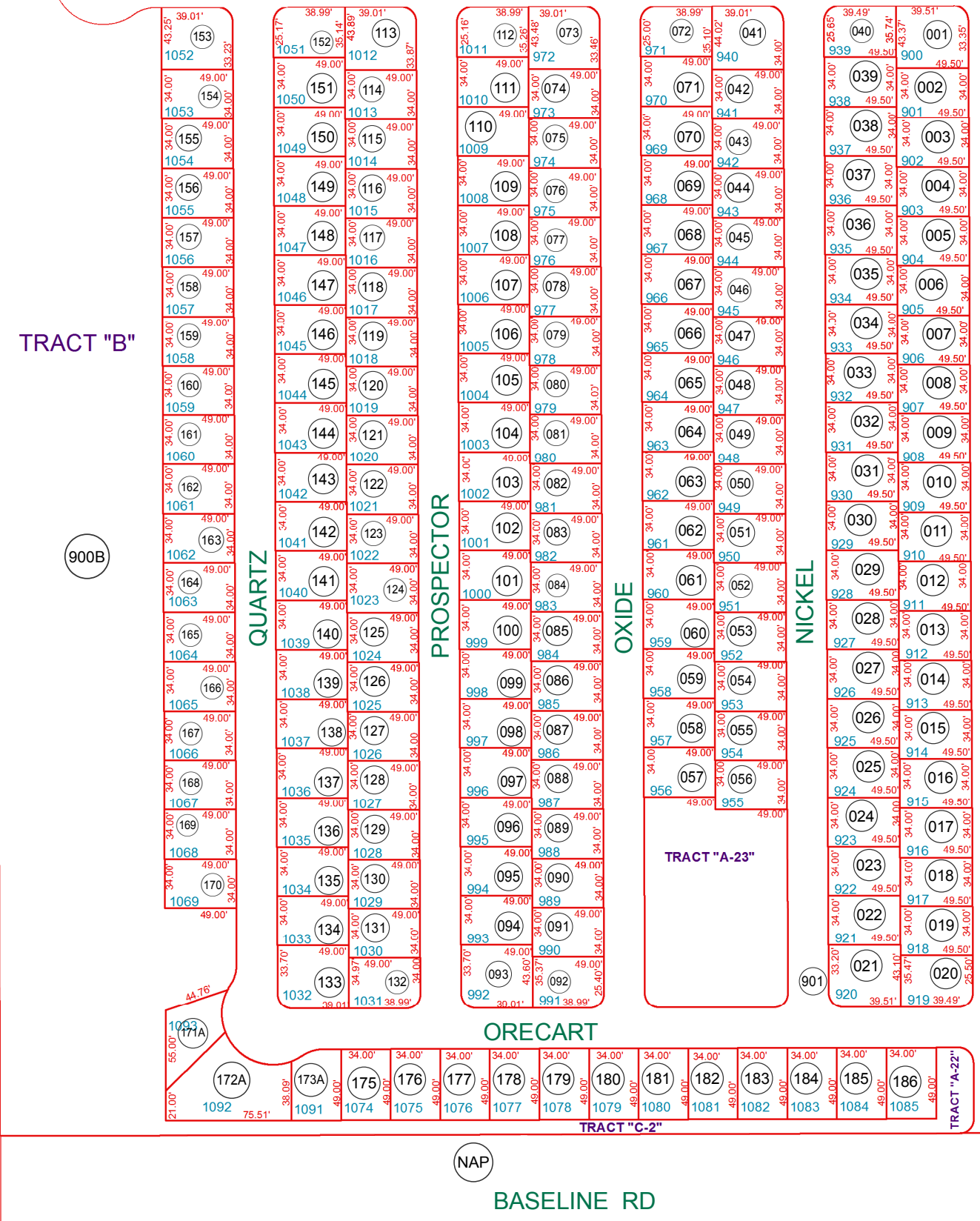


TRACT "D" ALL PRIVATE ROADS
IS UNDER APN 103-35-901

TRACTS A-1 THRU A-9 AND A-11 THRU A-24 & TRACT B, C-1, & C2
ARE UNDER APN 103-35-900B

SEE MAP 103-35_2
NIGHTDIGGER



SEE MAP 103-22

SEE MAP 103-35_1

SEE MAP 104-07

BOOK - MAP

103-36

SE SEC. 34 T.01N. R.08E.

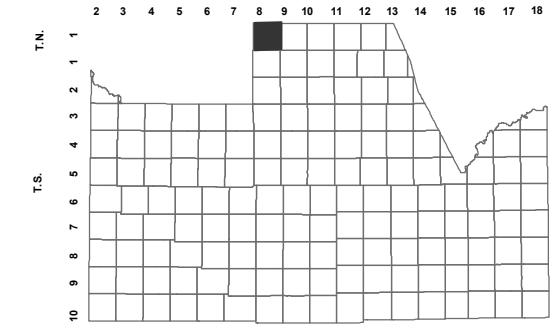
GOLDEN VISTA R.V. RESORT

CAB. A - SLD. 159

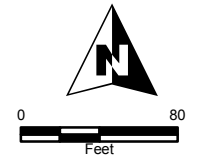
GOLDEN VISTA R.V. RESORT AMD.

CAB. B - SLD. 090

LOCATION MAPS
R.E.



6	5	4	3	2	1
MCKELLIPS RD	IDAHO RD	TOMAHAWK RD	GOLDFIELD RD		
7	8	9	10	11	12
LOST DUTCHMAN BLVD	HWY 205	SUPERSTITION BLVD	MTN VIEW RD		
18	17	16	15	14	13
APACHE TRAIL	21	22	23	24	
19	20	BROADWAY AVE			
30	29	28	27	26	25
IRGNWOOD DR	SOUTHERN AVE	OLD WEST HWY			
31	32	33	34	35	36
	US 60				



Revised: 2/10/2016

By: **TH**



PINAL COUNTY
wide open opportunity

Pinal County Assessor

THIS MAP DOES NOT REPRESENT A SURVEY. NO LIABILITY IS ASSUMED FOR THE ACCURACY OF THE DATA DELINEATED HEREIN, EITHER EXPRESSED OR IMPLIED BY PINAL COUNTY OR ITS EMPLOYEES. THIS MAP IS COMPILED FROM OFFICIAL RECORDS, INCLUDING PLATS, SURVEYS, RECORDED DEEDS AND CONTRACTS, AND ONLY CONTAINS INFORMATION REQUIRED FOR THE PINAL COUNTY ASSESSOR'S OFFICE PURPOSES.