

103-39

SEC. 34 TN.01N RG.08E

SEE MAP 103-22

AREA CODE
4321

SPECIAL DISTRICTS
24002

THIS MAP IS FOR TAX PURPOSES ONLY.
THIS OFFICE WILL NOT ASSUME LIABILITY FOR
REPRESENTATION, MEASUREMENTS OR ACREAGE.

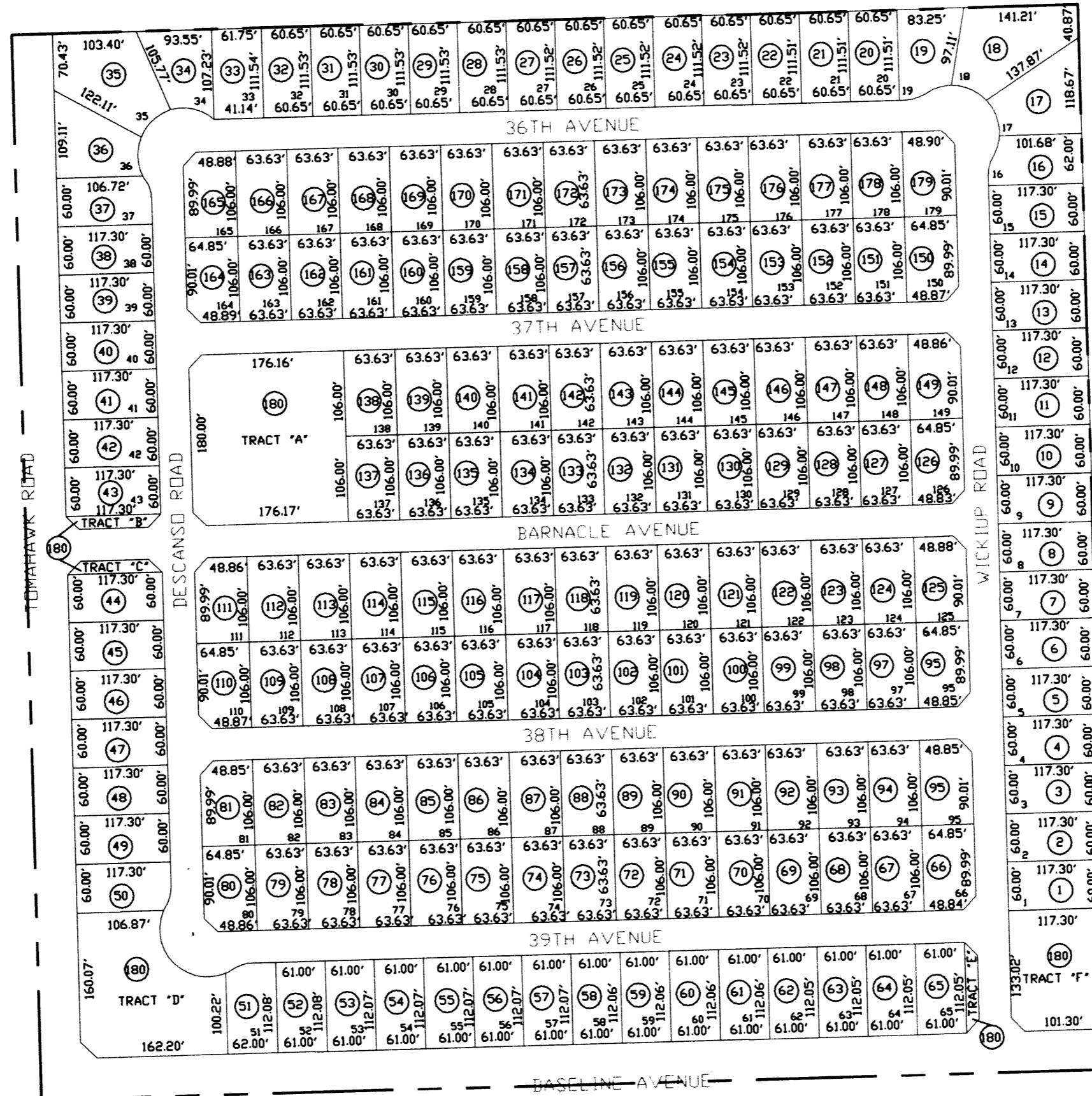
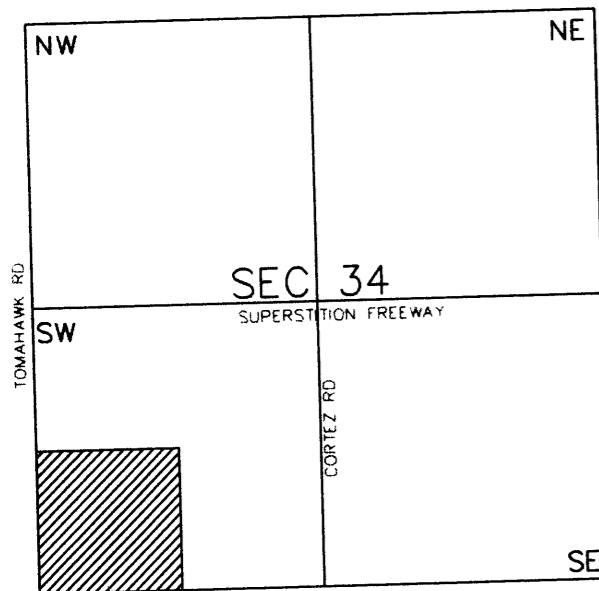
TOMAHAWK CAB "C" SLIDE 150

SEE MAP 102-20

SEE MAP 103-37

THE ORIGINAL PLAT OF THIS SUBDIVISION IS
ON FILE WITH THE PINAL COUNTY RECORDERS
OFFICE, FOR COMPLETE INFORMATION OF PLAT
AND CC&R's CALL (520) 868-7100.

VICINITY MAP



SCALE: 1" = 150'

08-04-2000

PINAL COUNTY ASSESSORS MAP

SEE MAP 104-07