

SEC. 28, PT-S/2, TN.1N RG.8E

102-06

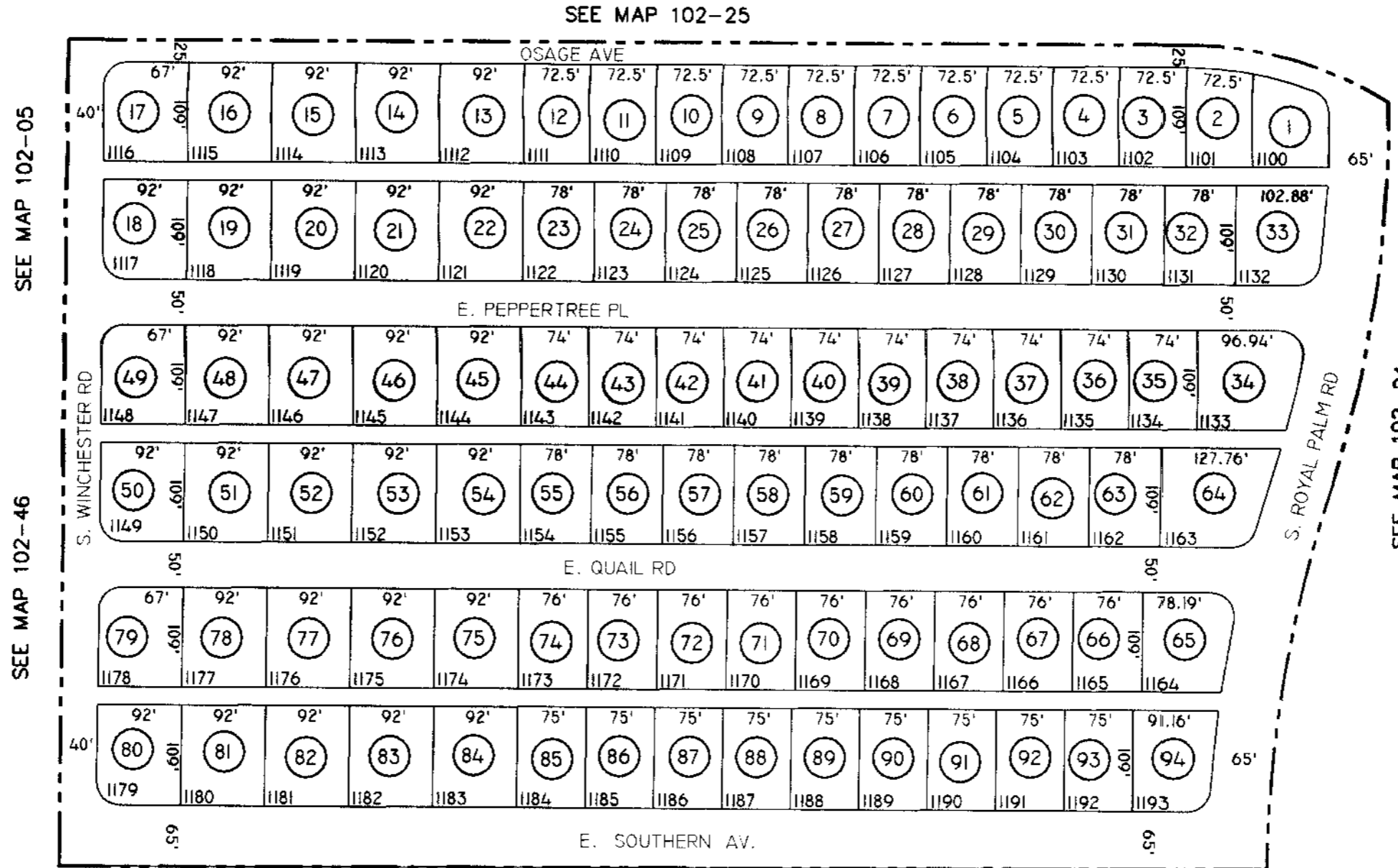
PALM SPRINGS, UNIT 11

BK.14 - PG.06

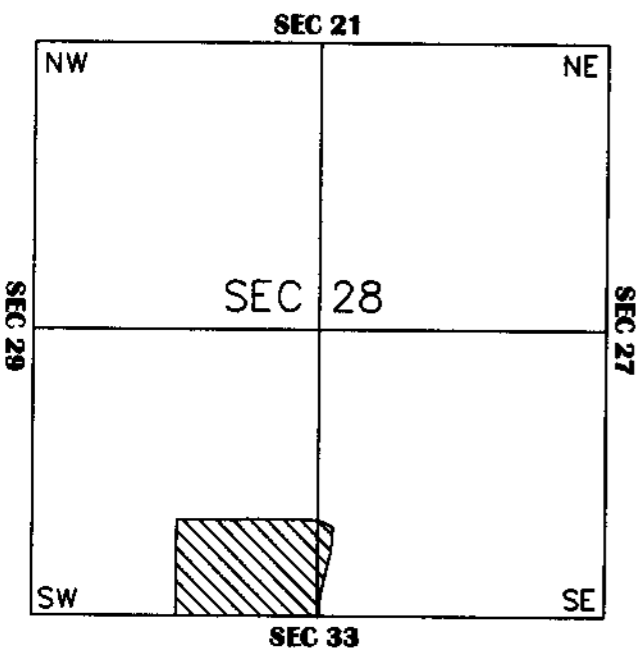
THE ORIGINAL PLAT OF THIS SUBDIVISION IS ON FILE WITH THE PINAL COUNTY RECORDERS OFFICE, FOR COMPLETE INFORMATION OF PLAT AND CC&R'S CALL (520) 868-7100.

THIS MAP IS FOR TAX PURPOSES ONLY.

THIS OFFICE WILL NOT ASSUME LIABILITY FOR REPRESENTATION, MEASUREMENTS OR ACREAGE.



VICINITY MAP



SCALE: 1" = 150'

1-25-2001