

SEC. 30, PT-NE, NE, TN.1N RG.8E

102-12

SEE MAP 101-09 2/2

MARA HEIGHTS

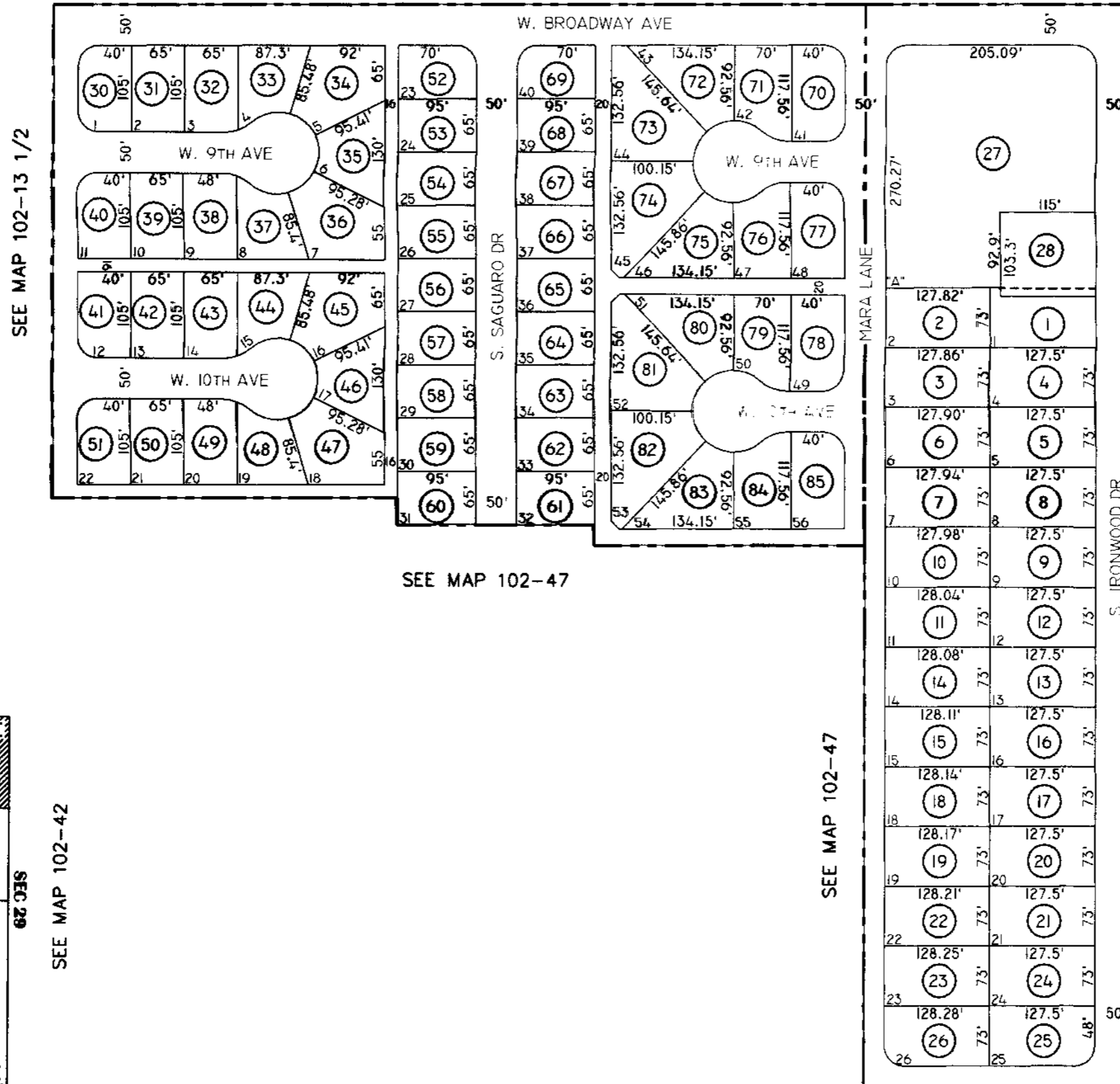
BK.10 - PG.03

CLEARVIEW

BK.16 - PG.08

THE ORIGINAL PLAT OF THIS SUBDIVISION IS ON FILE WITH THE PINAL COUNTY RECORDERS OFFICE, FOR COMPLETE INFORMATION OF PLAT AND CC&M'S CALL (520) 866-7100.

THIS MAP IS FOR TAX PURPOSES ONLY.
THIS OFFICE WILL NOT ASSUME LIABILITY FOR REPRESENTATION, MEASUREMENTS OR ACREAGE.



SEE MAP 102-13 1/2

SEE MAP 102-47

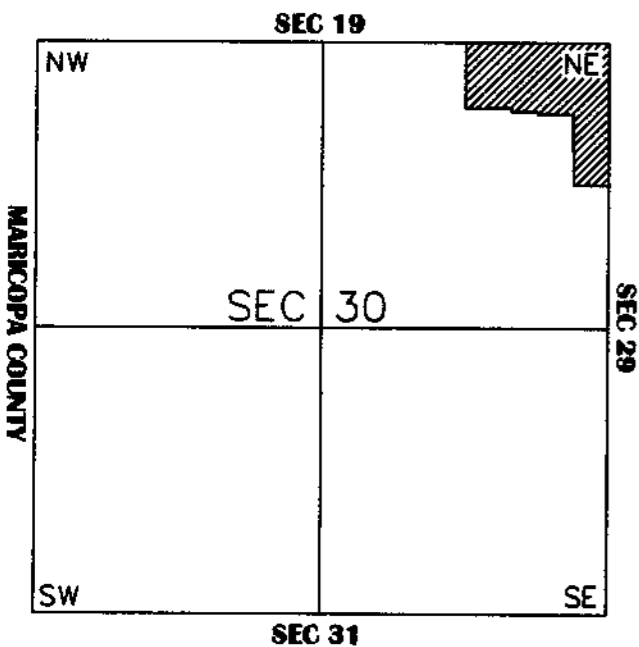
SEE MAP 102-47

SEE MAP 102-08

SEE MAP 102-38

SEE MAP 102-32

VICINITY MAP



SEE MAP 102-42



SCALE: 1" = 150'

1-29-2001