

# SEC. 28, PT-S/2, TN.1N RG.8E

# 102-25

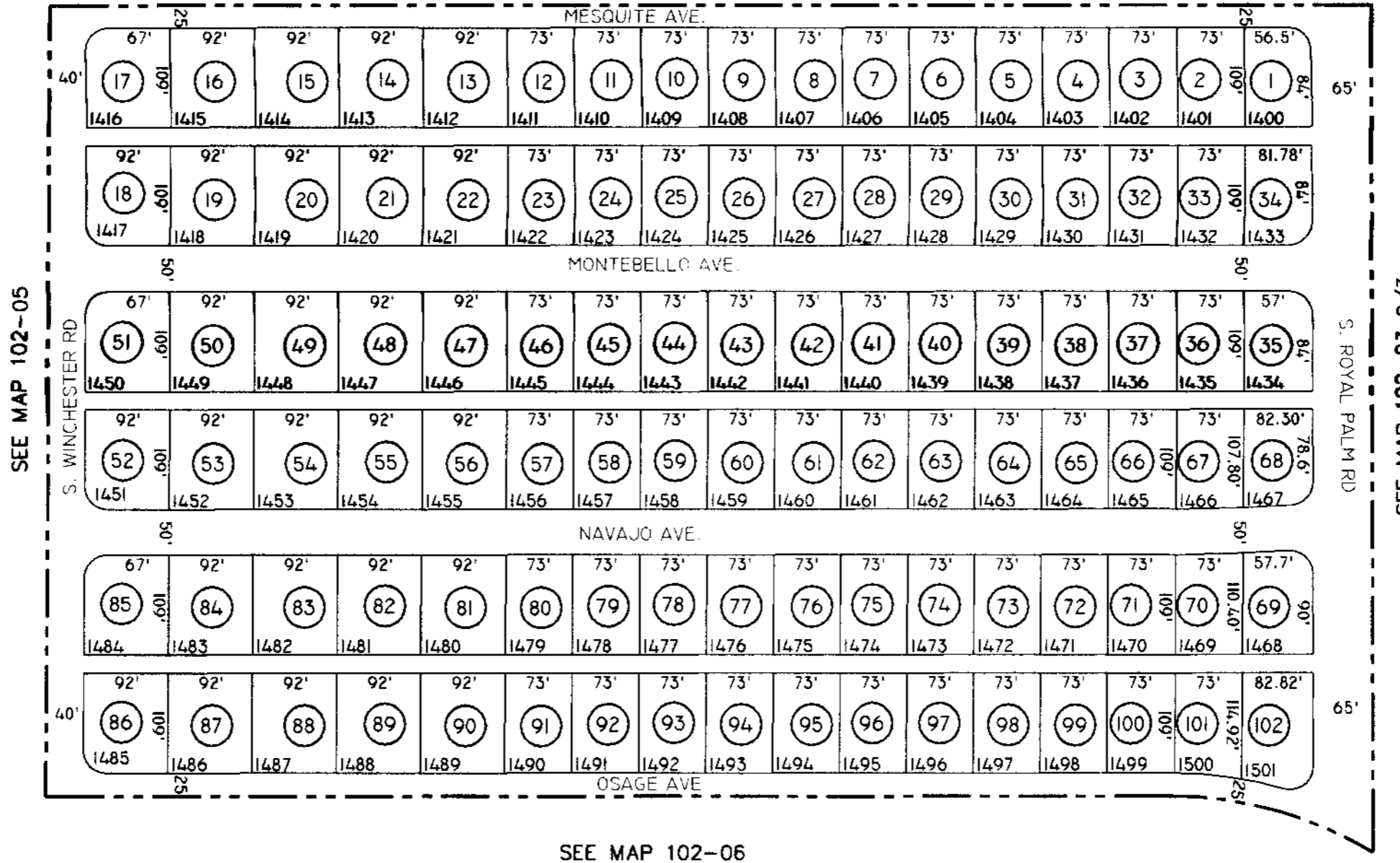
**PALM SPRINGS, UNIT 14**  
**BK.14 - PG.08**

THE ORIGINAL PLAT OF THIS SUBDIVISION IS ON FILE WITH THE PINAL COUNTY RECORDERS OFFICE, FOR COMPLETE INFORMATION OF PLAT AND CC&R'S CALL (520) 869-7100.

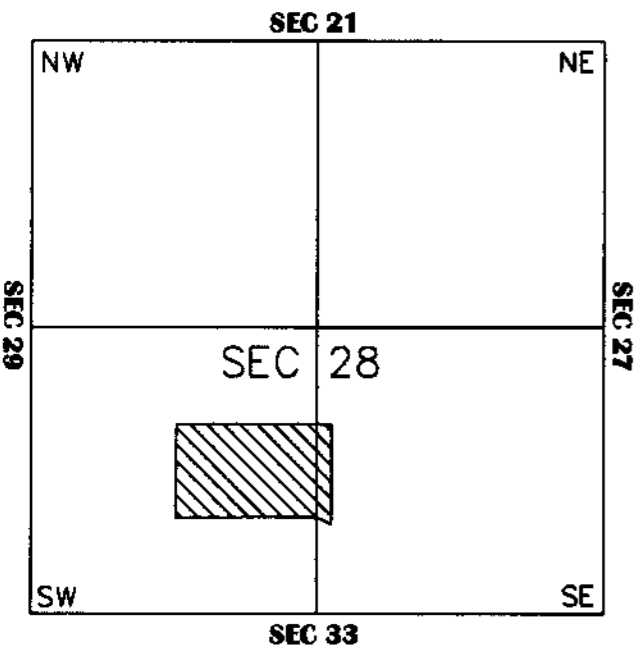
THIS MAP IS FOR TAX PURPOSES ONLY.

THIS OFFICE WILL NOT ASSUME LIABILITY FOR REPRESENTATION, MEASUREMENTS OR ACREAGE.

SEE MAP 102-26



## VICINITY MAP



SEE MAP 102-03 2/3



SCALE: 1" = 150'

1-25-2001