

SEC. 33, NE, NE, TN.1N RG.8E

SEE MAP 102-07 2/2

102-27 1/2

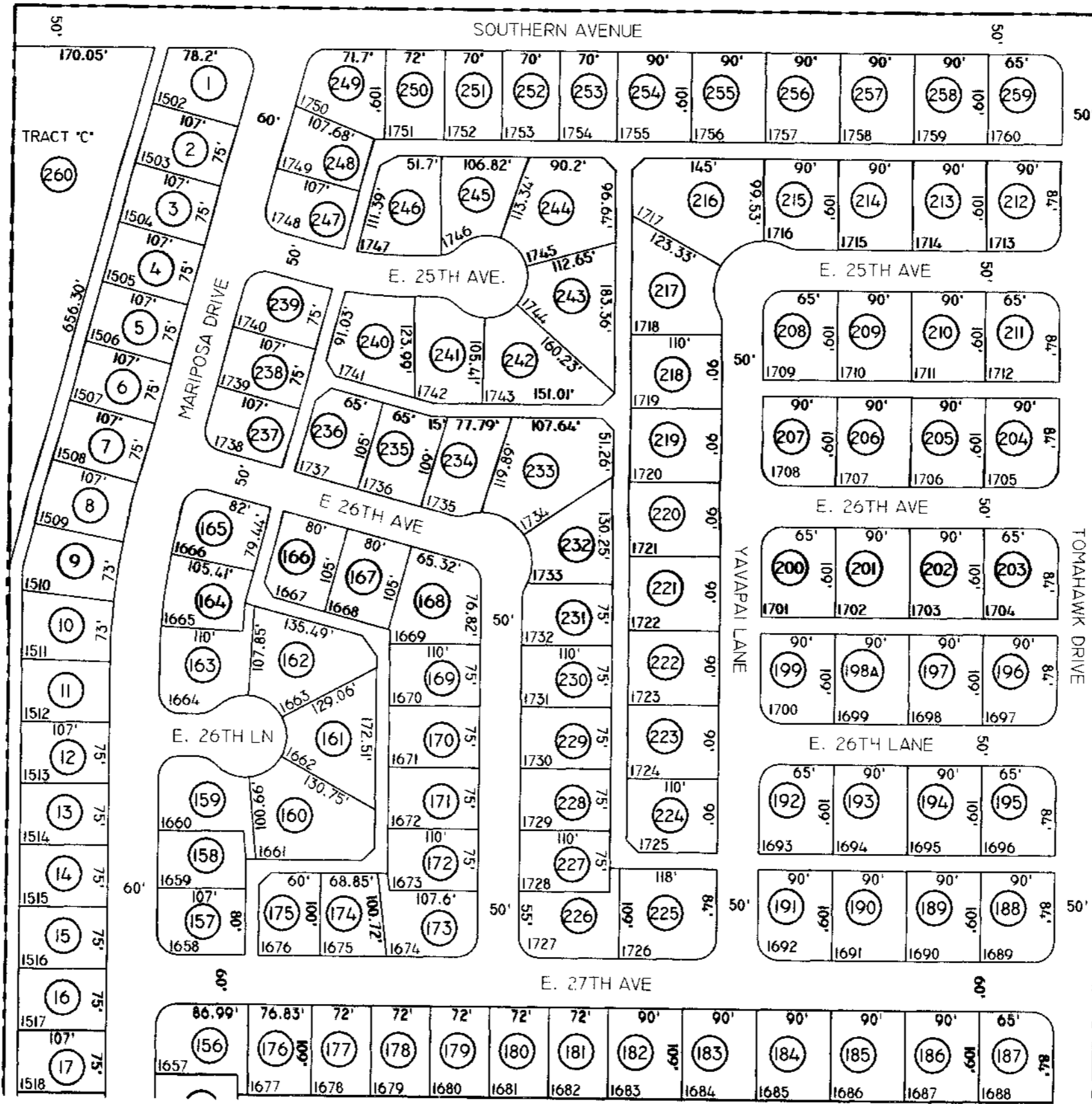
PALM SPRINGS, UNIT 15 BK.15 - PG.08

THE ORIGINAL PLAT OF THIS SUBDIVISION IS ON FILE WITH THE PINAL COUNTY RECORDERS OFFICE, FOR COMPLETE INFORMATION OF PLAT AND C&M's CALL (520) 868-7100.

THIS MAP IS FOR TAX PURPOSES ONLY.

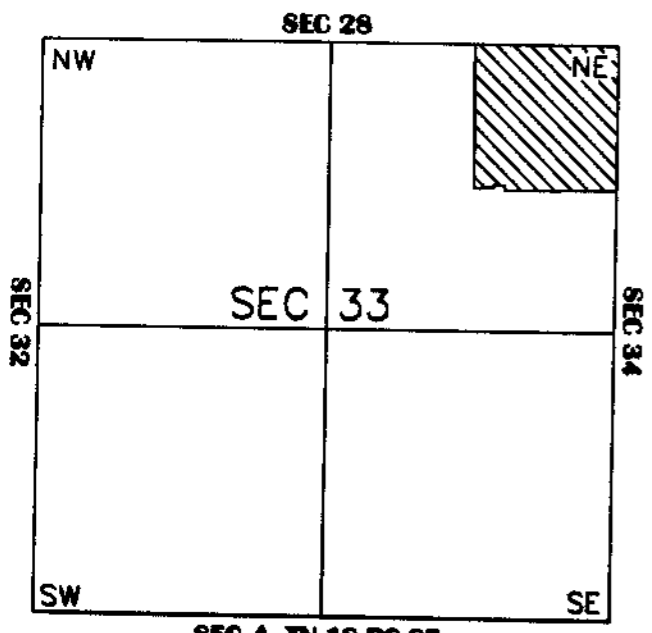
THIS OFFICE WILL NOT ASSUME LIABILITY FOR REPRESENTATION, MEASUREMENTS OR ACREAGE.

SEE MAP 102-20



SEE MAP 103-22

VICINITY MAP



SEE MAP 102-27 2/2



SCALE: 1" = 150'

1-25-2001