

SEC. 28, PT-S/2, TN.1N RG.8E

102-26

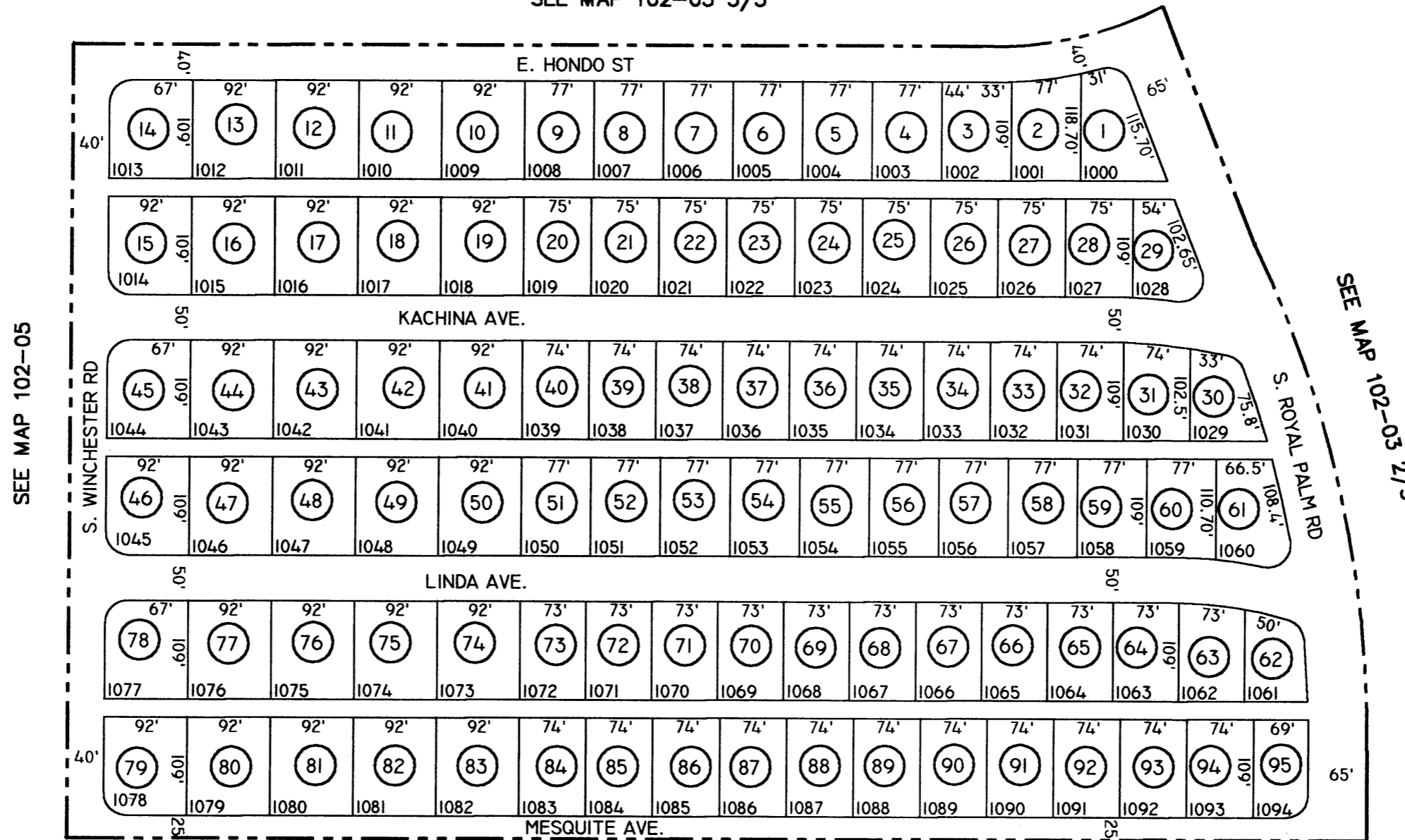
THE ORIGINAL PLAT OF THIS SUBDIVISION IS ON FILE WITH THE PINAL COUNTY RECORDERS OFFICE, FOR COMPLETE INFORMATION OF PLAT AND CC&R's CALL (520) 868-7100.

PALM SPRINGS, UNIT 10
BK. 14 PG. 1

THIS MAP IS FOR TAX PURPOSES ONLY.

THIS OFFICE WILL NOT ASSUME LIABILITY FOR REPRESENTATION, MEASUREMENTS OR ACREAGE.

SEE MAP 102-03 3/3

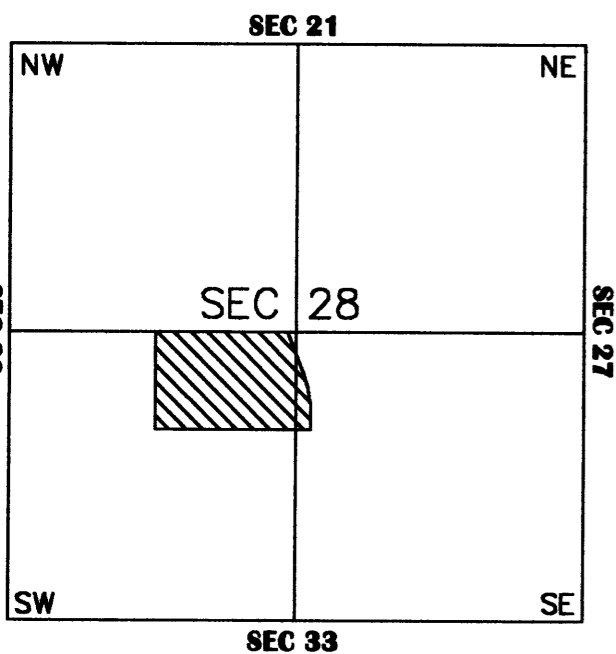


SEE MAP 102-03 2/3

SEE MAP 102-05

SEE MAP 102-25

VICINITY MAP



SCALE: 1" = 150'

05-29-01