

SEC. 28, PT-SW, SE, TN.1N RG.8E

102-24

THE ORIGINAL PLAT OF THIS SUBDIVISION IS ON FILE WITH THE PINAL COUNTY RECORDERS OFFICE, FOR COMPLETE INFORMATION OF PLAT AND CC&R's CALL (520) 868-7100.

PALM SPRINGS, UNIT 12  
BK.14 - PG.07

THIS MAP IS FOR TAX PURPOSES ONLY.

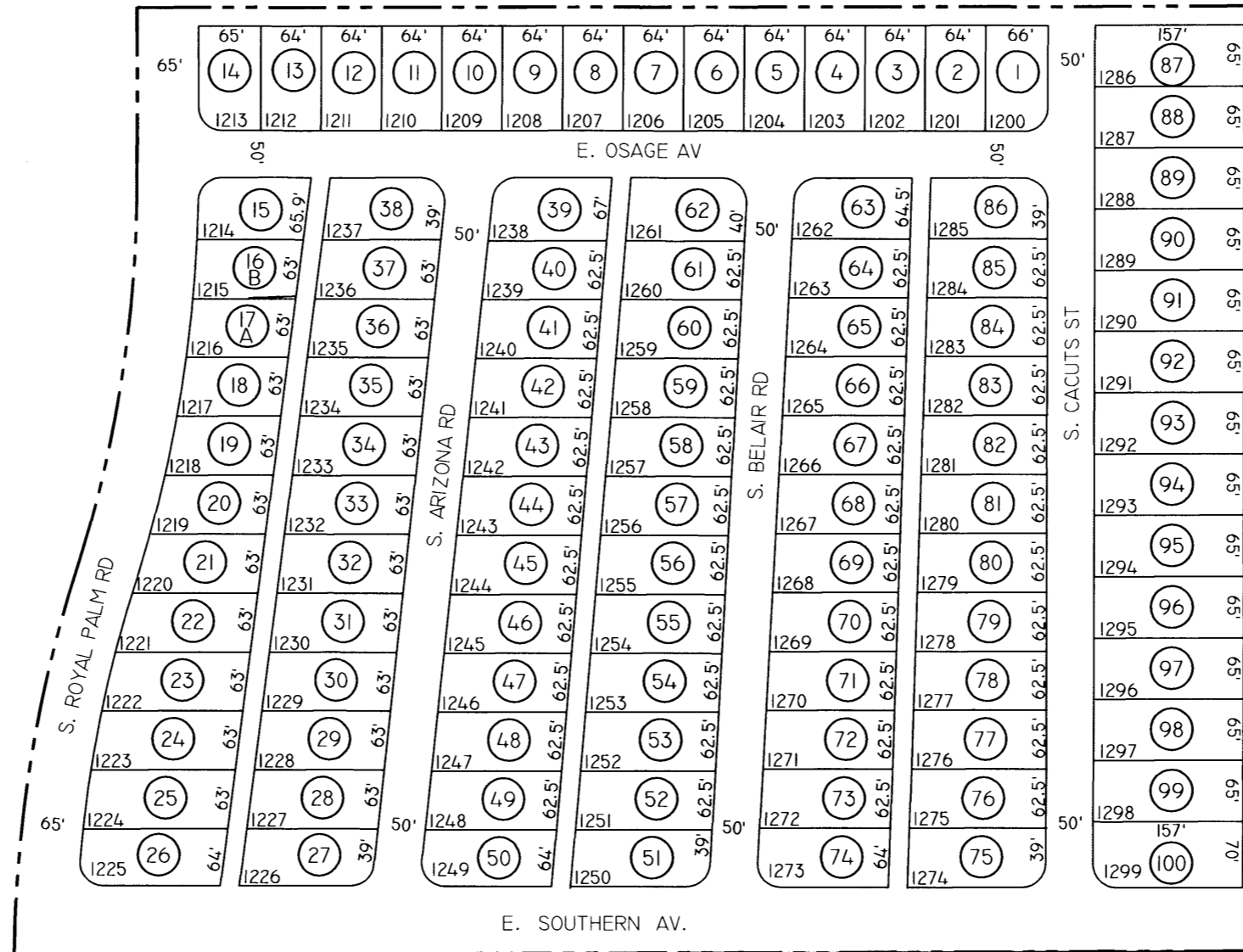
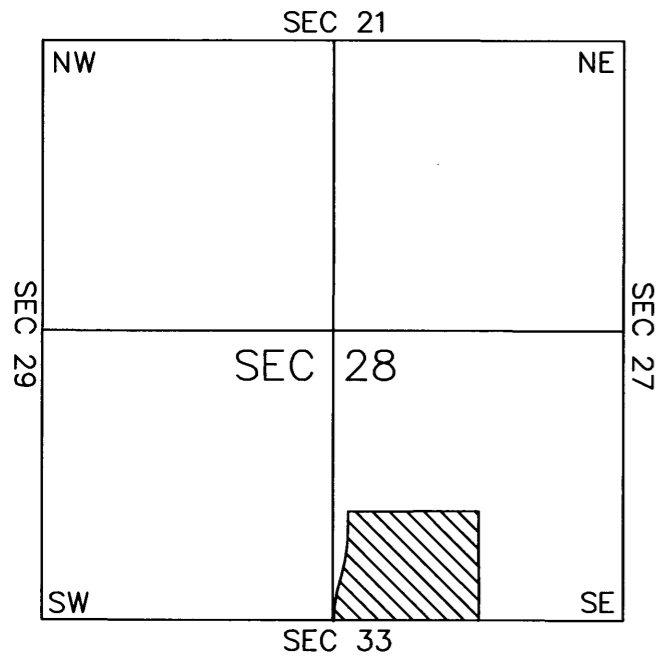
SEE MAP 102-03 2/3

THIS OFFICE WILL NOT ASSUME LIABILITY FOR REPRESENTATION, MEASUREMENTS OR ACREAGE.

SEE MAP 102-06

SEE MAP 102-07 2/2

VICINITY MAP



SEE MAP 102-20



SCALE: 1" = 150'

1-25-2001