

**SEC. 29, SE, SE, NE, TN.1N RG.8E**

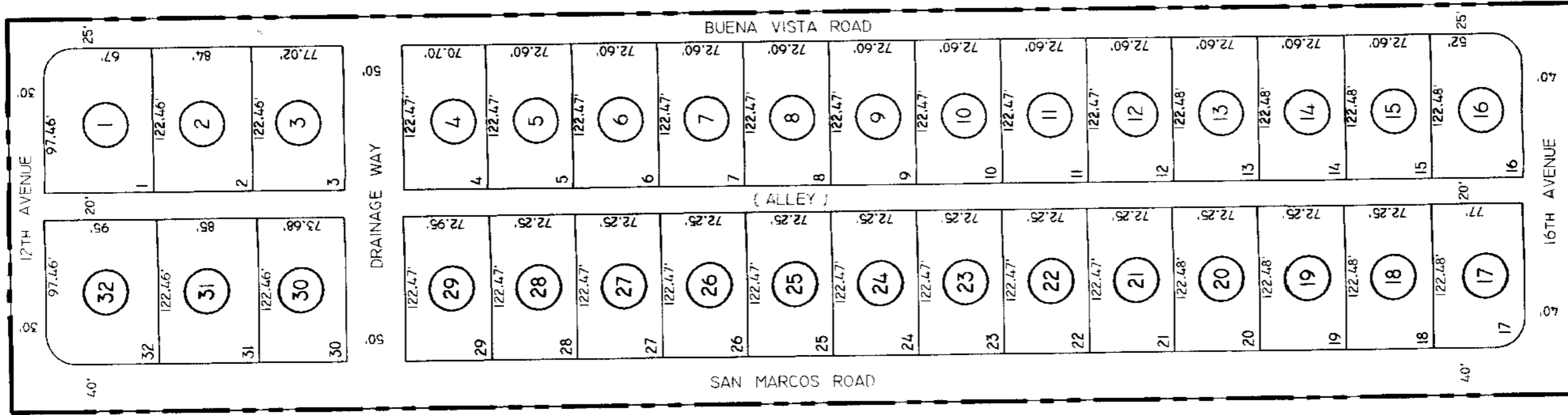
**102-31**

**SAN MARCOS ESTATES  
UNIT 1, AMENDED  
BK.19 - PG.23**

SEE MAP 102-36

SEE MAP 102-08

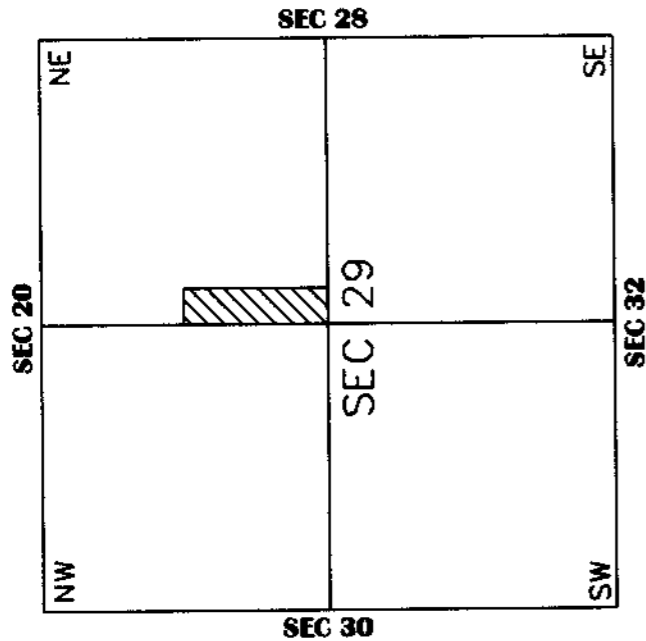
SEE MAP 102-08



SEE MAP 102-22 1/4

SEE MAP 102-48

**VICINITY MAP**



THE ORIGINAL PLAT OF THIS SUBDIVISION IS ON FILE WITH THE PINAL COUNTY RECORDERS OFFICE, FOR COMPLETE INFORMATION OF PLAT AND OWNER'S CALL (520) 868-7196.

THIS MAP IS FOR TAX PURPOSES ONLY. THIS OFFICE WILL NOT ASSUME LIABILITY FOR REPRESENTATION, MEASUREMENTS OR AREA.



SCALE: 1" = 100'

2-8-2001