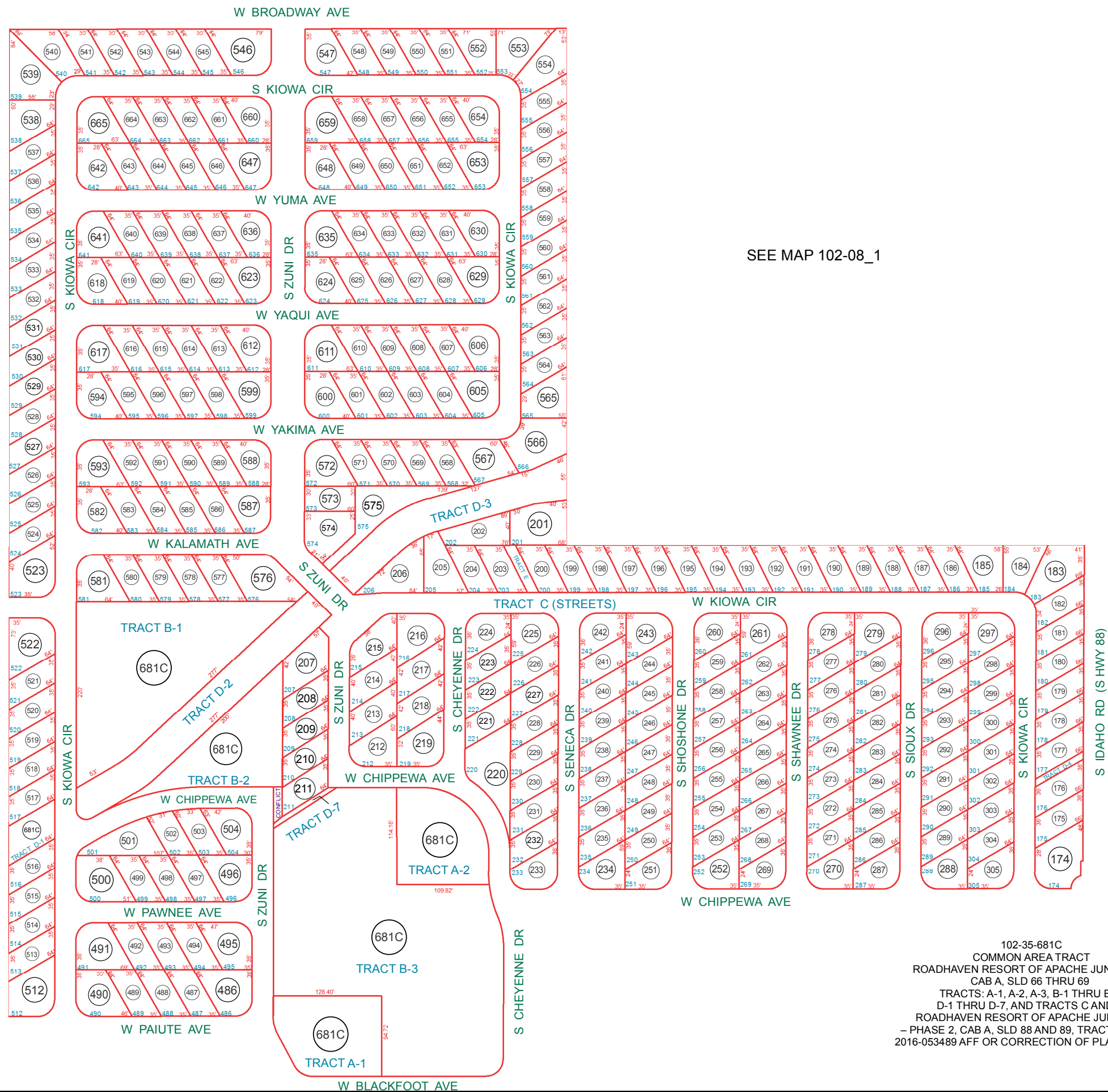


SEE MAP 101-14

SEE MAP 102-08_2

SEE MAP 102-36_1



SEE MAP 102-08_1

SEE MAP 102-04

SEE MAP 102-35_2

BOOK - MAP

102-35_1

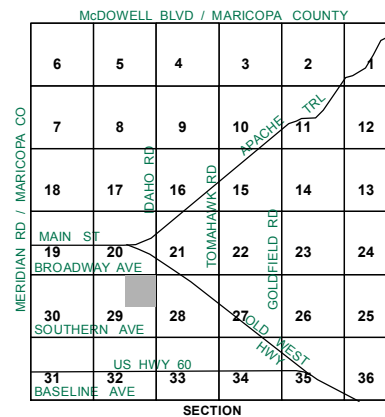
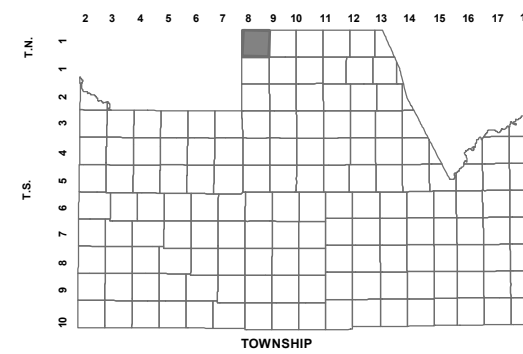
NE SEC. 29 T.01N. R.08E.

ROADHAVEN RESORT OF APACHE JUNCTION
CABINET A, SLIDE 66-69

ROADHAVEN RESORT OF APACHE JUNCTION - PHASE 2
(PLAT AMENDMENT NO. 1)
CABINET B, SLIDE 068

CORRECTION OF PLAT (FOR TRACTS: M & N)
2016-053489

LOCATION MAPS
R.E.



Revised: 5/23/2017

By: YL



PINAL COUNTY
wide open opportunity

Pinal County Assessor

THIS MAP DOES NOT REPRESENT A SURVEY. NO LIABILITY IS ASSUMED FOR THE ACCURACY OF THE DATA DELINEATED HEREIN, EITHER EXPRESSED OR IMPLIED BY PINAL COUNTY OR ITS EMPLOYEES. THIS MAP IS COMPILED FROM OFFICIAL RECORDS, INCLUDING PLATS, SURVEYS, RECORDED DEEDS AND CONTRACTS, AND ONLY CONTAINS INFORMATION REQUIRED FOR THE PINAL COUNTY ASSESSOR'S OFFICE PURPOSES.

102-35-681C
COMMON AREA TRACT
ROADHAVEN RESORT OF APACHE JUNCTION,
CAB A, SLD 66 THRU 69
TRACTS: A-1, A-2, A-3, B-1 THRU B-4,
D-1 THRU D-7, AND TRACTS C AND E;
ROADHAVEN RESORT OF APACHE JUNCTION
- PHASE 2, CAB A, SLD 88 AND 89, TRACTS: J AND K
2016-053489 AFF OR CORRECTION OF PLAT: TRACT N