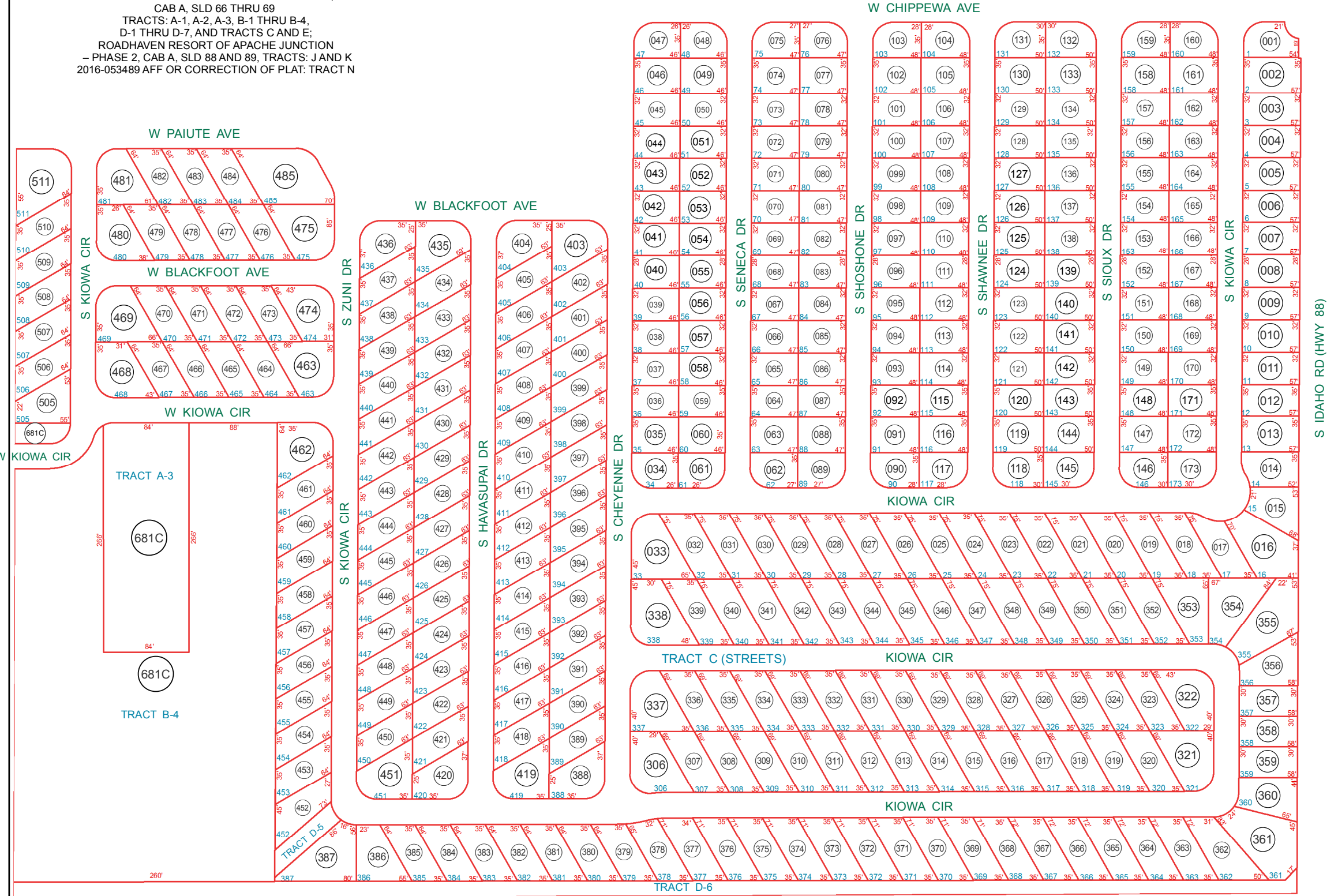


SEE MAP 102-35\_1

102-35-681C  
COMMON AREA TRACT  
ROADHAVEN RESORT OF APACHE JUNCTION,  
CAB A, SLD 66 THRU 69  
TRACTS: A-1, A-2, A-3, B-1 THRU B-4,  
D-1 THRU D-7, AND TRACTS C AND E;  
ROADHAVEN RESORT OF APACHE JUNCTION  
- PHASE 2, CAB A, SLD 88 AND 89, TRACTS: J AND K  
2016-053489 AFF OR CORRECTION OF PLAT: TRACT N

SEE MAP 102-36\_1

SEE MAP 102-36\_2



SEE MAP 102-04

SEE MAP 102-08\_4

SEE MAP 102-30

BOOK - MAP

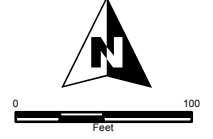
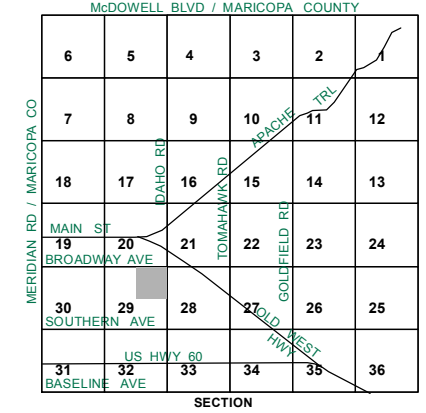
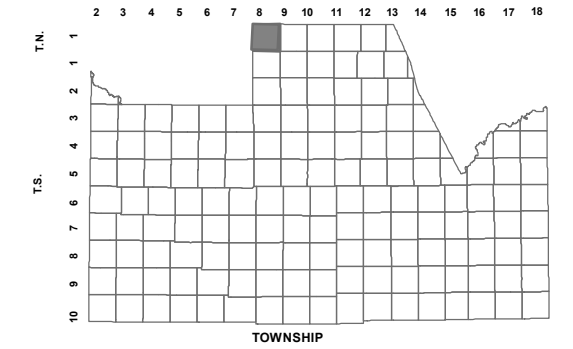
# 102-35\_2

## NE SEC. 29 T.01N. R.08E.

ROADHAVEN RESORT OF APACHE JUNCTION  
CABINET A, SLIDE 66-69

ROADHAVEN RESORT OF APACHE JUNCTION - PHASE 2  
(PLAT AMENDMENT NO. 1)  
CABINET B, SLIDE 068

CORRECTION OF PLAT (FOR TRACTS: M & N)  
2016-053489  
LOCATION MAPS  
R.E.



Revised: 5/23/2017

By: YL



PINAL COUNTY  
*wide open opportunity*

**Pinal County Assessor**

THIS MAP DOES NOT REPRESENT A SURVEY. NO LIABILITY IS ASSUMED FOR THE ACCURACY OF THE DATA DELINEATED HEREIN, EITHER EXPRESSED OR IMPLIED BY PINAL COUNTY OR ITS EMPLOYEES. THIS MAP IS COMPILED FROM OFFICIAL RECORDS, INCLUDING PLATS, SURVEYS, RECORDED DEEDS AND CONTRACTS, AND ONLY CONTAINS INFORMATION REQUIRED FOR THE PINAL COUNTY ASSESSOR'S OFFICE PURPOSES.