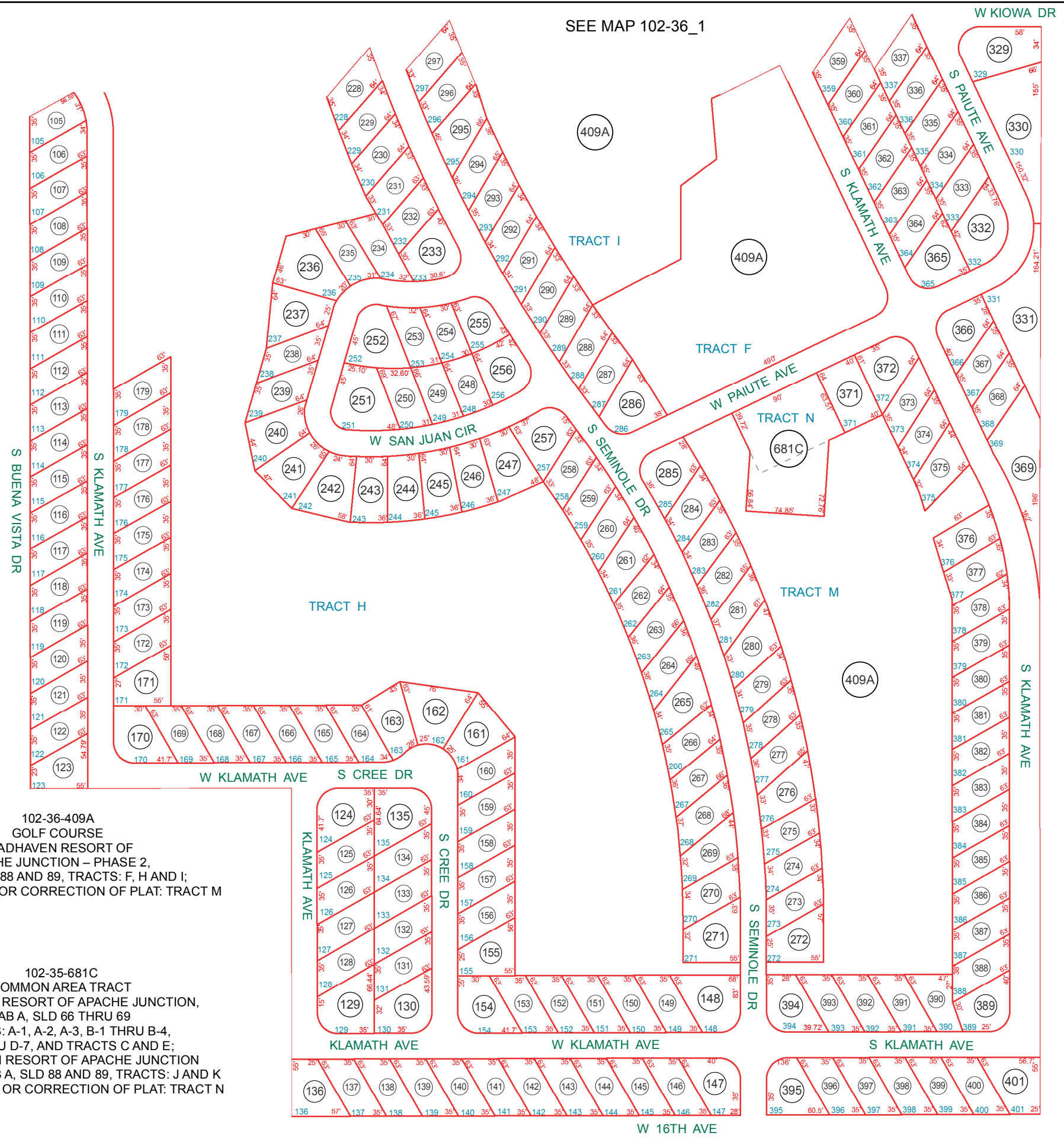


SEE MAP 102-08\_1



102-36-409A  
 GOLF COURSE  
 ROADHAVEN RESORT OF  
 APACHE JUNCTION – PHASE 2,  
 CAB A, SLD 88 AND 89, TRACTS: F, H AND I;  
 2016-053489 AFF OR CORRECTION OF PLAT: TRACT M

102-35-681C  
 COMMON AREA TRACT  
 ROADHAVEN RESORT OF APACHE JUNCTION,  
 CAB A, SLD 66 THRU 69  
 TRACTS: A-1, A-2, A-3, B-1 THRU B-4,  
 D-1 THRU D-7, AND TRACTS C AND E;  
 ROADHAVEN RESORT OF APACHE JUNCTION  
 – PHASE 2, CAB A, SLD 88 AND 89, TRACTS: J AND K  
 2016-053489 AFF OR CORRECTION OF PLAT: TRACT N

SEE MAP 102-22\_1

SEE MAP 102-08\_1

BOOK - MAP

# 102-36\_2

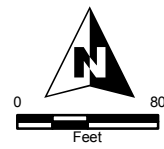
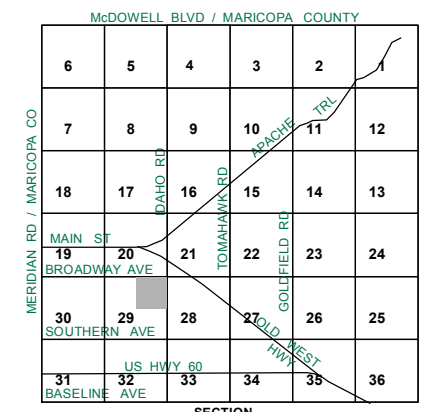
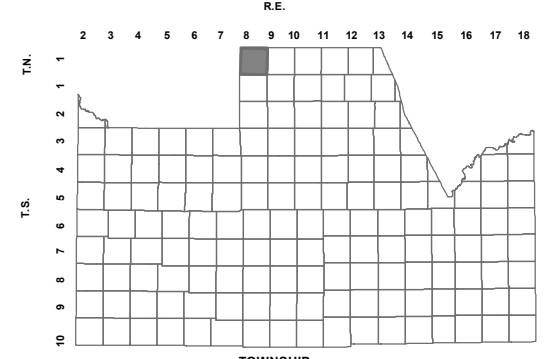
## NE SEC. 29 T.01N. R.08E.

ROADHAVEN RESORT OF APACHE JUNCTION - PHASE 2  
CABINET A, SLIDE 88-89

ROADHAVEN RESORT OF APACHE JUNCTION - PHASE 2  
(PLAT AMENDMENT NO. 1)  
CABINET B, SLIDE 068

CORRECTION OF PLAT (FOR TRACTS: M & N)  
2016-053489

LOCATION MAPS



Revised: 5/19/2017

By: YL



PINAL COUNTY  
wide open opportunity

Pinal County Assessor

THIS MAP DOES NOT REPRESENT A SURVEY. NO LIABILITY IS ASSUMED FOR THE ACCURACY OF THE DATA DELINEATED HEREIN, EITHER EXPRESSED OR IMPLIED BY PINAL COUNTY OR ITS EMPLOYEES. THIS MAP IS COMPILED FROM OFFICIAL RECORDS, INCLUDING PLATS, SURVEYS, RECORDED DEEDS AND CONTRACTS, AND ONLY CONTAINS INFORMATION REQUIRED FOR THE PINAL COUNTY ASSESSOR'S OFFICE PURPOSES.