

SEC. 30, PT-SW, TN.1N RG.8E

SEE MAP 102-18
MERIDIAN MANOR AMD.

102-50

THE ORIGINAL PLAT OF THIS SUBDIVISION IS ON FILE WITH THE PINAL COUNTY RECORDERS OFFICE, FOR COMPLETE INFORMATION OF PLAT AND CC&R's CALL (520) 868-7100.

THIS MAP IS FOR TAX PURPOSES ONLY.

THIS OFFICE WILL NOT ASSUME LIABILITY FOR REPRESENTATION, MEASUREMENTS OR ACREAGE.

MERIDIAN MANOR
CAB. B - SLD.127

MERIDIAN MANOR AMD.
CAB. F - SLD. 014

SEE MAP 102-18

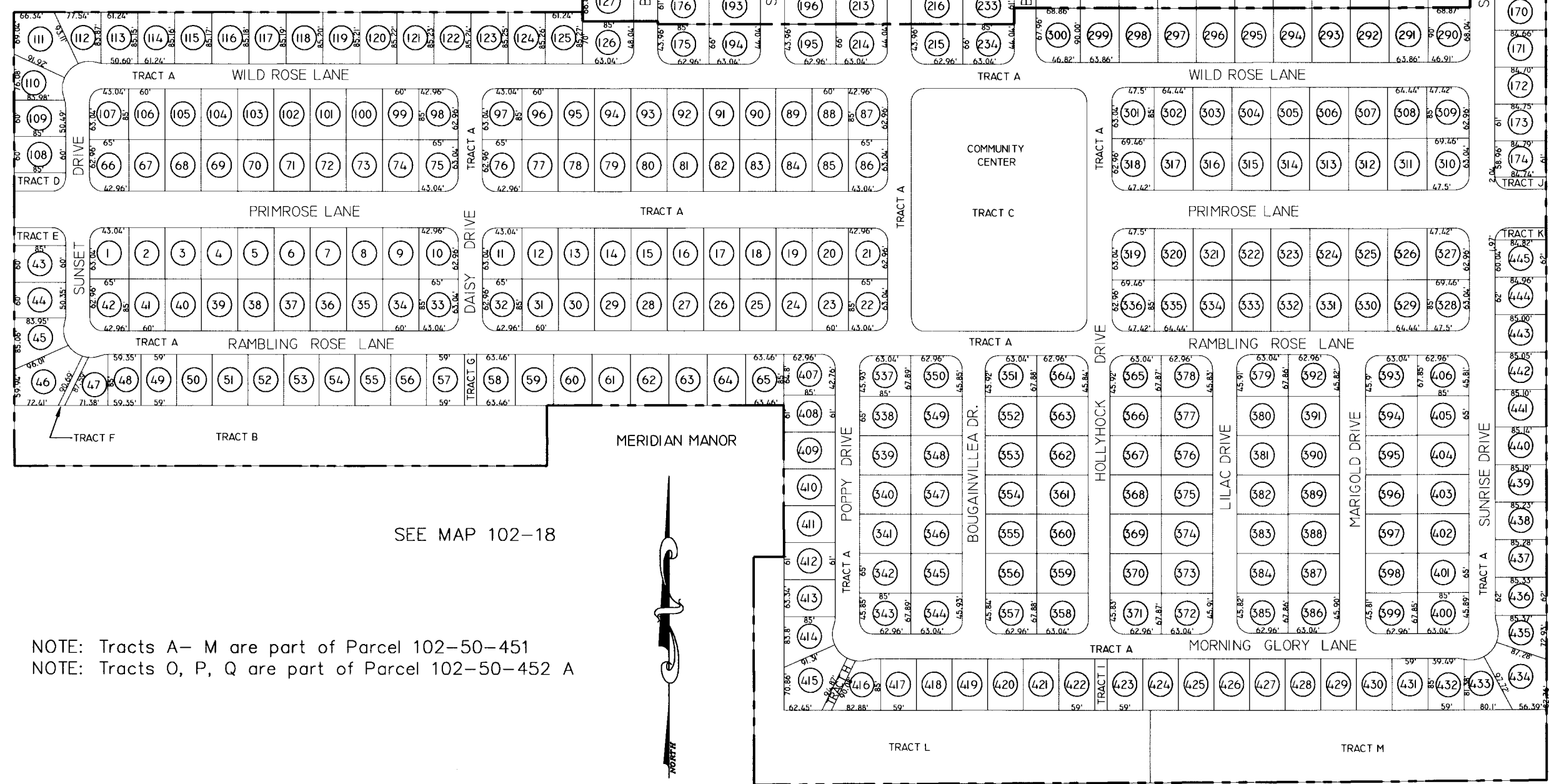
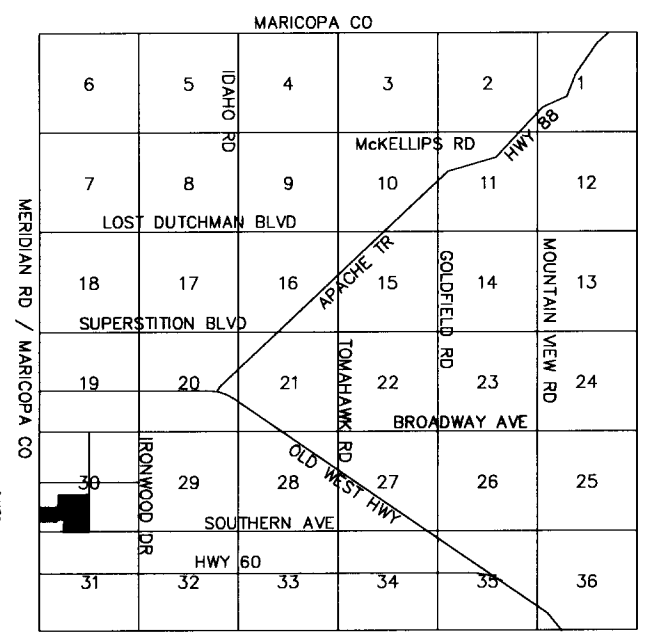
SEE MAP 102-51

SEE MAP 102-57

SCALE: 1" = 200'

06-06-2005

VICINITY MAP



NOTE: Tracts A- M are part of Parcel 102-50-451
NOTE: Tracts O, P, Q are part of Parcel 102-50-452 A

SEE MAP 102-19

PINAL COUNTY ASSESSORS MAP