

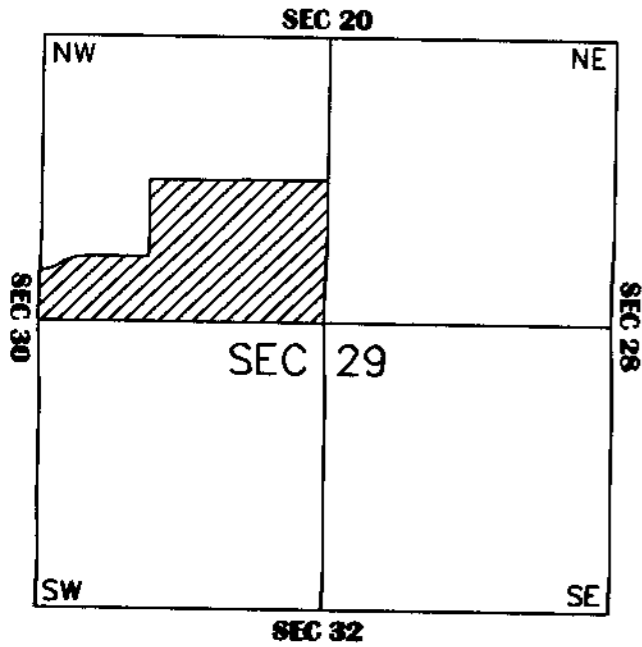
# SEC. 29, PT-S/2, NW, TN.1N RG.8E

# 102-48

## ARROYO VERDE

### CAB."B" - SLD.107

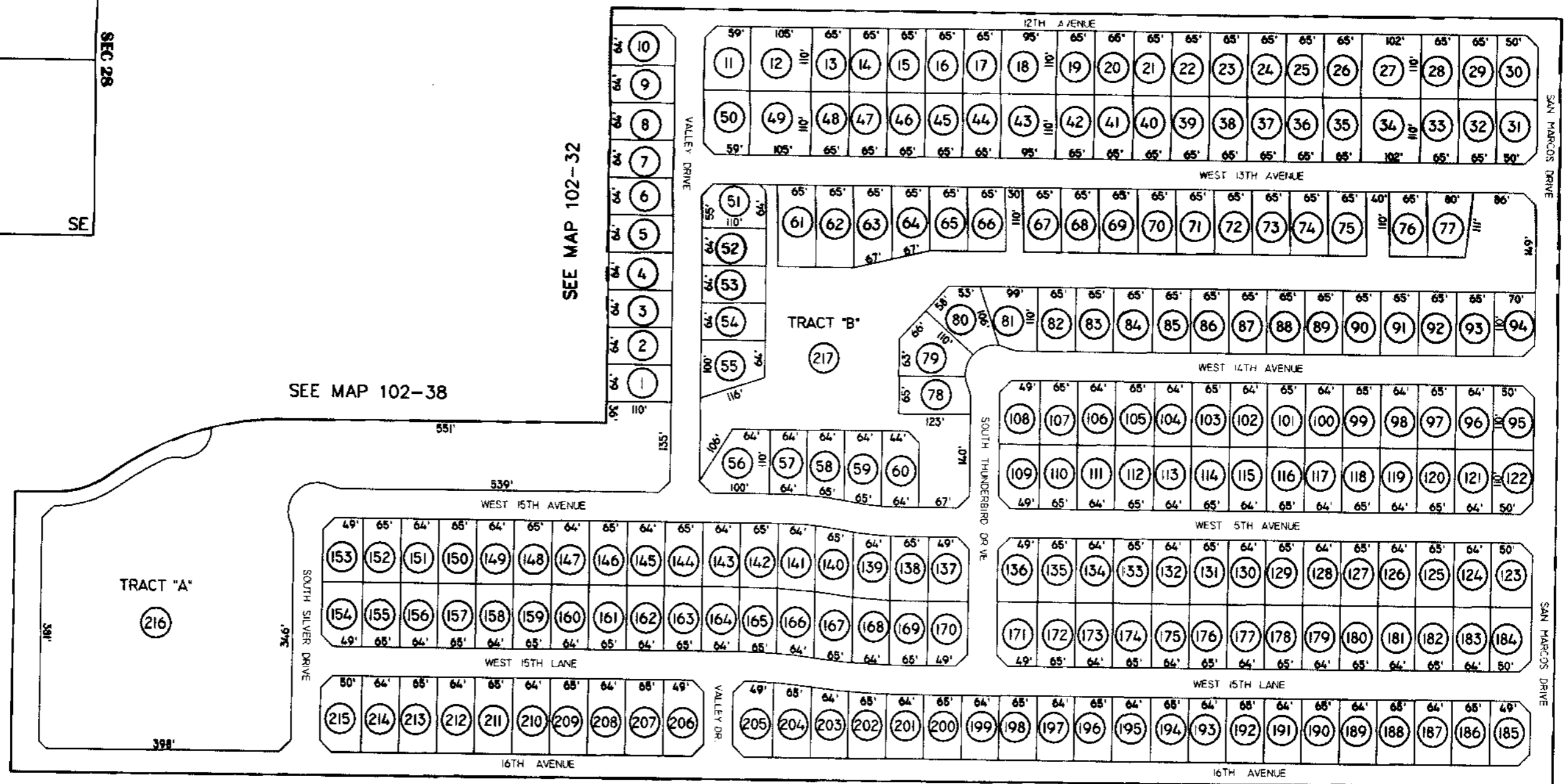
### VICINITY MAP



THE ORIGINAL PLAT OF THIS SUBDIVISION IS ON FILE WITH THE PINAL COUNTY RECORDERS OFFICE, FOR COMPLETE INFORMATION OF PLAT AND C&R'S CALL (620) 666-7100.

THIS MAP IS FOR TAX PURPOSES ONLY. THIS OFFICE WILL NOT ASSUME LIABILITY FOR REPRESENTATION, MEASUREMENTS OR ACREAGE.

SEE MAP 102-38



SEE MAP 102-32

SEE MAP 102-38

SEE MAP 102-32

SEE MAP 102-54

SEE MAP 102-38



SCALE: 1" = 200'

2-27-2001