

SEC. 30, PT-W/2, SE, TN.1N RG.8E

102-51 1/2

RENAISSANCE POINT UNIT 2

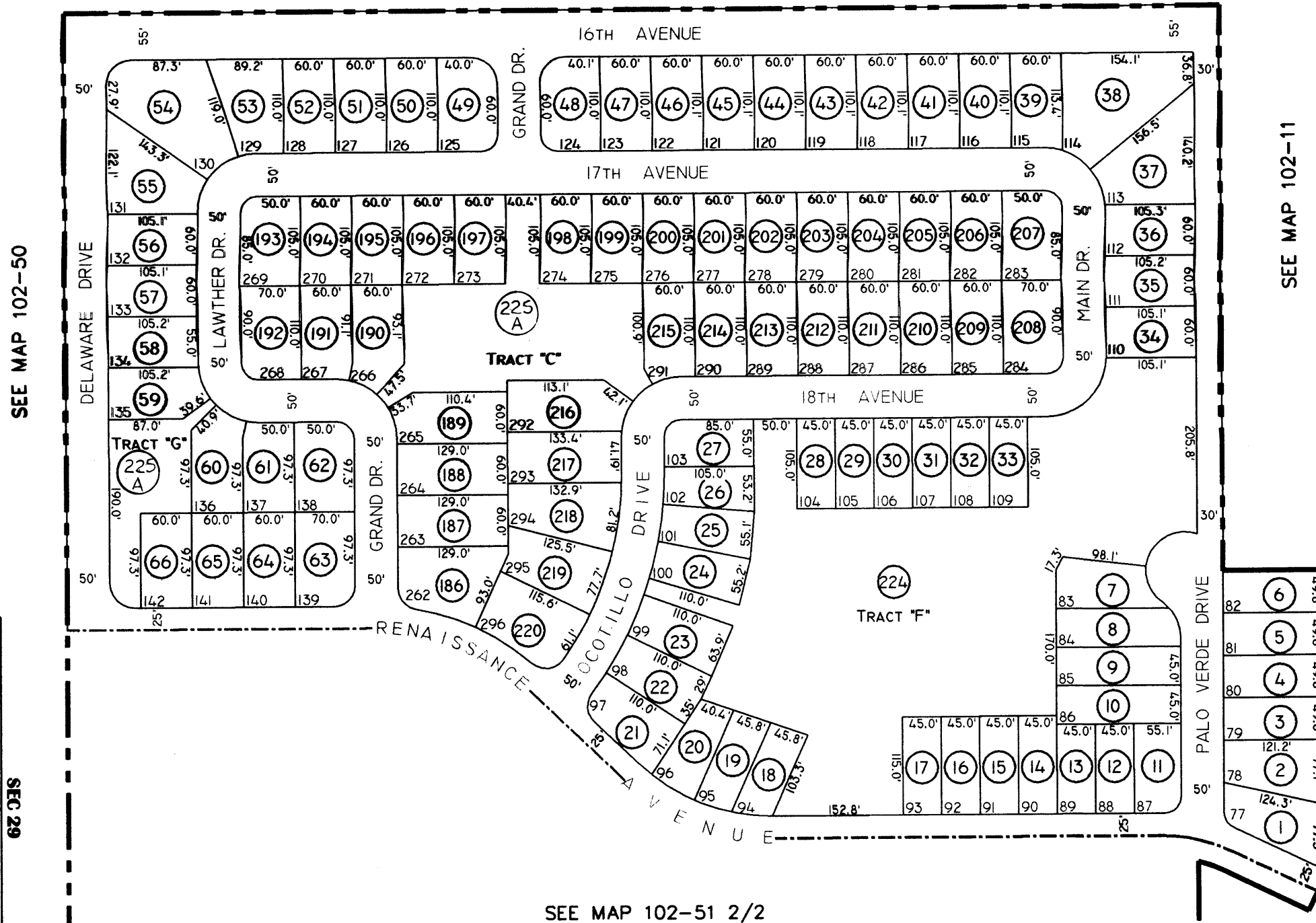
CAB."B" SLD.135

THE ORIGINAL PLAT OF THIS SUBDIVISION IS ON FILE WITH THE PINAL COUNTY RECORDERS OFFICE, FOR COMPLETE INFORMATION OF PLAT AND CC&R's CALL (520) 868-7100.

THIS MAP IS FOR TAX PURPOSES ONLY.

THIS OFFICE WILL NOT ASSUME LIABILITY FOR REPRESENTATION, MEASUREMENTS OR ACREAGE.

SEE MAP 102-13 2/2



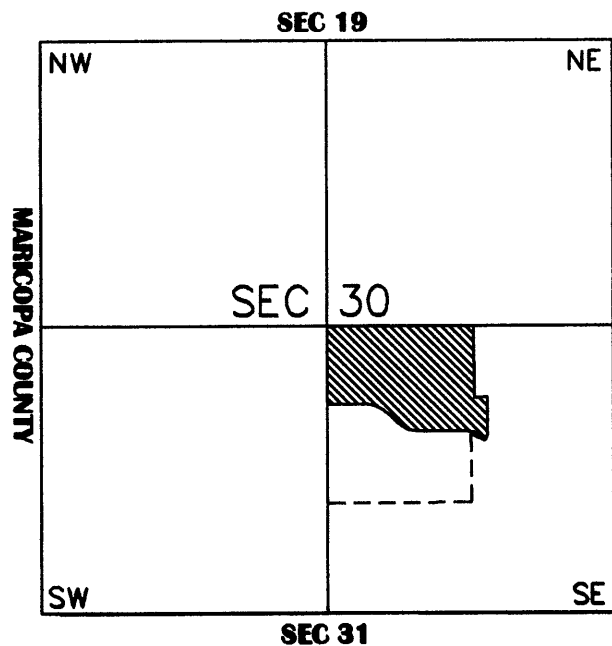
SEE MAP 102-50

SEE MAP 102-11

SEE MAP 102-49

SEE MAP 102-51 2/2

VICINITY MAP



SCALE: 1" = 150'

2-21-2003