

# SEC. 30, PT-W/2, SE, TN.1N RG.8E

# 102-51 2/2

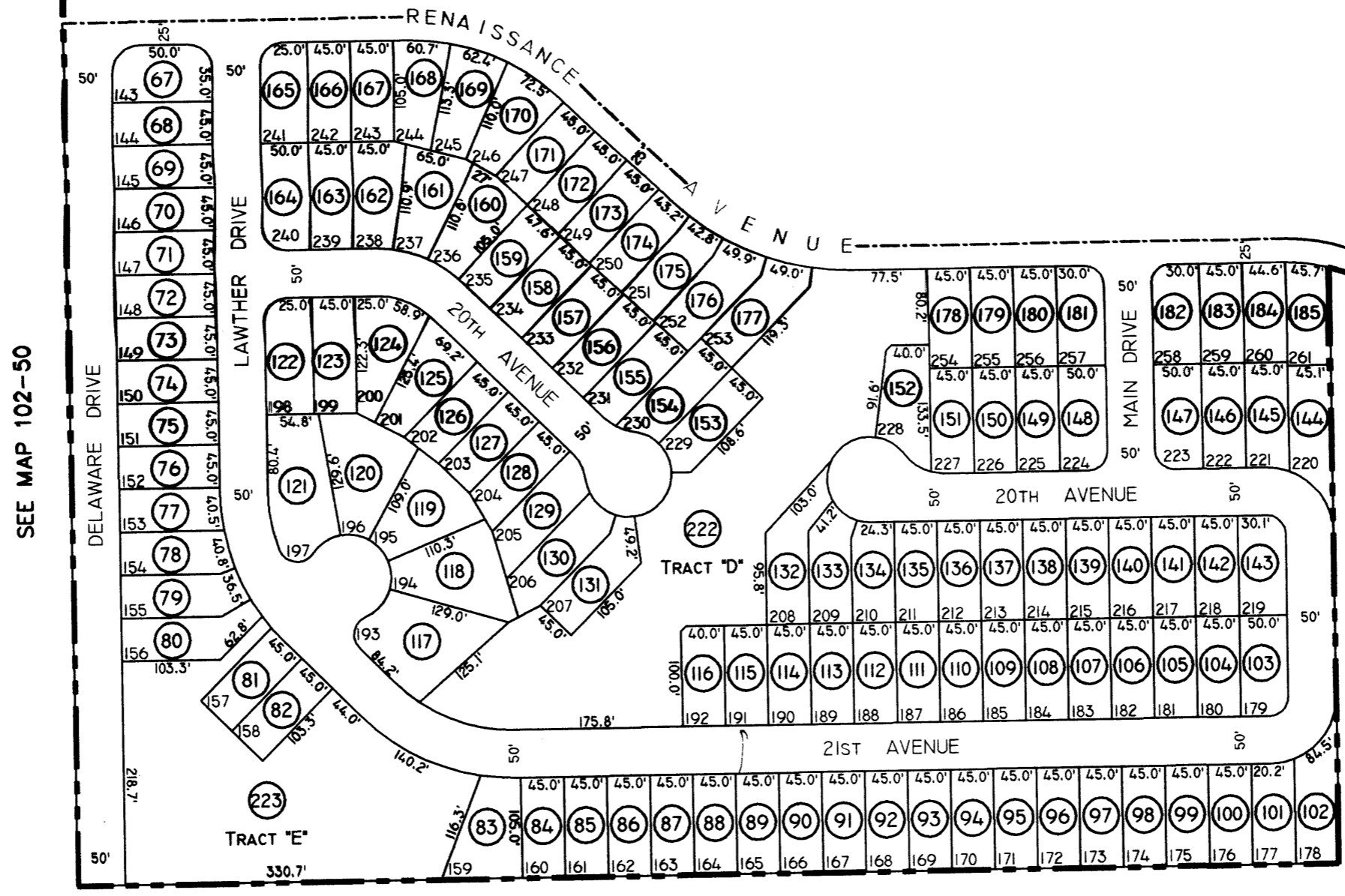
THE ORIGINAL PLAT OF THIS SUBDIVISION IS ON FILE WITH THE PINAL COUNTY RECORDERS OFFICE, FOR COMPLETE INFORMATION OF PLAT AND CC&R'S CALL (520) 868-7100.

THIS MAP IS FOR TAX PURPOSES ONLY.

THIS OFFICE WILL NOT ASSUME LIABILITY FOR REPRESENTATION, MEASUREMENTS OR ACREAGE.

**RENAISSANCE POINT  
UNIT 2  
CAB."B" SLD.135**

SEE MAP 102-51 1/2



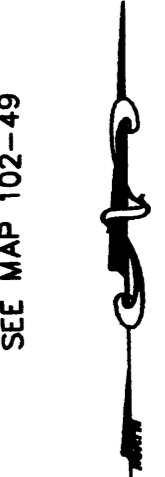
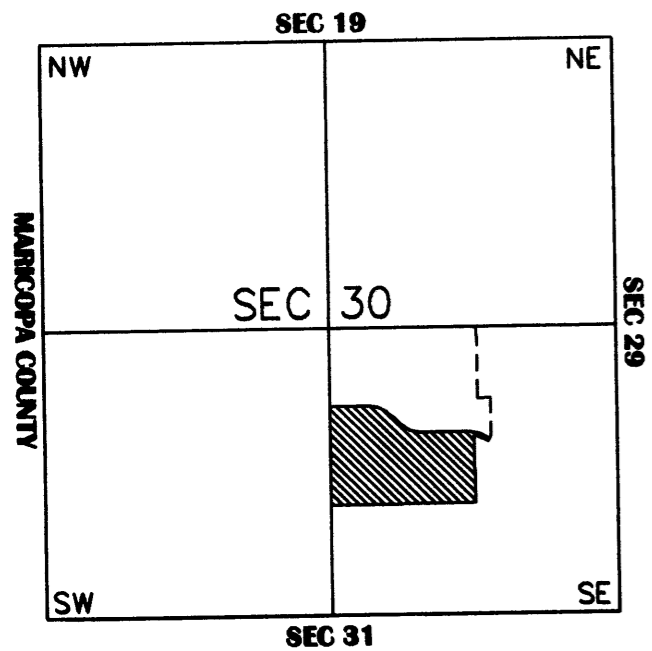
SEE MAP 102-50

SEE MAP 102-49

SEE MAP 102-11

SEE MAP 102-57

## VICINITY MAP



SCALE: 1" = 150'

3-01-2001