

# SEC. 33, PT-E/2, NE, TN.1N RG.8E

# 102-53 2/2

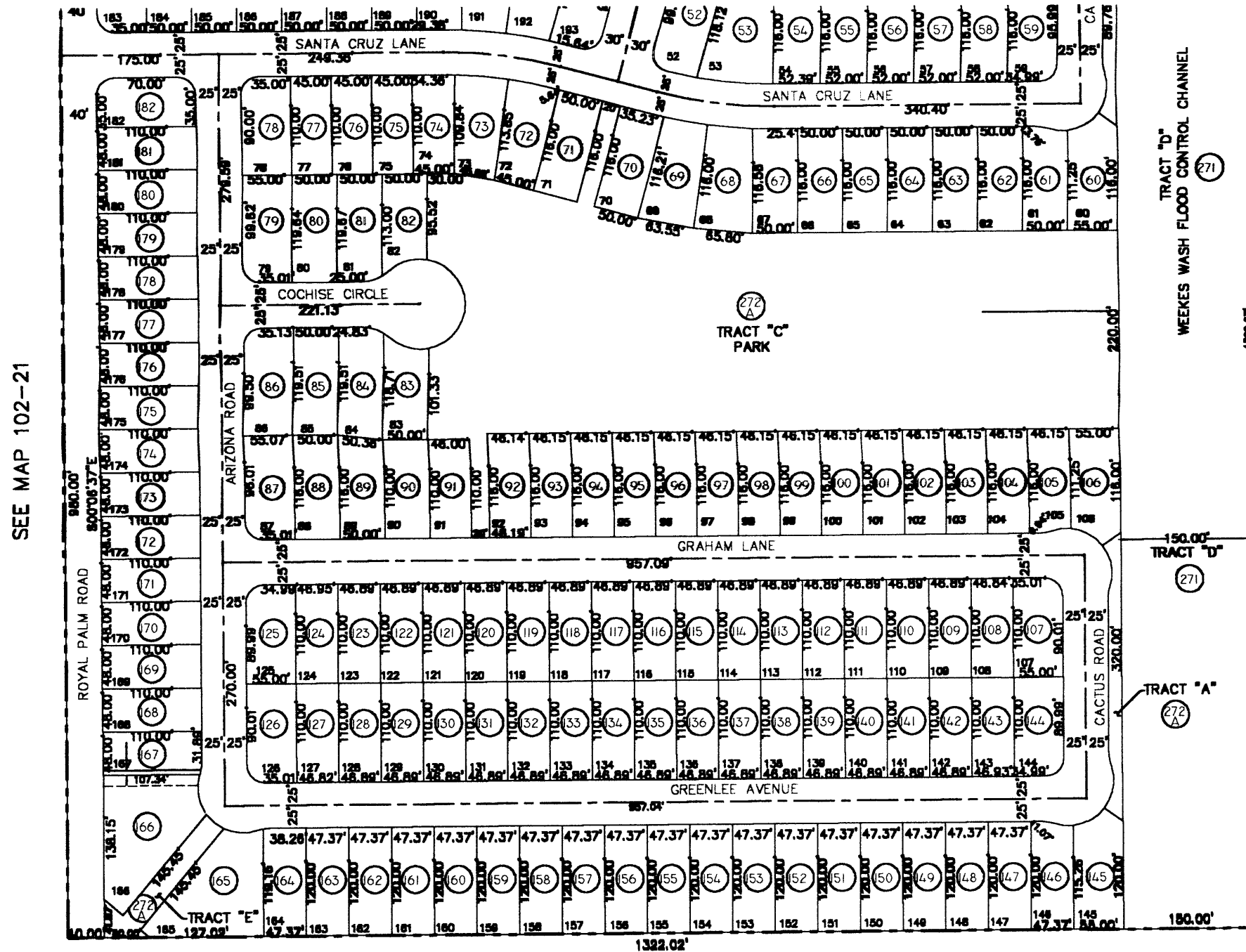
THE ORIGINAL PLAT OF THIS SUBDIVISION IS ON FILE WITH THE PINAL COUNTY RECORDERS OFFICE, FOR COMPLETE INFORMATION OF PLAT AND CC&R'S CALL (520) 868-7100.

THIS MAP IS FOR TAX PURPOSES ONLY.

THIS OFFICE WILL NOT ASSUME LIABILITY FOR REPRESENTATION, MEASUREMENTS OR ACREAGE.

CIMMARRON  
CAB."C" SLD.06

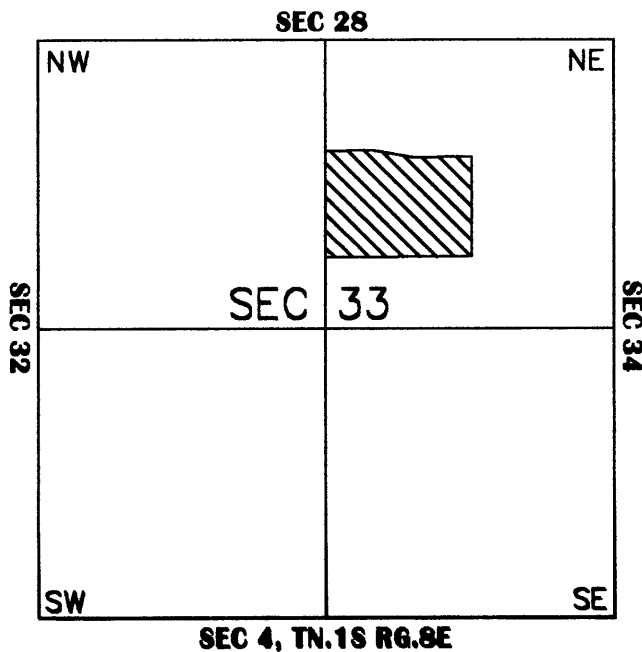
SEE MAP 102-53 1/2



SEE MAP 102-21

SEE MAP 102-27 2/2

## VICINITY MAP



SEE MAP 102-20



SCALE: 1" = 150'

11-16-2001